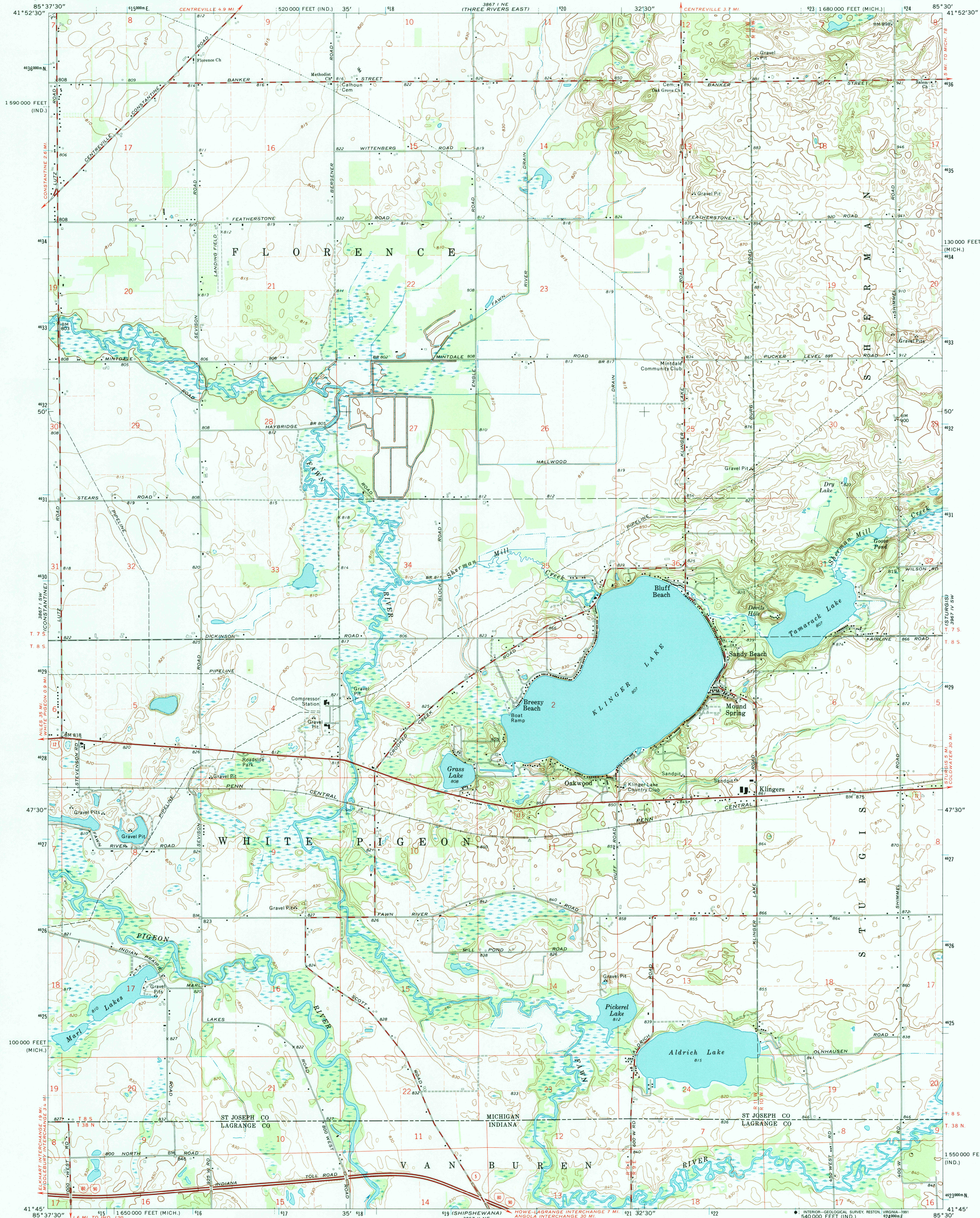


UNITED STATES
DEPARTMENT OF THE INTERIOR
GEOLOGICAL SURVEY

KLINGER LAKE QUADRANGLE
MICHIGAN-INDIANA
7.5 MINUTE SERIES (TOPOGRAPHIC)
SE 1/4 THREE RIVERS 15' QUADRANGLE



Mapped, edited, and published by the Geological Survey

Control by USGS and USC&GS

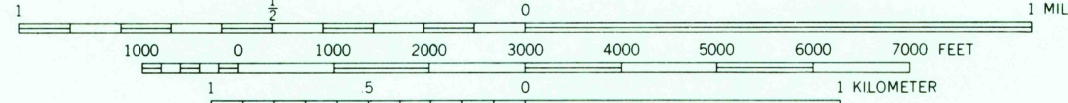
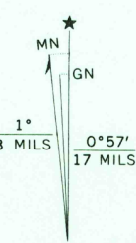
Topography by photogrammetric methods from aerial photographs taken 1969. Field checked 1972

Polycyclic projection, 1927 North American datum 10,000-foot grids based on Michigan coordinate system, south zone and Indiana coordinate system, east zone 1000-meter Universal Transverse Mercator grid ticks, zone 16, shown in blue

Fine red dashed lines indicate selected fence and field lines where generally visible on aerial photographs. This information is unchecked

Map photoinspected 1979

No major culture or drainage changes observed



CONTOUR INTERVAL 10 FEET
DOTTED LINES REPRESENT 5-FOOT CONTOURS
DATUM IS MEAN SEA LEVEL

THIS MAP COMPLIES WITH NATIONAL MAP ACCURACY STANDARDS
FOR SALE BY U.S. GEOLOGICAL SURVEY, DENVER, COLORADO 80225, OR RESTON, VIRGINIA 22092
MICHIGAN DEPARTMENT OF NATURAL RESOURCES, LANSING, MICHIGAN 48909
AND INDIANA DEPARTMENT OF NATURAL RESOURCES, INDIANAPOLIS, INDIANA 46204
A FOLDER DESCRIBING TOPOGRAPHIC MAPS AND SYMBOLS IS AVAILABLE ON REQUEST

ROAD CLASSIFICATION
Primary highway, hard surface
Secondary highway, hard surface
Light-duty road, hard or improved surface
Unimproved road
Interstate Route
U. S. Route
State Route



KLINGER LAKE, MICH.-IND.
SE 1/4 THREE RIVERS 15' QUADRANGLE
N4145-W8530/7.5

1972
PHOTOINSPECTED 1979
AMS 3867 I SE-SERIES Y862

