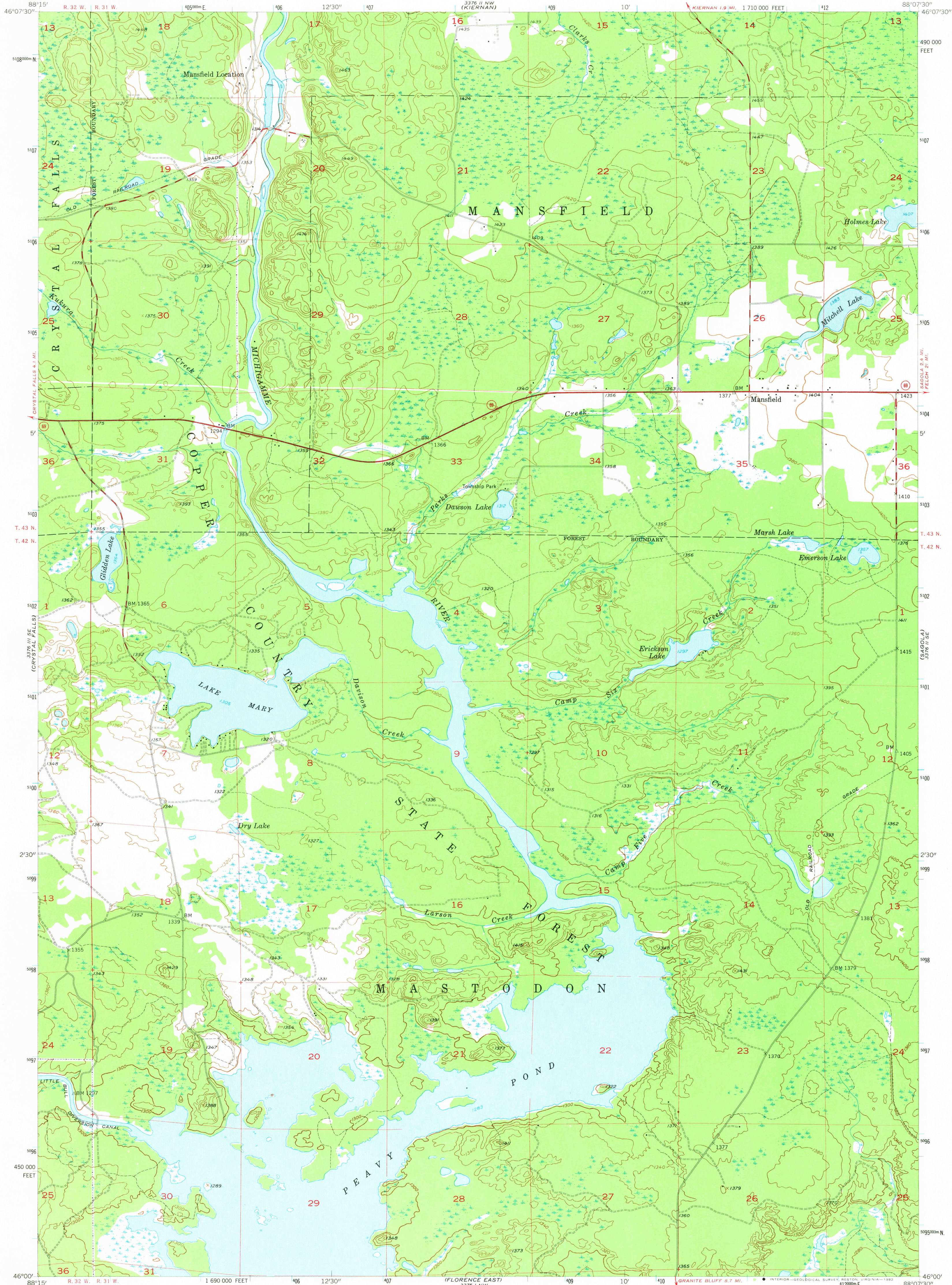


UNITED STATES
DEPARTMENT OF THE INTERIOR
GEOLOGICAL SURVEY

LAKE MARY QUADRANGLE
MICHIGAN—IRON CO.
7.5 MINUTE SERIES (TOPOGRAPHIC)
SW/4 SAGOLA 15' QUADRANGLE



Mapped, edited, and published by the Geological Survey
Control by USGS and USC&GS

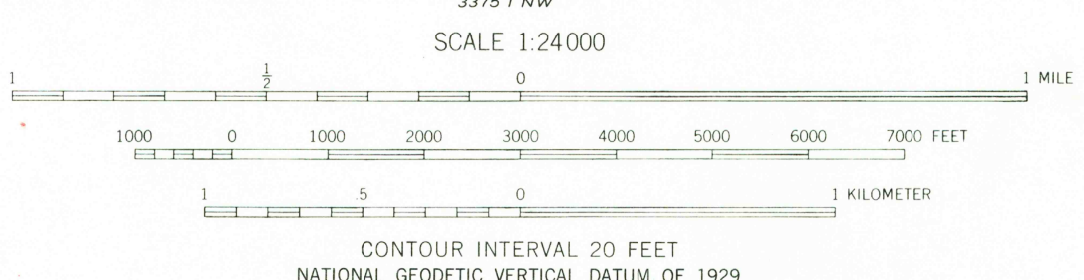
Topography by multiplex methods from aerial photographs
taken 1944. Field check 1945. Culture revised from
aerial photographs taken 1955. Field check 1956

Polyconic projection. 1927 North American datum
10,000-foot grid based on Michigan coordinate system, north zone
1000-meter Universal Transverse Mercator grid ticks,
zone 16, shown in blue

To place on the predicted North American Datum 1983
move the projection lines 8 meters north and
9 meters east as shown by dashed corner ticks

There may be private inholdings within the boundaries
of the National or State reservations shown on this map

Map photoinspected 1975
No major culture or drainage changes observed



THIS MAP COMPLIES WITH NATIONAL MAP ACCURACY STANDARDS
FOR SALE BY U.S. GEOLOGICAL SURVEY, RESTON, VIRGINIA 22092
AND BY THE GEOLOGICAL SURVEY DIVISION
MICHIGAN DEPARTMENT OF NATURAL RESOURCES, LANSING, MICHIGAN 48909
A FOLDER DESCRIBING TOPOGRAPHIC MAPS AND SYMBOLS IS AVAILABLE ON REQUEST

ROAD CLASSIFICATION
Heavy-duty —————
Medium-duty —————
Light-duty —————
Unimproved dirt —————
State Route



LAKE MARY, MICH.
SW/4 SAGOLA 15' QUADRANGLE
N 4600—W 8807.5/7.5

1956
PHOTOINSPECTED 1975
AMS 3376 II SW—SERIES V862

APR 27 1982
2000