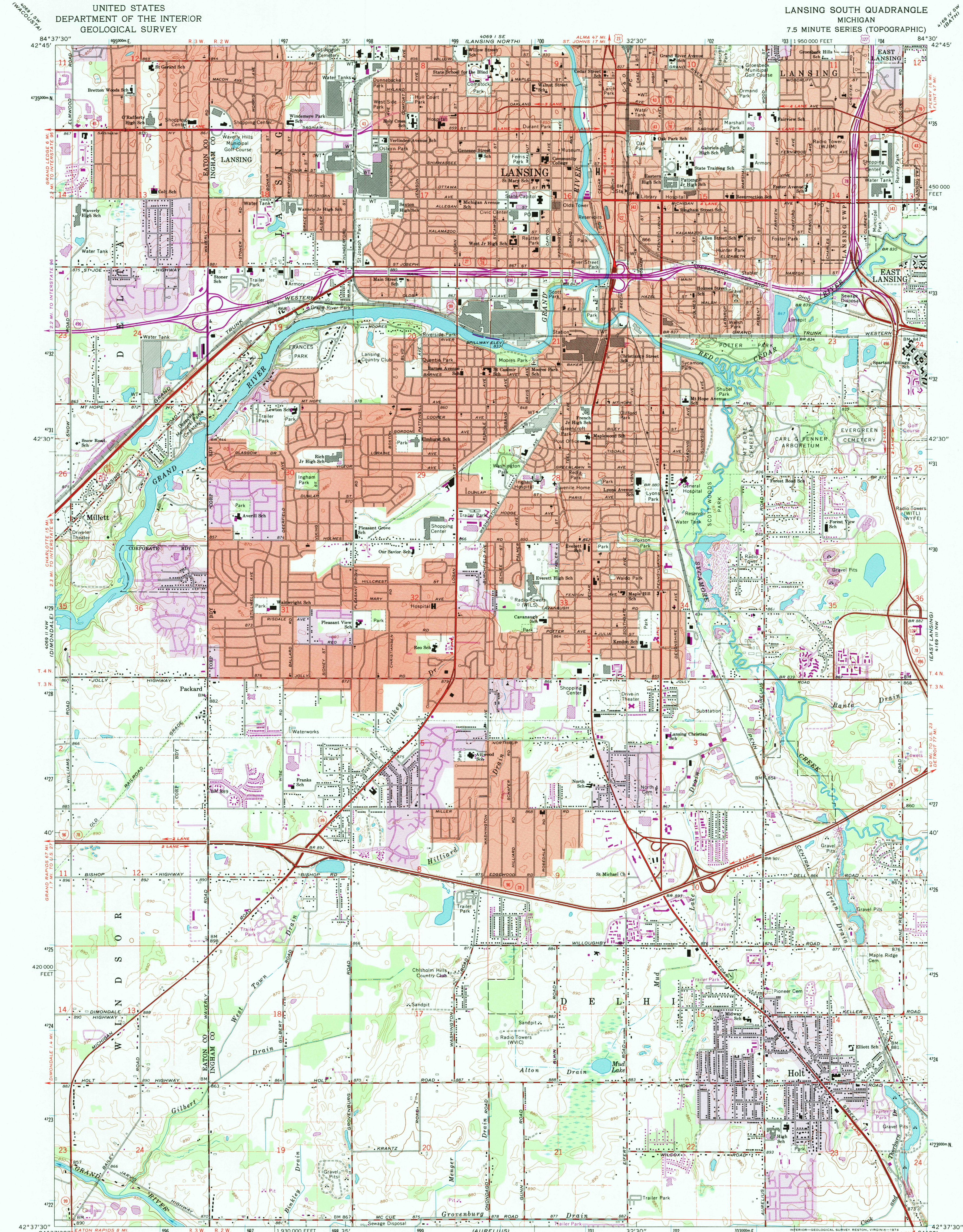


UNITED STATES
DEPARTMENT OF THE INTERIOR
GEOLOGICAL SURVEY

LANSING SOUTH QUADRANGLE
MICHIGAN
7.5 MINUTE SERIES (TOPOGRAPHIC)



Mapped, edited, and published by the Geological Survey
Control by USGS and USC&GS

Topography by photogrammetric methods from aerial
photographs taken 1964. Field checked 1965

Polycyclic projection. 1927 North American datum
10,000-foot grid based on Michigan coordinate system, south zone
1000-meter Universal Transverse Mercator grid ticks,
zone 16, shown in blue

Red tint indicates areas in which only landmark buildings are shown

Fine red dashed lines indicate selected fence and field lines where
generally visible on aerial photographs. This information is unchecked

Revisions shown in purple compiled from aerial photographs
taken 1973. This information not field checked

Purple tint indicates extension of urban areas

SCALE 1:24,000

1 000 0 1000 2000 3000 4000 5000 6000 7000 FEET

1 5 10 20 30 40 50 60 70 80 90 100 METERS

CONTOUR INTERVAL 10 FEET
DATUM IS MEAN SEA LEVEL

UTM GRID AND 1973 MAGNETIC NORTH
DECLINATION AT CENTER OF SHEET

QUADRANGLE LOCATION

ROAD CLASSIFICATION
Heavy-duty ——— Light-duty ———
Medium-duty ——— Unimproved dirt ———
Interstate Route U.S. Route State Route

LANSING SOUTH, MICH.
N4237.5—W8430.7/5

1965
PHOTOREVISED 1973
AMS 4069 II NE—SERIES W862

THIS MAP COMPLIES WITH NATIONAL MAP ACCURACY STANDARDS
FOR SALE BY U.S. GEOLOGICAL SURVEY, DENVER, COLORADO 80225, OR RESTON, VIRGINIA 22092
AND GEOLOGICAL SURVEY DIVISION
MICHIGAN DEPARTMENT OF NATURAL RESOURCES, LANSING, MICHIGAN 48909
A FOLDER DESCRIBING TOPOGRAPHIC MAPS AND SYMBOLS IS AVAILABLE ON REQUEST

USGS FMD HISTORICAL
MAP ARCHIVES
MAY 18 1995
REC'D FILE COPY