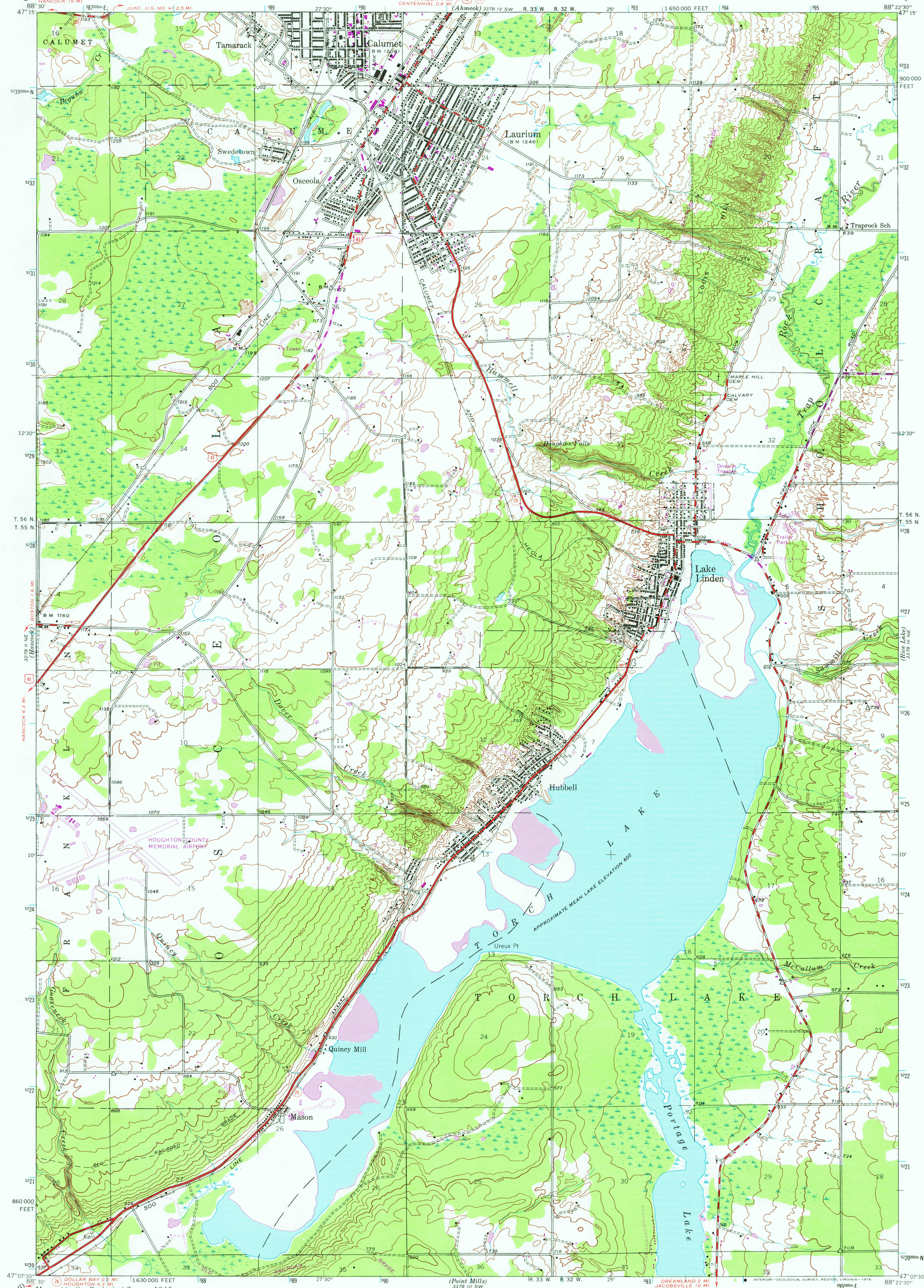


UNITED STATES
DEPARTMENT OF THE INTERIOR
GEOLOGICAL SURVEY

MICHIGAN
(HOUGHTON COUNTY)
LAURIUM QUADRANGLE
7½-MINUTE SERIES



Map of the Laurium, Michigan, 1946
Polyconic projection. 1927 North American datum
10,000-foot grid based on Michigan coordinate system,
north zone.
1000-metre Universal Transverse Mercator grid ticks,
zone 16, shown in blue.
Revisions shown in purple compiled from aerial photographs
taken 1975. This information not field checked.

SCALE 1:24,000
CONTOUR INTERVAL 20 FEET
NATIONAL GEODETIC VERTICAL DATUM OF 1929

ROAD CLASSIFICATION
Heavy-duty ——— Light-duty ———
Medium-duty ——— Unimproved dirt ———
U. S. Route ——— State Route ———

QUADRANGLE LOCATION
MICHIGAN
LAURIUM, MICH.
N4707.5—W8822.5/7.5
1946
USGS
Historical File
Topographic Division
PHOTOREVISED 1975
AMS 3378 III NW—SERIES V862

NOV 15 1976