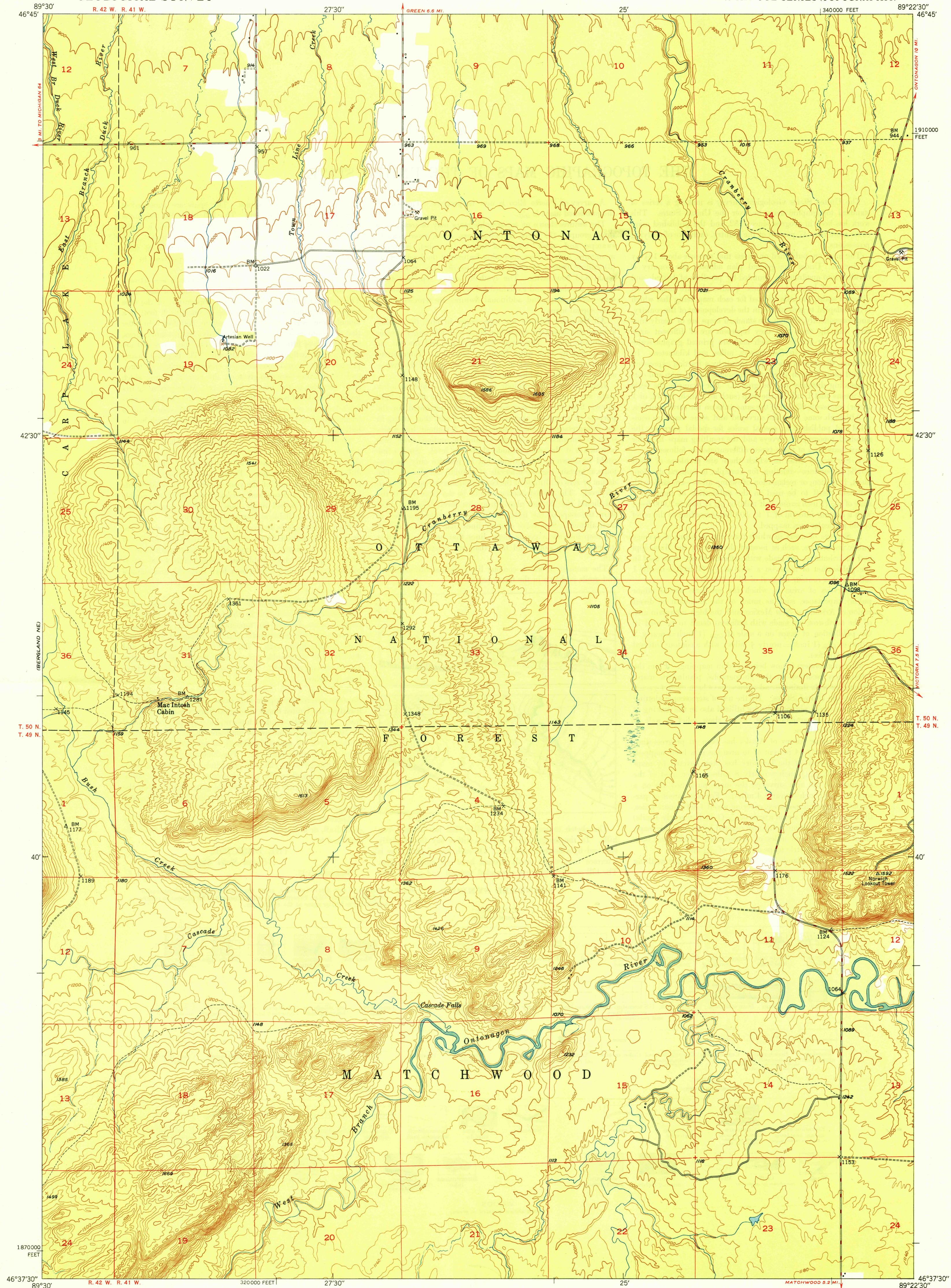


UNITED STATES
DEPARTMENT OF THE INTERIOR
GEOLOGICAL SURVEY

MATCHWOOD NW QUADRANGLE
MICHIGAN-ONTONAGON CO.
7.5 MINUTE SERIES (TOPOGRAPHIC)



U.S.G.S.
FILE COPY
Inspection and Editing

U.S.G.S.
FILE COPY
Inspection and Editing

Matchwood NW, MICH.
N4637.5-W8922.5/7.5
EDITION OF 1949

Maped, edited, and published by the Geological Survey
Control by USGS and USC&GS
Topography from aerial photographs by multiplex methods
Aerial photographs taken 1946. Field check 1948
Polyconic projection. 1927 North American datum
10,000-foot grid based on Michigan coordinate system,
west zone

ROAD CLASSIFICATION
HARD-SURFACE ALL WEATHER ROADS
Heavy-duty...
Medium-duty...
Loose-surface, graded, or narrow hard-surface...
U. S. Route
State Route
DRY WEATHER ROADS
Improved dirt...
Unimproved dirt...
USGS
Historical File
Topographic Division