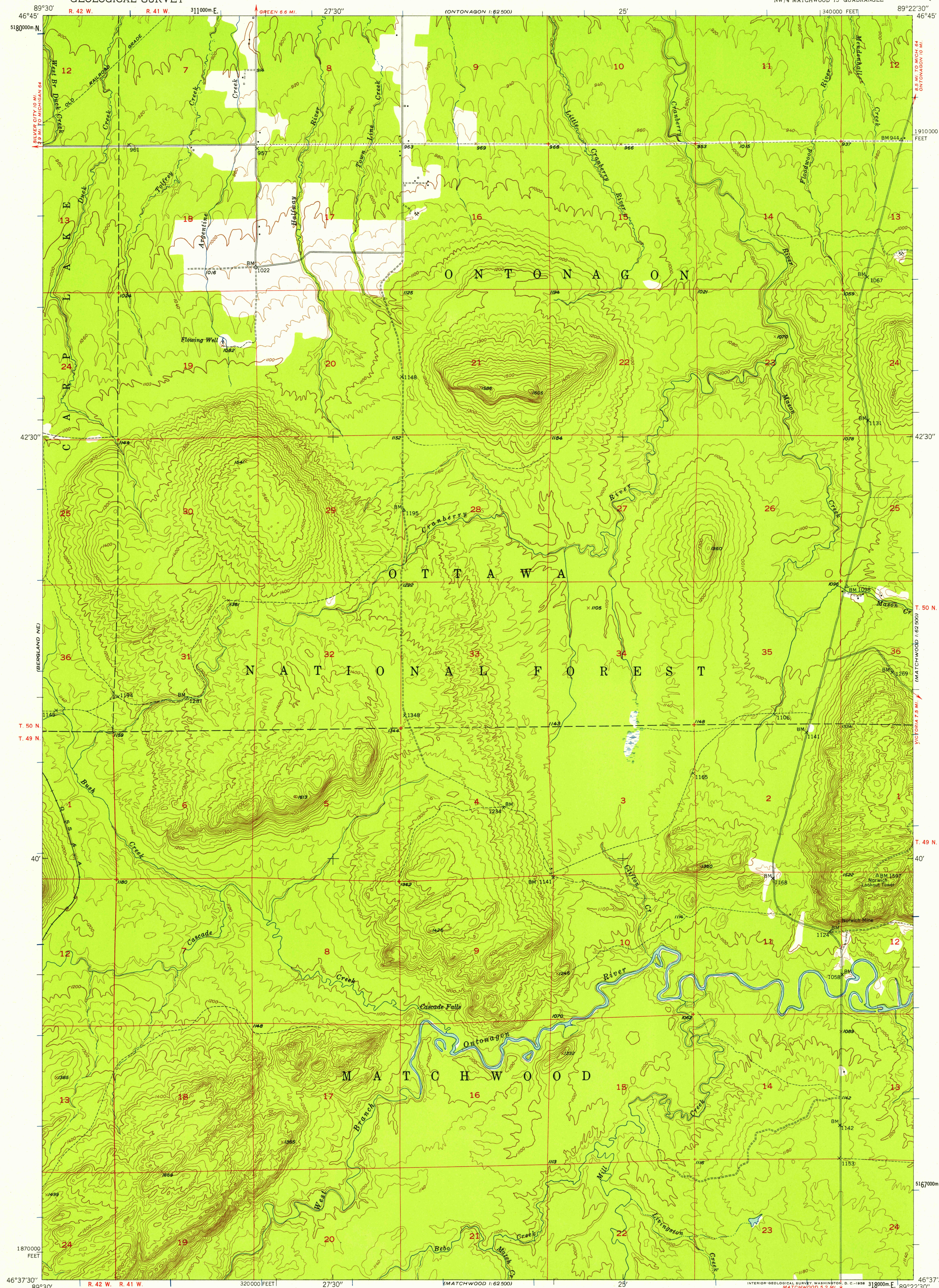


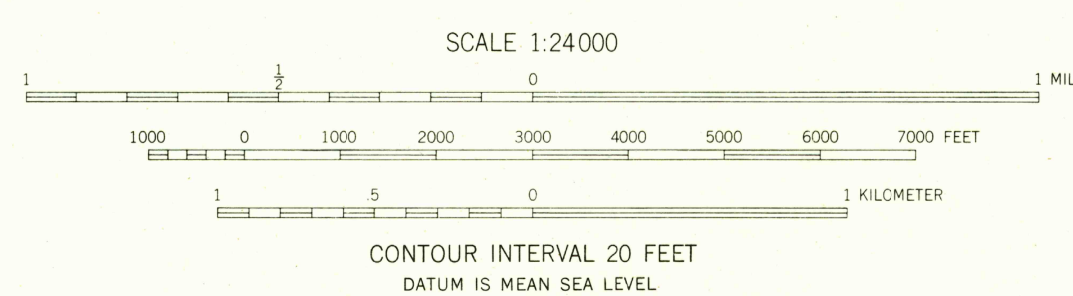
UNITED STATES
DEPARTMENT OF THE INTERIOR
GEOLOGICAL SURVEY

MATCHWOOD NW QUADRANGLE
MICHIGAN—ONTONAGON CO.
7.5 MINUTE SERIES (TOPOGRAPHIC)
NW 1/4 MATCHWOOD 15' QUADRANGLE



Maped, edited, and published by the Geological Survey
Control by USGS and USC&GS
Topography from aerial photographs by multiplex methods
Aerial photographs taken 1946. Field check 1948
Revised 1956
Polyconic projection. 1927 North American datum
10,000-foot grid based on Michigan coordinate system, west zone
1000-meter Universal Transverse Mercator grid ticks,
zone 16, shown in blue

TRUE NORTH
MAGNETIC NORTH
APPROXIMATE MEAN
DECLINATION, 1956



ROAD CLASSIFICATION
Light-duty ————— Unimproved dirt =

MATCHWOOD NW, MICH.
NW 1/4 MATCHWOOD 15' QUADRANGLE
N4637.5—W8922.5/7.5

1956

THIS MAP COMPLIES WITH NATIONAL MAP ACCURACY STANDARDS
FOR SALE BY U. S. GEOLOGICAL SURVEY, WASHINGTON 25, D. C.
A FOLDER DESCRIBING TOPOGRAPHIC MAPS AND SYMBOLS IS AVAILABLE ON REQUEST

USGS
Historical File
Topographic Division

U.S.G.S.
FILE COPY
TOPOGRAPHIC DIVISION

MAR 26 1958
1915