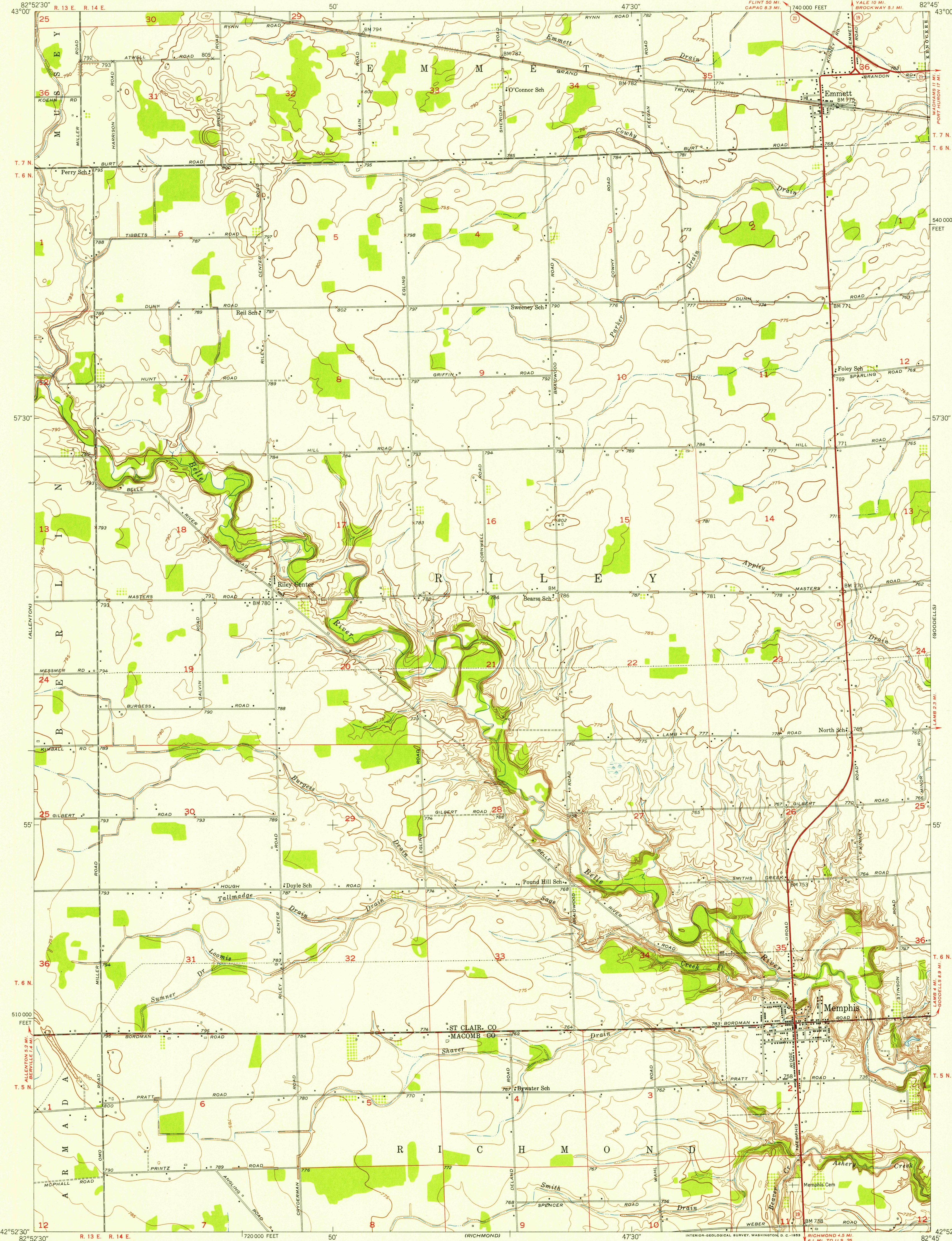


UNITED STATES  
DEPARTMENT OF THE INTERIOR  
GEOLOGICAL SURVEY

MEMPHIS QUADRANGLE  
MICHIGAN  
7.5 MINUTE SERIES (TOPOGRAPHIC)

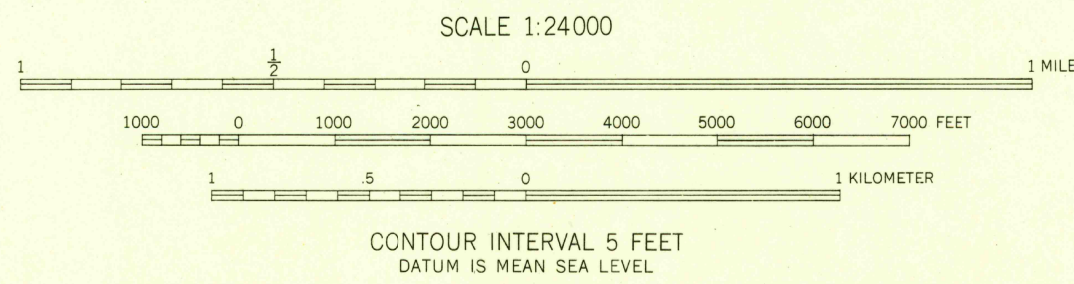


FILE COPY  
Inspection and Editing

FILE COPY  
Inspection and Editing

Maped, edited, and published by the Geological Survey  
Control by USGS and USC&GS  
Culture and drainage in part compiled from aerial photographs  
Topography by plane-table surveys 1943. Culture revised 1952  
Polyconic projection. 1927 North American datum  
10,000-foot grid based on Michigan coordinate system,  
east zone

TRUE NORTH  
MAGNETIC NORTH  
APPROXIMATE MEAN  
DECLINATION, 1952



USGS  
Historical File  
Topographic Division

ROAD CLASSIFICATION  
Heavy-duty 4 LANE 6 LANE Light-duty  
Medium-duty 4 LANE 6 LANE Unimproved dirt  
U. S. Route State Route

MEMPHIS, MICH.  
N4252.5-W8245.75

1952

THIS MAP COMPLIES WITH NATIONAL MAP ACCURACY STANDARDS  
FOR SALE BY U. S. GEOLOGICAL SURVEY, WASHINGTON 25, D. C.  
A FOLDER DESCRIBING TOPOGRAPHIC MAPS AND SYMBOLS IS AVAILABLE ON REQUEST

JAN 5 1954

2085