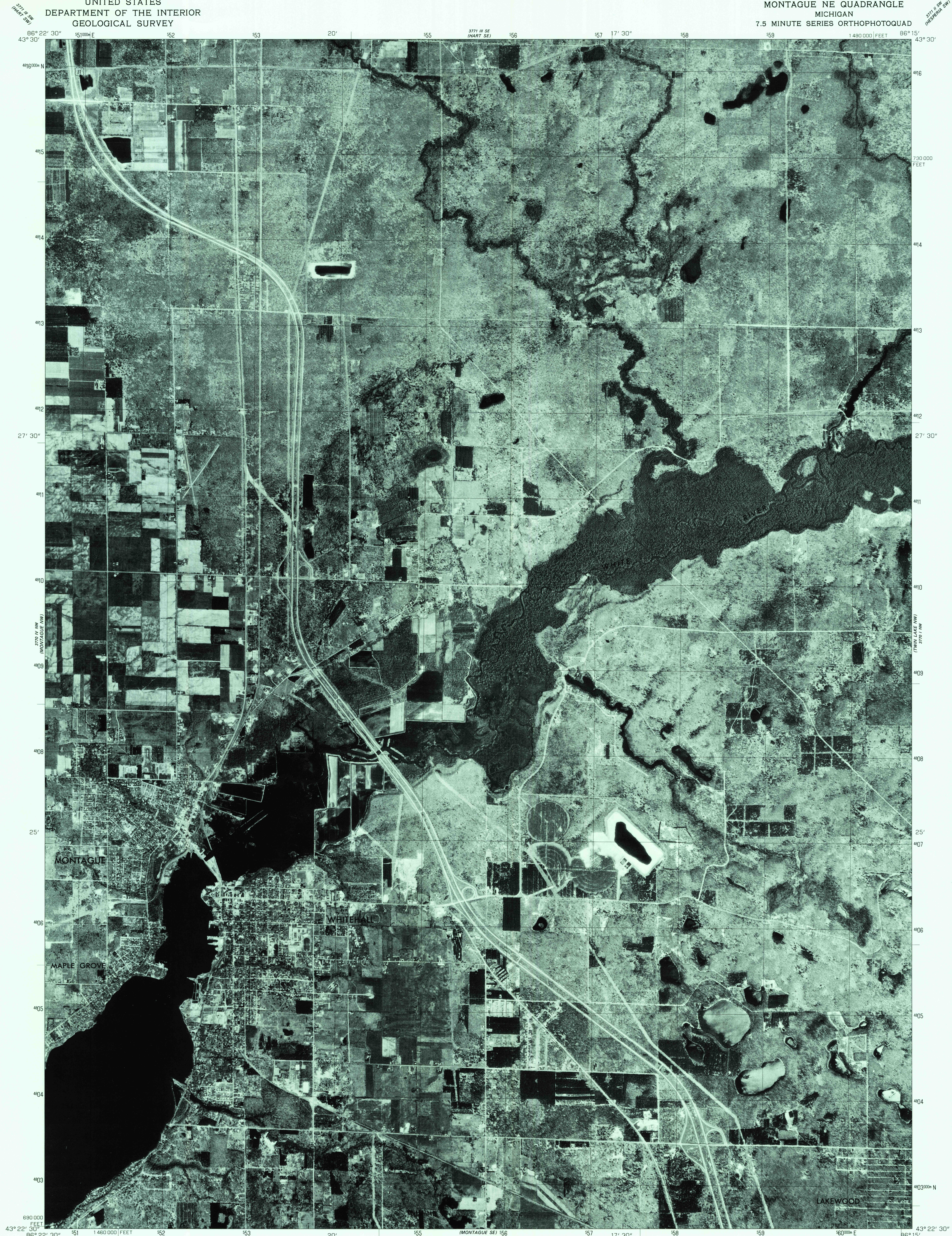
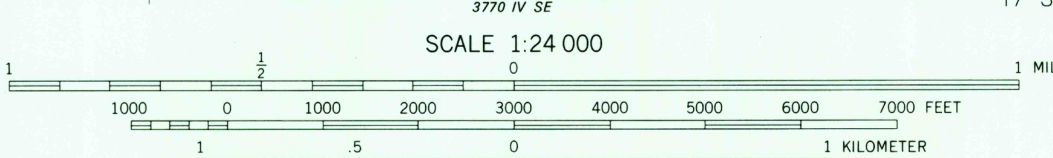
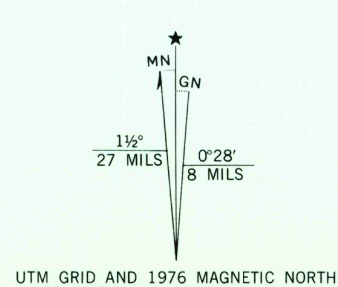


UNITED STATES  
DEPARTMENT OF THE INTERIOR  
GEOLOGICAL SURVEY

MONTAGUE NE QUADRANGLE  
MICHIGAN  
7.5 MINUTE SERIES ORTHOPHOTOQUAD



Produced and published by the Geological Survey  
Orthophotograph prepared from 1:80,000-scale  
aerial photograph taken May 8, 1976  
Projection and 10,000-foot grid ticks. Michigan  
coordinate system, south zone (Lambert conformal conic)  
1000-meter Universal Transverse Mercator grid,  
zone 16. 1927 North American datum  
Photomagey rectified by optical scanning  
which may produce double or mismatched images;  
use the mean of image positions for map point



THIS MAP COMPLIES WITH NATIONAL MAP ACCURACY STANDARDS  
FOR SALE BY U. S. GEOLOGICAL SURVEY, RESTON, VIRGINIA 22092



PRINCIPAL NUMBERED HIGHWAYS  
Interstate Route U. S. Route State Route

This quadrangle area also covered by NE/4  
of Montague 1:62 500-scale topographic map

USGS  
Historical File MONTAGUE NE, MICH.  
Topographic Division N4322.5-W8615/7.5  
1976

AMS 3770 IV NE-SERIES V062

JUN 26 1979

1000