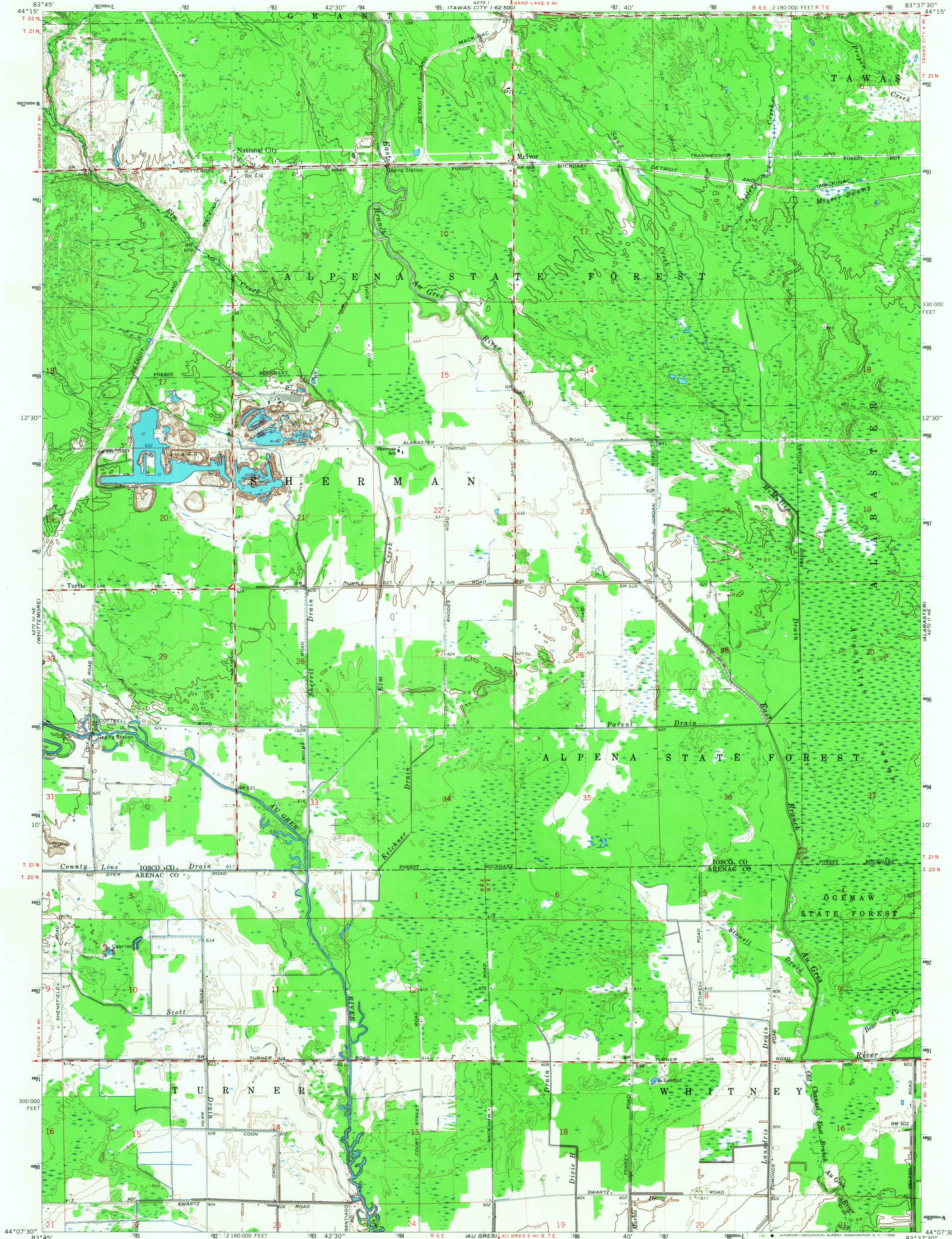
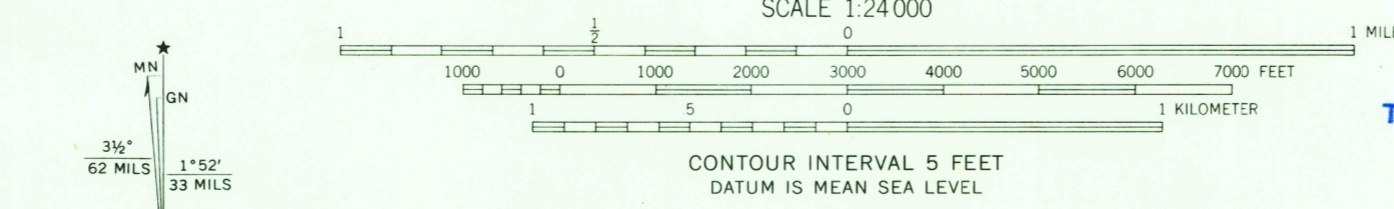


4272 I  
TAWAS CITY 1:62,500



Maped, edited, and published by the Geological Survey in cooperation with State of Michigan agencies in cooperation with USGS and USC&GS  
Topography by photogrammetric methods from aerial photographs taken 1965. Field checked 1966  
Polyconic projection. 1927 North American datum 10,000-foot grid based on Michigan coordinate system, central zone 1000-meter Universal Transverse Mercator grid ticks, zone 17, shown in blue  
Fine red dashed lines indicate selected fence and field lines where generally visible on aerial photographs. This information is unchecked



USGS  
Historical File  
Topographic Division

ROAD CLASSIFICATION  
Medium-duty — Light-duty  
Unimproved dirt —

THIS MAP COMPLIES WITH NATIONAL MAP ACCURACY STANDARDS FOR SALE BY U.S. GEOLOGICAL SURVEY, WASHINGTON, D. C. 20242 A FOLDER DESCRIBING TOPOGRAPHIC MAPS AND SYMBOLS IS AVAILABLE ON REQUEST

USGS.  
FILE COPY  
TOPOGRAPHIC DIVISION

NATIONAL CITY, MICH.  
N4407.5-W8337.5/7.5  
1966  
AMS 4272 II NW-SERIES V862

2910  
JUN 7 1968