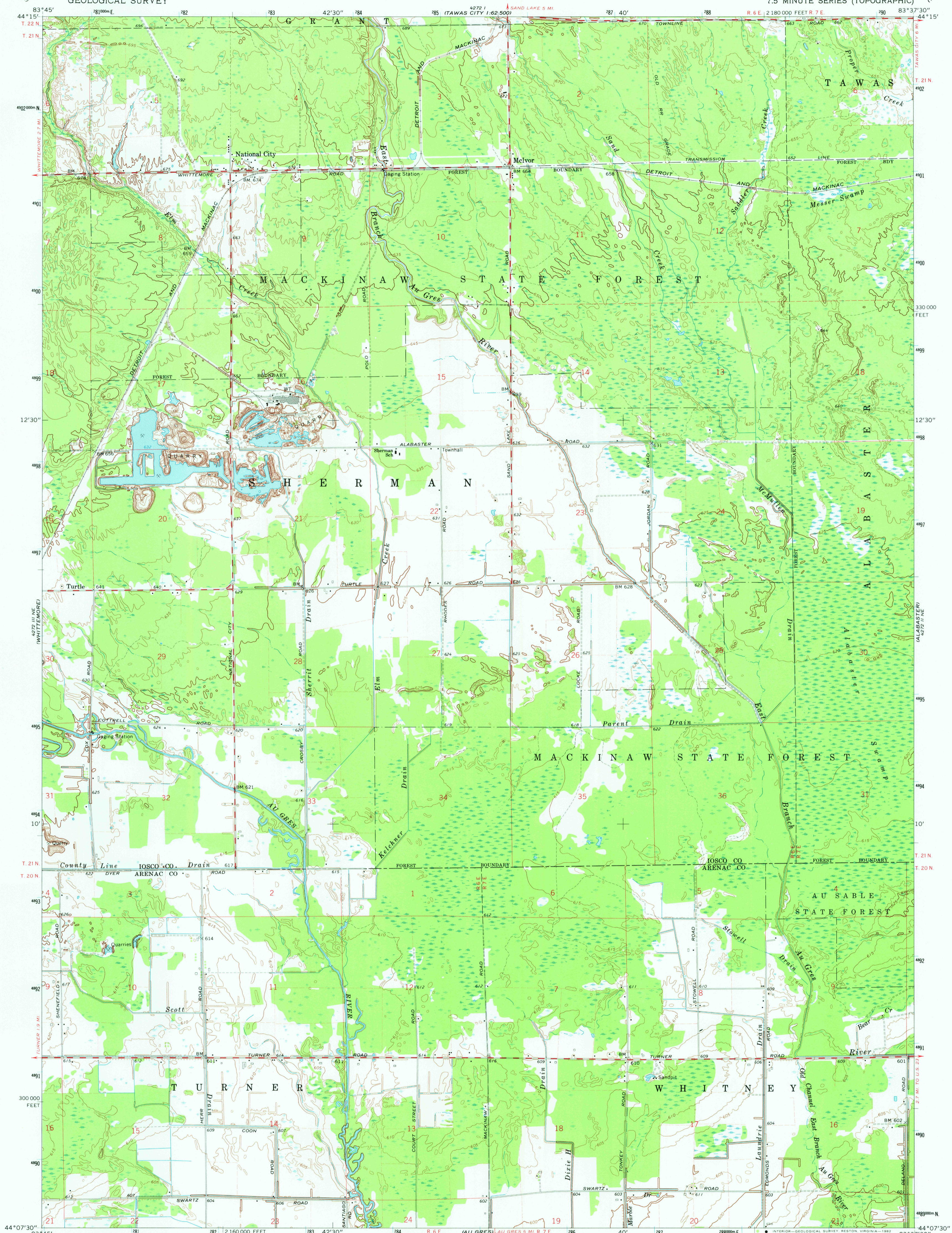
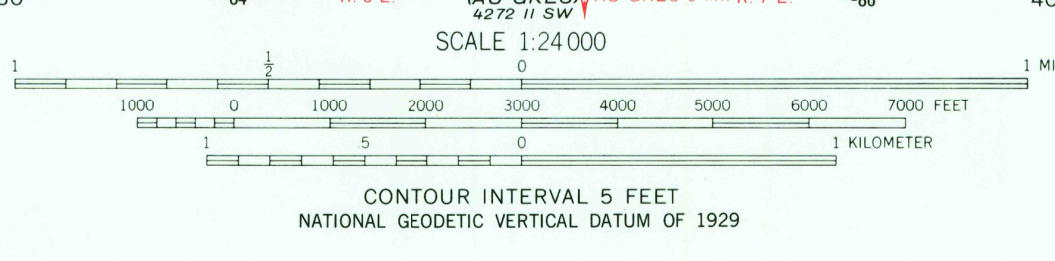
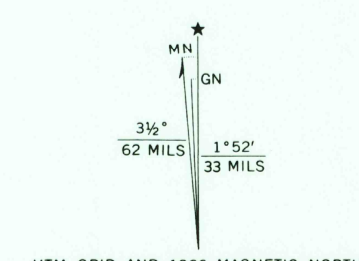


5272 I
TAWAS CITY 1:62 500



Map photospected 1976
No major culture or drainage changes observed

Mapmed, edited, and published by the Geological Survey
in cooperation with State of Michigan agencies
Control by USGS and USC&GS
Topography by photogrammetric methods from aerial
photographs taken 1965. Field checked 1966
Polycyclic projection. 1927 North American datum
10,000-foot grid based on Michigan coordinate system, central zone
1000-meter Universal Transverse Mercator grid ticks,
zone 17, shown in blue
To place on the predicted North American Datum 1983
move the projection lines 1 meter north and
5 meters west as shown by dashed corner ticks
There may be private inholdings within the boundaries of
the National or State reservations shown on this map



ROAD CLASSIFICATION
Medium-duty ——— Light-duty ———
Unimproved dirt - - - - -

THIS MAP COMPLIES WITH NATIONAL MAP ACCURACY STANDARDS
FOR SALE BY U. S. GEOLOGICAL SURVEY, RESTON, VIRGINIA 22092
AND BY THE GEOLOGICAL SURVEY DIVISION
MICHIGAN DEPARTMENT OF NATURAL RESOURCES, LANSING, MICHIGAN 48909
A FOLDER DESCRIBING TOPOGRAPHIC MAPS AND SYMBOLS IS AVAILABLE ON REQUEST

NATIONAL CITY, MICH.
N4407.5-W8337.5/7.5
1966
PHOTOINSPECTED 1976
AMS 4272 II NW-SERIES Y862

AUG 17 1982

1900