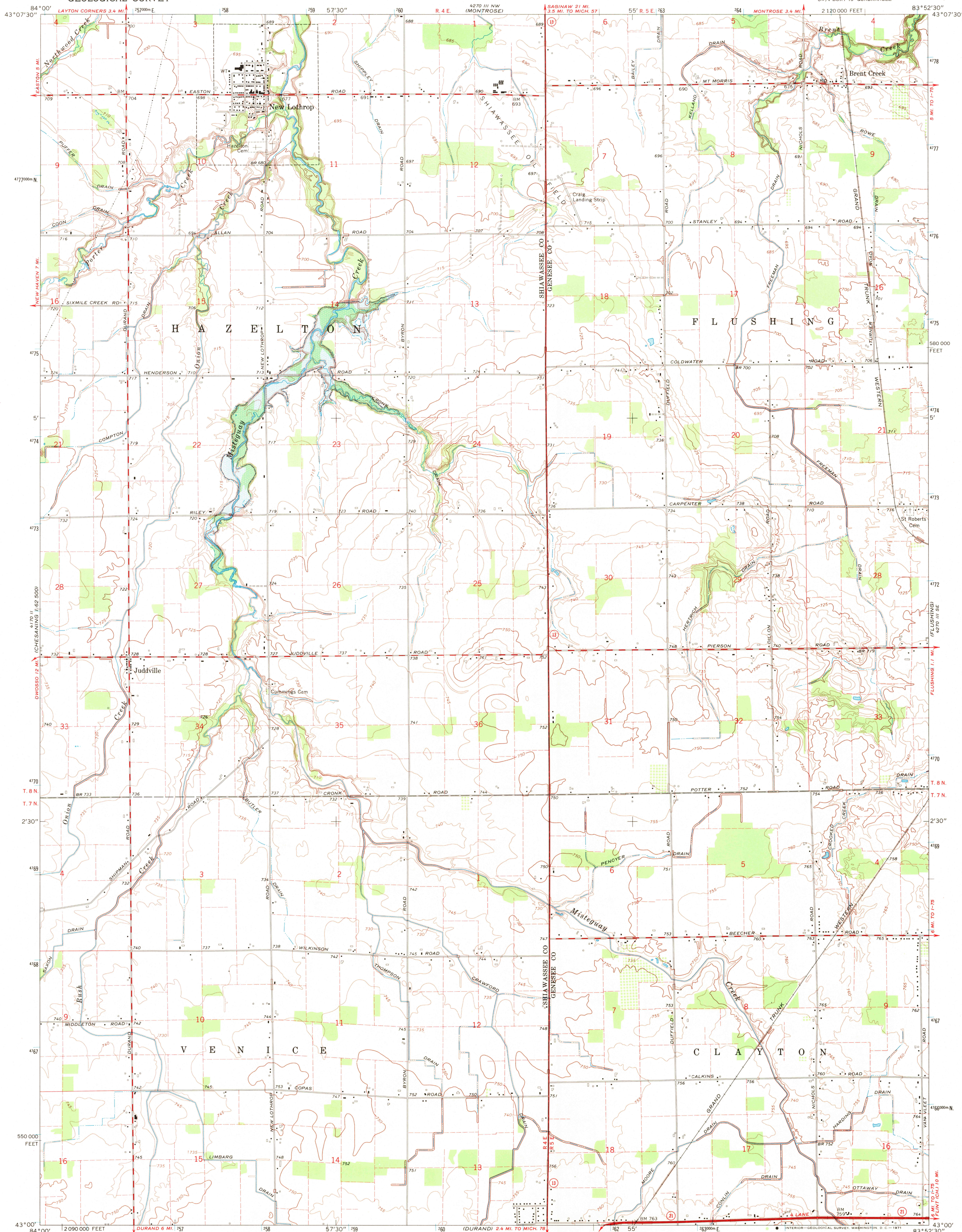


UNITED STATES
DEPARTMENT OF THE INTERIOR
GEOLOGICAL SURVEY

STATE OF MICHIGAN

NEW LOTHROP QUADRANGLE
MICHIGAN
7.5 MINUTE SERIES (TOPOGRAPHIC)
SW/4 BURT 15' QUADRANGLE



Maped, edited, and published by the Geological Survey
in cooperation with State of Michigan agencies

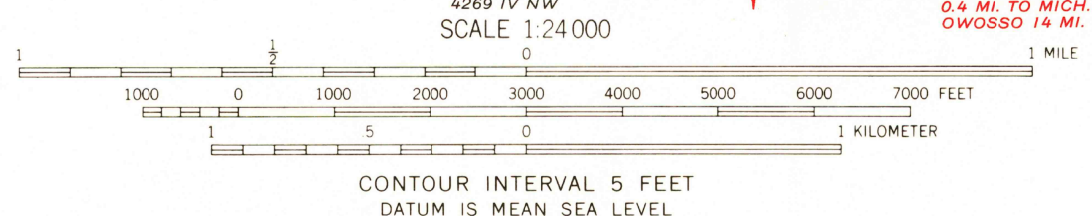
Control by USGS and USC&GS

Topography by photogrammetric methods from aerial
photographs taken 1966-67, and in part by the
Genesee County Metropolitan Planning Commission
field checked 1969

Polycyclic projection. 1927 North American datum
10,000-foot grid based on Michigan coordinate system, south zone
1000-meter Universal Transverse Mercator grid ticks,
zone 17, shown in blue

Area covered by dashed light-blue pattern
is subject to controlled inundation

Fine red dashed lines indicate selected fence and field lines where
generally visible on aerial photographs. This information is unchecked



ROAD CLASSIFICATION
Primary highway, all weather, hard surface
Secondary highway, all weather, hard surface
Light-duty road, all weather, improved surface
Unimproved road, fair or dry weather
State Route



USGS
HISTORICAL FILE
TOPOGRAPHIC DIVISION

NEW LOTHROP, MICH.
SW/4 BURT 15' QUADRANGLE
N4300-W8352.5/7.5

1969

AMS 4270 III SW-SERIES V862

SEP 13 1971

THIS MAP COMPLIES WITH NATIONAL MAP ACCURACY STANDARDS
FOR SALE BY U.S. GEOLOGICAL SURVEY, WASHINGTON, D.C. 20542
A FOLDER DESCRIBING TOPOGRAPHIC MAPS AND SYMBOLS IS AVAILABLE ON REQUEST