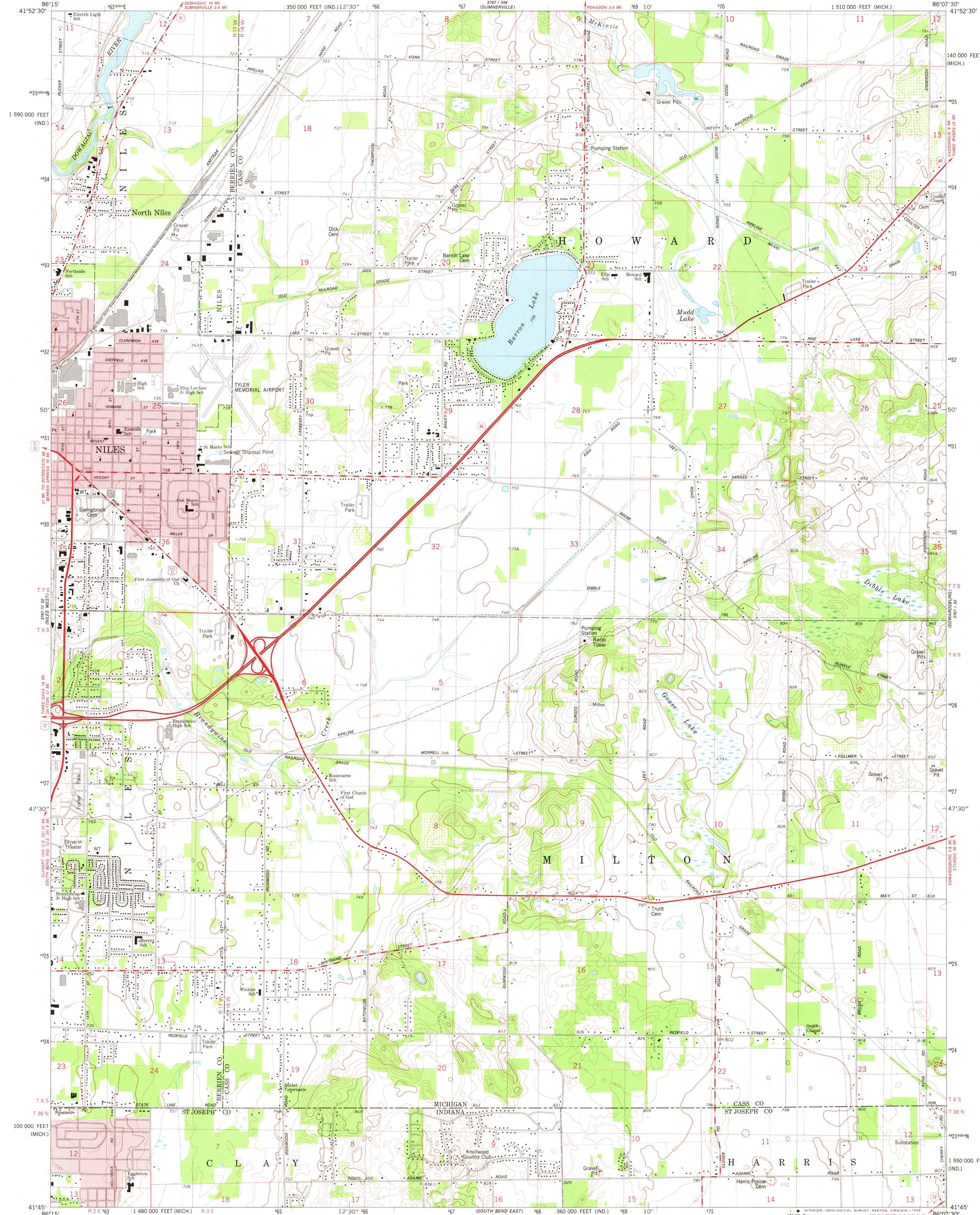
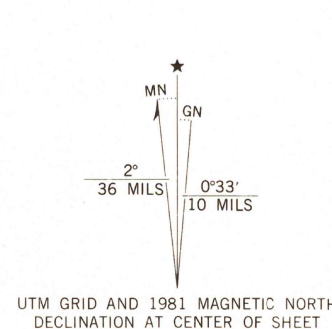


UNITED STATES  
DEPARTMENT OF THE INTERIOR  
GEOLOGICAL SURVEY

NILES EAST QUADRANGLE  
MICHIGAN-INDIANA  
7.5 MINUTE SERIES (TOPOGRAPHIC)  
SW/4 CASSOPOLIS 15' QUADRANGLE  
1 510 000 FEET (MICH.)



Mapped, edited, and published by the Geological Survey  
Control by USGS and NOS/NOAA  
Topography by photogrammetric methods from aerial photographs  
taken 1975. Field checked 1977. Map edited 1981  
Projection: Michigan coordinate system, south zone  
(Lambert conformal conic)  
10,000-foot grid ticks based on Michigan coordinate  
system, south zone and Indiana coordinate system, east zone  
1000-meter Universal Transverse Mercator grid, zone 16  
1927 North American Datum  
To place on the predicted North American Datum 1983  
move the projection lines 1 meter north and  
2 meters east as shown by dashed corner ticks  
Red tint indicates areas in which only landmark buildings are shown  
Fine red dashed lines indicate selected fence and field lines where  
generally visible on aerial photographs. This information is unchecked



SCALE 1:24 000  
1 1000 2000 3000 4000 5000 6000 7000 FEET  
1 KILOMETER  
CONTOUR INTERVAL 10 FEET  
NATIONAL GEODETIC VERTICAL DATUM OF 1929  
THIS MAP COMPLIES WITH NATIONAL MAP ACCURACY STANDARDS  
FOR SALE BY U.S. GEOLOGICAL SURVEY, RESTON, VIRGINIA 22092  
AND BY THE GEOLOGICAL SURVEY DIVISION  
MICHIGAN DEPARTMENT OF NATURAL RESOURCES, LANSING, MICHIGAN 48909  
AND INDIANA DEPARTMENT OF NATURAL RESOURCES, INDIANAPOLIS, INDIANA 46204  
A FOLDER DESCRIBING TOPOGRAPHIC MAPS AND SYMBOLS IS AVAILABLE ON REQUEST



ROAD CLASSIFICATION  
Primary highway hard surface  
Secondary highway hard surface  
Unimproved road  
Light-duty road, hard or improved surface  
Unimproved road  
Interstate Route  
U. S. Route  
State Route  
NILES EAST, MICH.-IND.  
SW/4 CASSOPOLIS 15' QUADRANGLE  
N4145-W8607.5/7.5  
1981  
DMA 3767 I SW-SERIES V862

MAR 10 1982