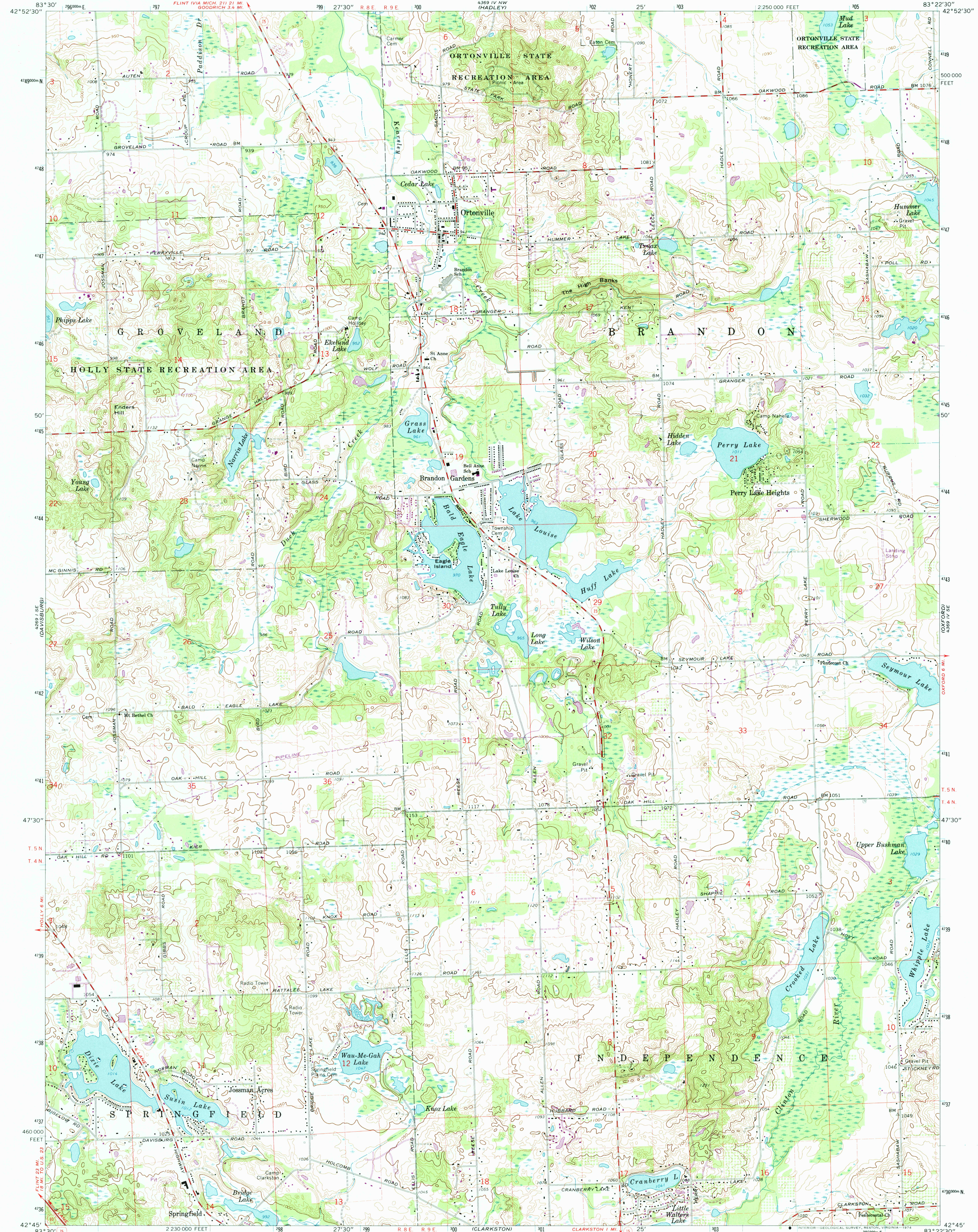


4369 IV NW
(HADLEY)

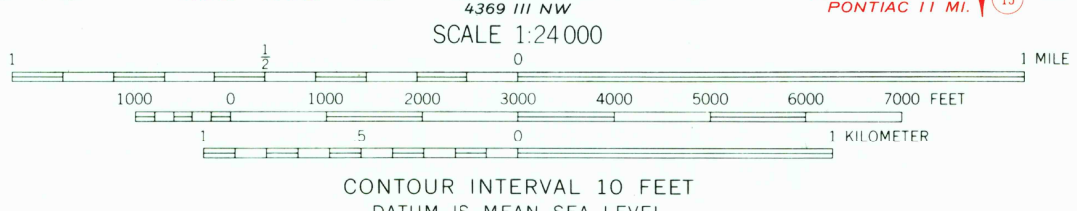
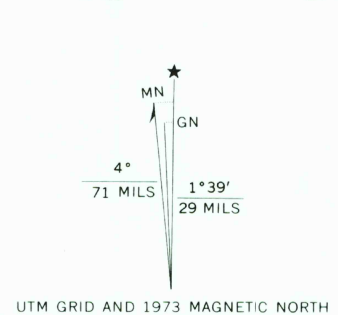
UNITED STATES
DEPARTMENT OF THE INTERIOR
GEOLOGICAL SURVEY

ORTONVILLE QUADRANGLE
MICHIGAN—OAKLAND CO.
7.5 MINUTE SERIES (TOPOGRAPHIC)

4369 IV SE
(METAMORA)



Mapped, edited, and published by the Geological Survey
in cooperation with State of Michigan agencies
Control by USGS and USC&GS
Planimetry by photogrammetric methods from aerial photographs
Topography by planetable surveys 1942-43. Revised from aerial
photographs taken 1967. Field checked 1968
Polyconic projection. 1927 North American datum
10,000-foot grid based on Michigan coordinate system, south zone
1000-meter Universal Transverse Mercator grid ticks,
zone 17, shown in blue
Fine red dashed lines indicate selected fence and field lines where
generally visible on aerial photographs. This information is unchecked
Revisions shown in purple compiled from aerial photographs
taken 1973. This information not field checked



ROAD CLASSIFICATION
Primary highway, all weather, hard surface
Secondary highway, all weather, hard surface
Light duty road, all weather, improved surface
Unimproved road, fair or dry weather
Interstate Route
U. S. Route
State Route

USGS
Historical File
Topographic Division

ORTONVILLE, MICH.
N4245—W8322.5/7.5
1968
PHOTOREVISED 1973
AMS 4369 IV SW—SERIES V862

DEC 1 6 1974