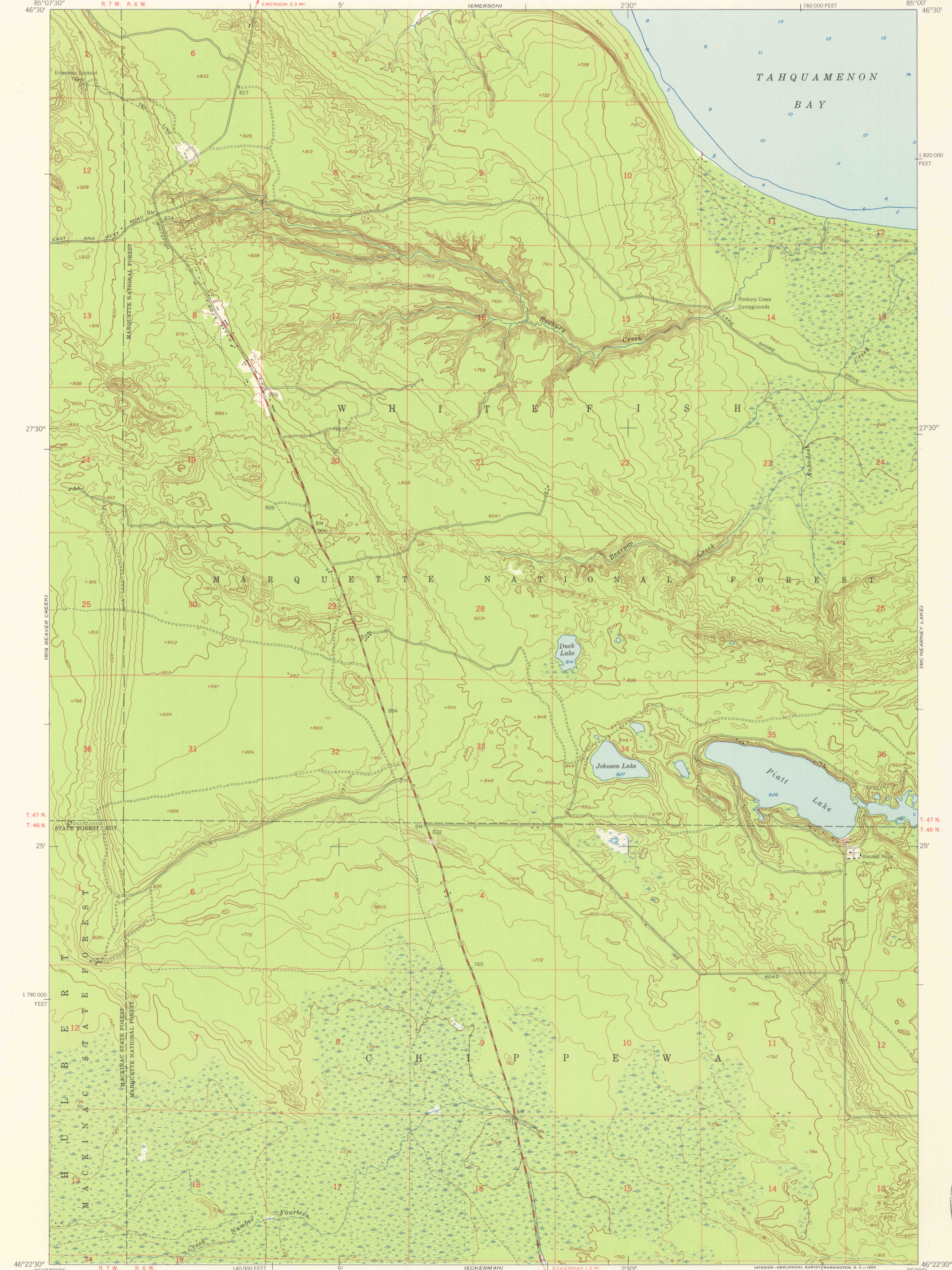
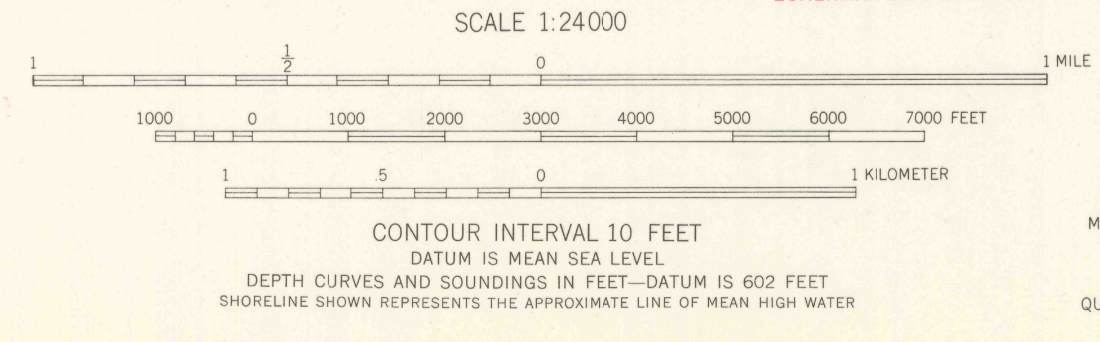


85°07'30"
46°30'



Mapped by the Army Map Service
Published for civil use by the Geological Survey
Control by USC&GS, USCE, USLS, and IBC
Topography by photogrammetric methods
Aerial photographs taken 1950. Field check 1951
Coastal hydrography by U S Lake Survey
Polyconic projection. 1927 North American datum
10,000-foot grid based on Michigan coordinate system,
east zone
Unchecked elevations are shown in brown
Locations of all boundaries are approximate

TRUE NORTH
MAGNETIC NORTH
APPROXIMATE MEAN
DECLINATION, 1951



ROAD CLASSIFICATION
Heavy-duty 3 LANE 6 LANE Light-duty
Medium-duty 2 LANE 6 LANE Unimproved dirt
U. S. Route
State Route

PIATT LAKE, MICH.
N4622.5—W8500/7.5
1951

THIS MAP COMPLIES WITH NATIONAL MAP ACCURACY STANDARDS
FOR SALE BY U. S. GEOLOGICAL SURVEY, WASHINGTON 25, D. C.
A FOLDER DESCRIBING TOPOGRAPHIC MAPS AND SYMBOLS IS AVAILABLE ON REQUEST

LIBRARY
SEP 1 1955
U. S. GEOLOGICAL SURVEY
WASHINGTON, D. C.