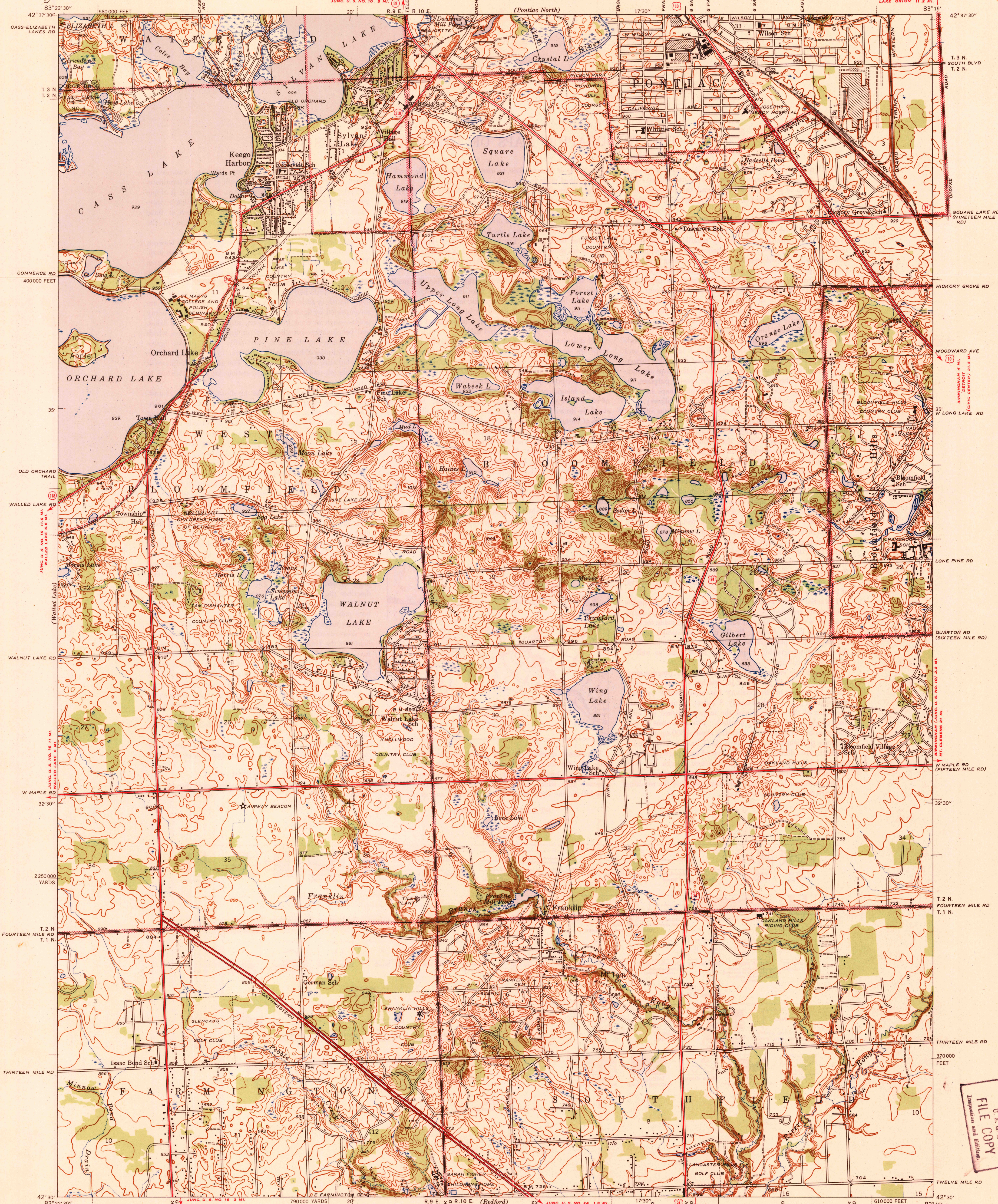


UNITED STATES
DEPARTMENT OF THE INTERIOR
GEOLOGICAL SURVEY

U. S. G. S.
FILE COPY
Inspection and Editing.

MICHIGAN
STATE HIGHWAY DEPARTMENT
LLOYD B. REID
STATE HIGHWAY COMMISSIONER

MICHIGAN
(OAKLAND COUNTY)
PONTIAC SOUTH QUADRANGLE
7 1/2-MINUTE SERIES



Topography by W. S. Gehres and G. M. Perham
Surveyed in 1941
Only landmark buildings are shown within
the city limits of Pontiac

APPROXIMATE MEAN
DECLINATION, 1941

Contour interval 10 feet
Datum is mean sea level

USGS
Historical File
Topographic Division

Polyconic projection. 1927 North American datum
5000 yard grid based on U. S. zone system, B
10000 foot grid based on Michigan (East)
rectangular coordinate system

PONTIAC SOUTH, MICH.

Edition of 1943

N4230-W8315/7.5

SEP 20 1943

U. S. G. S.
FILE COPY
Inspection and Editing.

3125