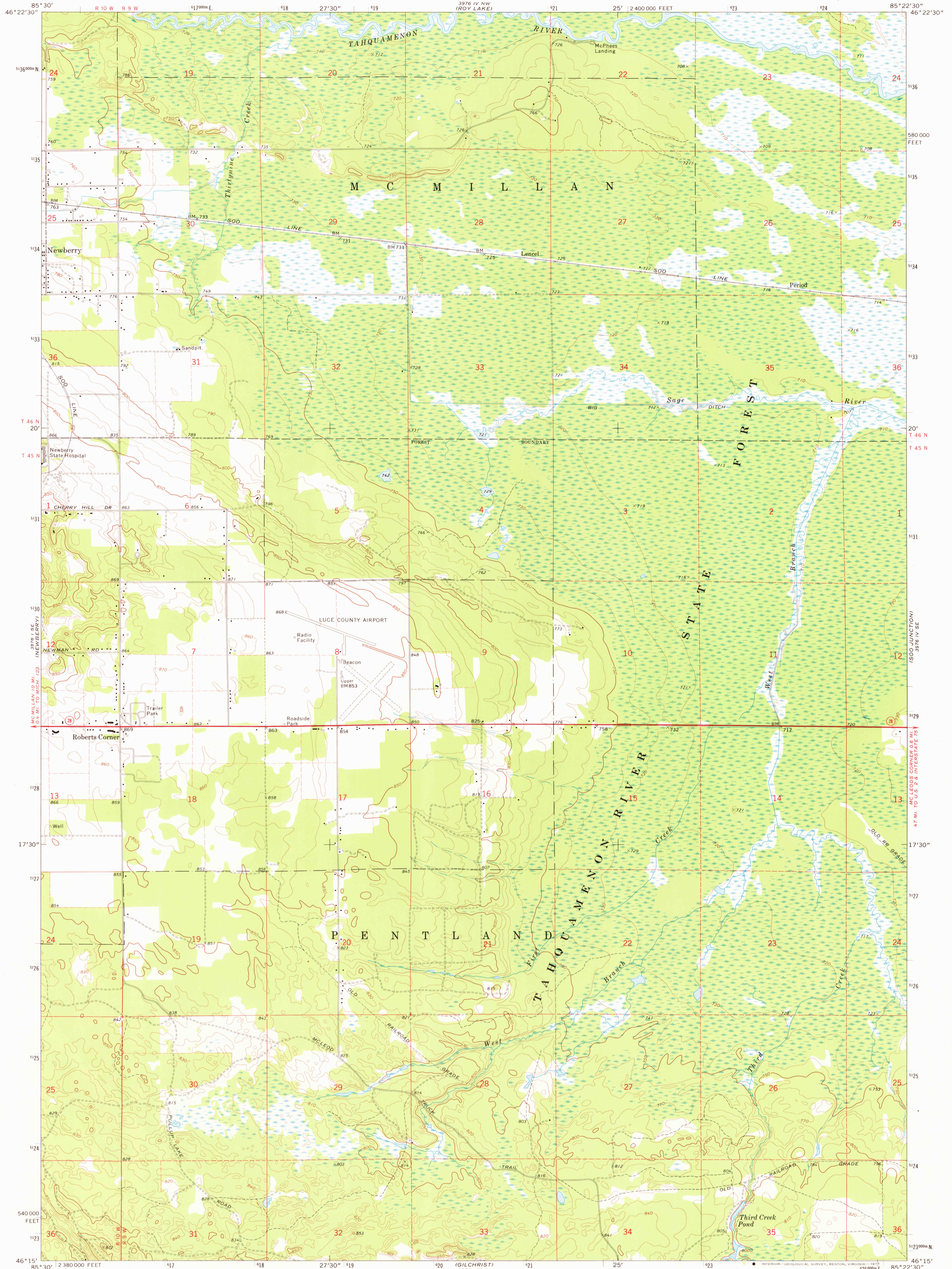
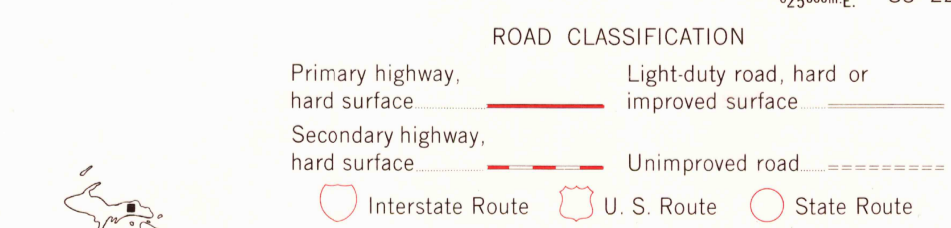
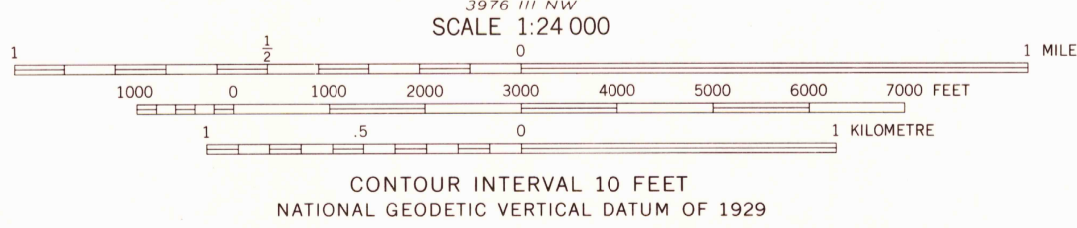
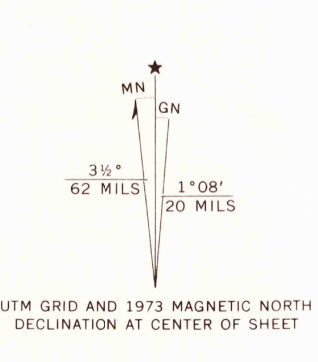


UNITED STATES
DEPARTMENT OF THE INTERIOR
GEOLOGICAL SURVEY

ROBERTS CORNER QUADRANGLE
MICHIGAN—LUCE CO.
7.5 MINUTE SERIES (TOPOGRAPHIC)



Mapped, edited, and published by the Geological Survey
Control by USGS and NOS/NOAA
Topography by photogrammetric methods from aerial photographs taken 1973. Field checked 1973
Projection and 10,000-foot grid ticks: Michigan coordinate system, north zone (Lambert conformal conic) 1000-metre Universal Transverse Mercator grid ticks, zone 16, shown in blue. 1927 North American datum
Fine red dashed lines indicate selected fence and field lines where generally visible on aerial photographs
This information is unchecked



ROBERTS CORNER, MICH.
N4615—W8522.5/7.5
1973

THIS MAP COMPLIES WITH NATIONAL MAP ACCURACY STANDARDS
FOR SALE BY U.S. GEOLOGICAL SURVEY, RESTON, VIRGINIA 22092
A FOLDER DESCRIBING TOPOGRAPHIC MAPS AND SYMBOLS IS AVAILABLE ON REQUEST

AMS 3976 IV SW—SERIES V862

2950
AUG 15 1977