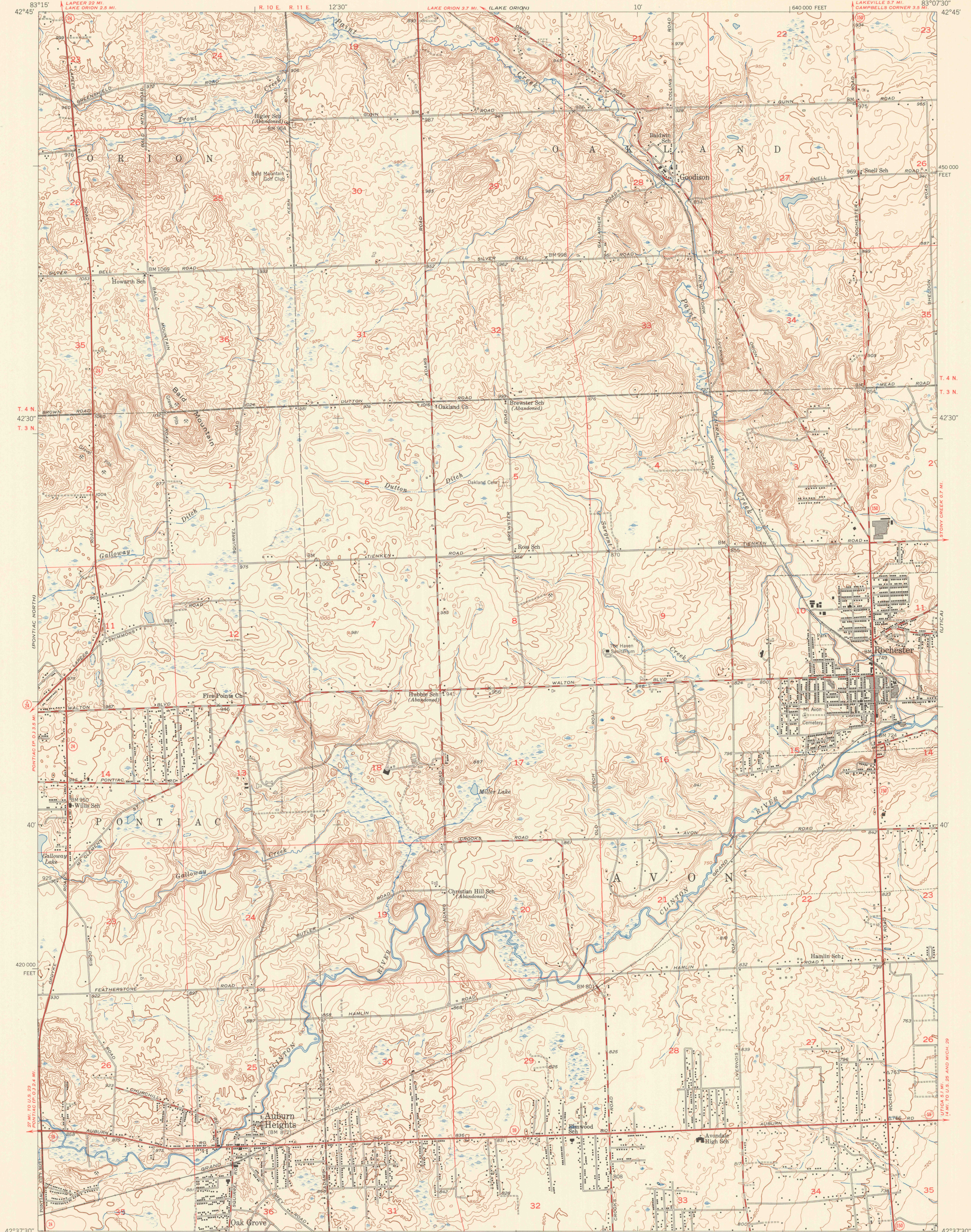
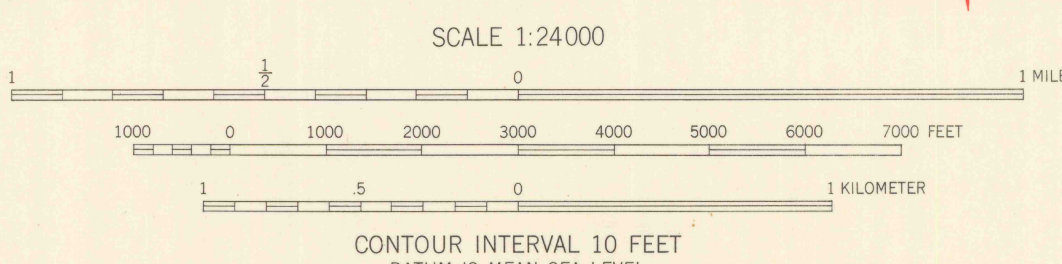


FOXPOSD

ROMED



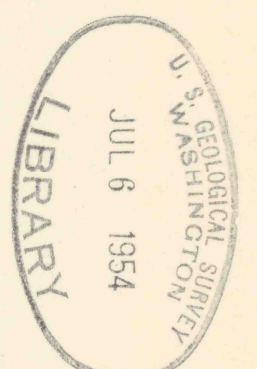
Mapped, edited, and published by the Geological Survey
Control by USGS and USC&GS
Culture and drainage in part compiled from aerial photographs
Topography by plane-table surveys 1942-1943. Culture revised 1952
Polyconic projection. 1927 North American datum
10,000-foot grid based on Michigan coordinate system,
east zone



ROAD CLASSIFICATION
Heavy-duty 4 LANE 6 LANE Light-duty
Medium-duty 4 LANE 6 LANE Unimproved dirt
U. S. Route State Route

ROCHESTER, MICH.
NW/4 ROCHESTER 15' QUADRANGLE
N4237.5-W8307.5/7.5

1952



APPROXIMATE MEAN
DECLINATION, 1952

THIS MAP COMPLIES WITH NATIONAL MAP ACCURACY STANDARDS
FOR SALE BY U. S. GEOLOGICAL SURVEY, WASHINGTON 25, D. C.
A FOLDER DESCRIBING TOPOGRAPHIC MAPS AND SYMBOLS IS AVAILABLE ON REQUEST

