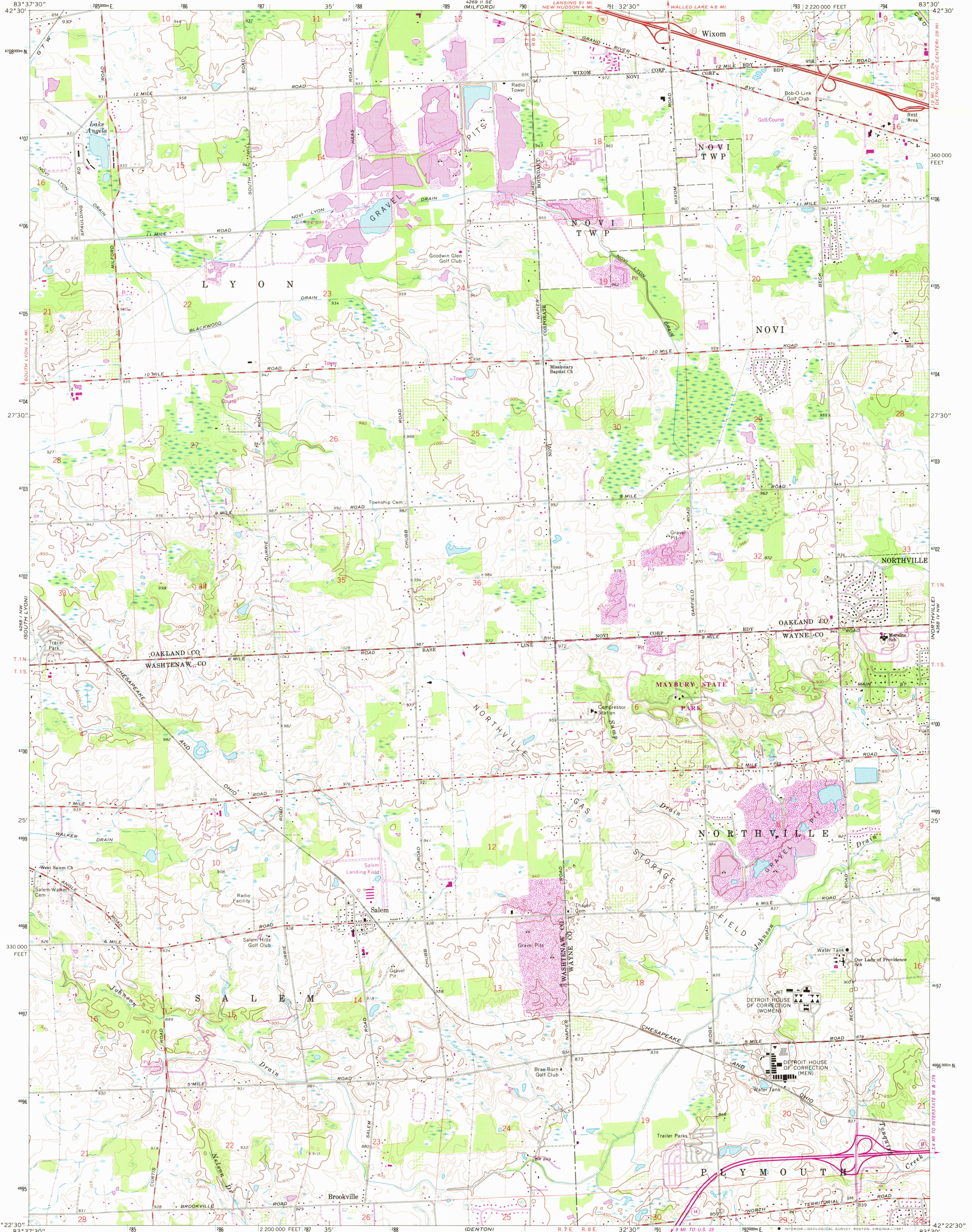
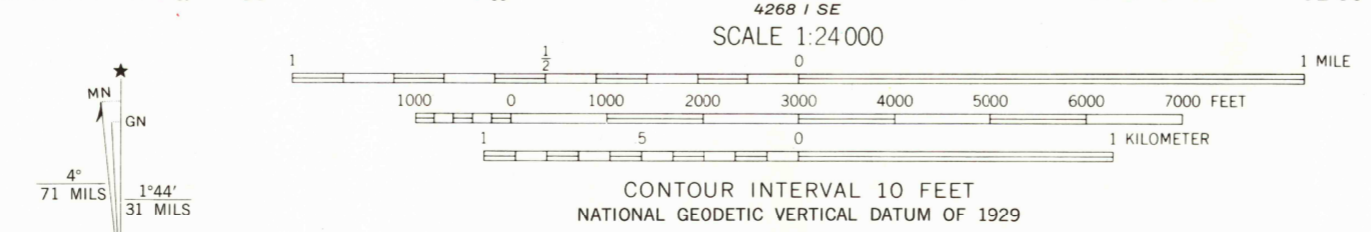


889' BY WALLED LAKE



Mapped, edited, and published by the Geological Survey in cooperation with State of Michigan agencies
Control by USGS and USC&GS
Planimetry by photogrammetric methods from aerial photographs taken 1952
Topography by plane table surveys 1941-42 and 1953. Revised from aerial photographs taken 1967. Field checked 1969
Polyconic projection. 1927 North American datum
10,000-foot grid based on Michigan coordinate system, south zone
1000-meter Universal Transverse Mercator grid ticks, zone 17, shown in blue
To place on the predicted North American Datum 1983 move the projection lines 6 meters west as shown by dashed corner ticks
There may be private inholdings within the boundaries of the National or State reservations shown on this map



THIS MAP COMPLIES WITH NATIONAL MAP ACCURACY STANDARDS
FOR SALE BY U. S. GEOLOGICAL SURVEY, RESTON, VIRGINIA 22092
AND BY THE GEOLOGICAL SURVEY DIVISION
MICHIGAN DEPARTMENT OF NATURAL RESOURCES, LANSING, MICHIGAN 48909
A FOLDER DESCRIBING TOPOGRAPHIC MAPS AND SYMBOLS IS AVAILABLE ON REQUEST

ROAD CLASSIFICATION

| | |
|----------------------------------------------|-----------------------------------------------|
| Primary highway, all weather, hard surface | Light duty road, all weather improved surface |
| Secondary highway, all weather, hard surface | Unimproved road, fair or dry weather |
| Interstate Route | State Route |



SALEM, MICH.
N4222.5-W8330.7.5

1969
PHOTOREVISED 1973 AND 1980
DMA 4268 1 NE-SERIES V862

USGS
Historical File
National Mapping Div.
MAR 12 1981

2050