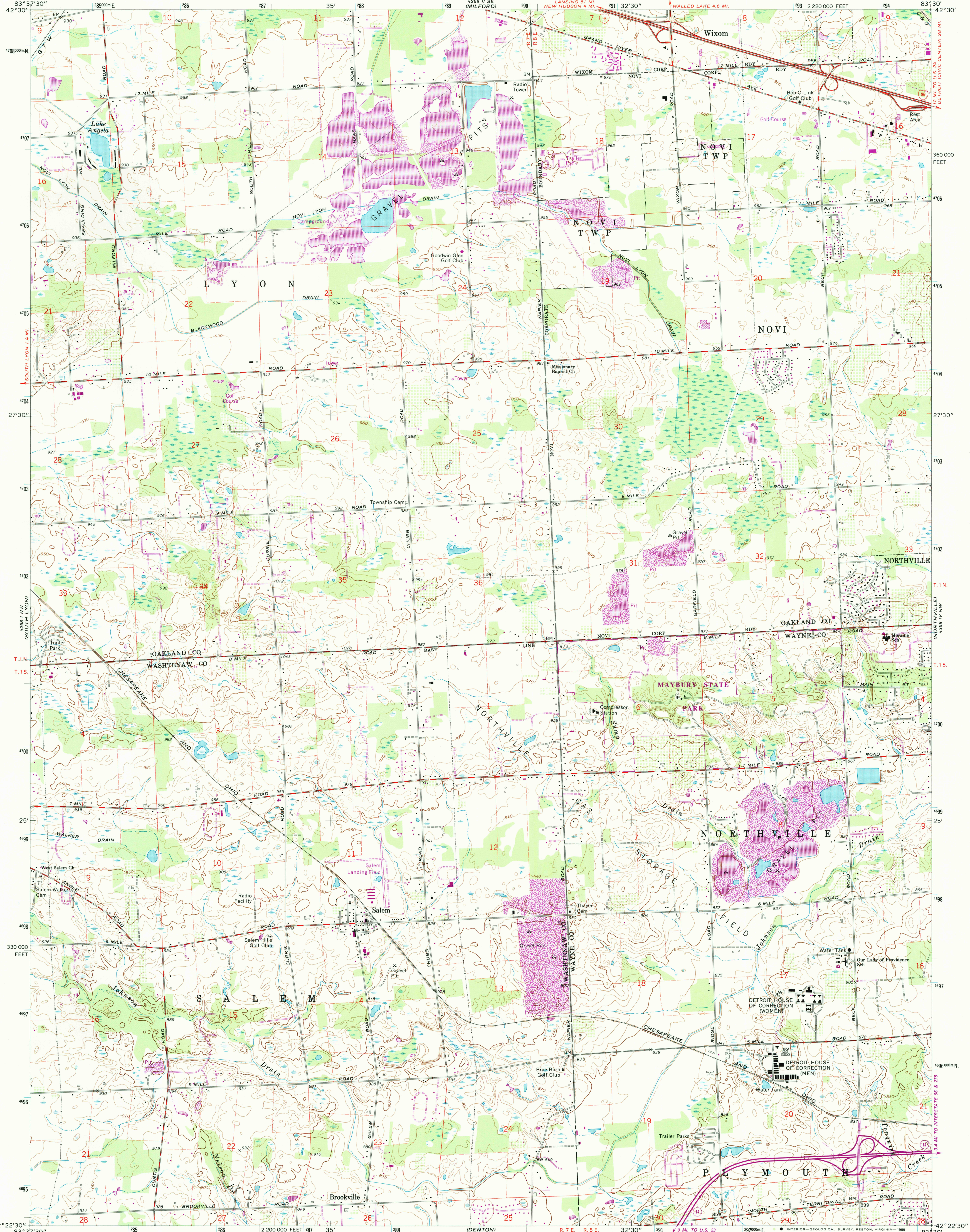


UNITED STATES  
DEPARTMENT OF THE INTERIOR  
GEOLOGICAL SURVEY

SALEM QUADRANGLE  
MICHIGAN  
7.5 MINUTE SERIES (TOPOGRAPHIC)



Mapped, edited, and published by the Geological Survey in cooperation with State of Michigan agencies  
Control by USGS and USC&GS  
Planimetry by photogrammetric methods from aerial photographs taken 1952  
Topography by planimetric surveys 1941-42 and 1953. Revised from aerial photographs taken 1967. Field checked 1969  
Polyconic projection. 1927 North American datum 10,000-foot grid based on Michigan coordinate system, south zone 1000-meter Universal Transverse Mercator grid ticks, zone 17, shown in blue  
To place on the predicted North American Datum 1983 move the projection lines 6 meters west as shown by dashed corner ticks  
There may be private inholdings within the boundaries of the National or State reservations shown on this map

SCALE 1:24,000  
CONTOUR INTERVAL 10 FEET  
NATIONAL GEODETIC VERTICAL DATUM OF 1929  
THIS MAP COMPLIES WITH NATIONAL MAP ACCURACY STANDARDS FOR SALE BY U.S. GEOLOGICAL SURVEY, DENVER, COLORADO 80225 OR RESTON, VIRGINIA 22092  
AND GEOLOGICAL SURVEY DIVISION  
MICHIGAN DEPARTMENT OF NATURAL RESOURCES, LANSING, MICHIGAN 48909  
A FOLDER DESCRIBING TOPOGRAPHIC MAPS AND SYMBOLS IS AVAILABLE ON REQUEST  
Revisions shown in purple compiled from aerial photographs taken 1973 and 1978. Map edited 1980  
This information not field checked

ROAD CLASSIFICATION  
Primary highway, all weather, hard surface  
Secondary highway, all weather, hard surface  
Light-duty road, all weather improved surface  
Unimproved road, fair or dry weather  
Interstate Route  
State Route  
SALEM, MICH.  
42083-05-TF-024  
1969  
PHOTOREVISED 1973 AND 1980  
DMA 4268 I NE-SERIES V862

RETURN TO:  
USGS AND HISTORICAL MAP ARCHIVES  
5-17-89