

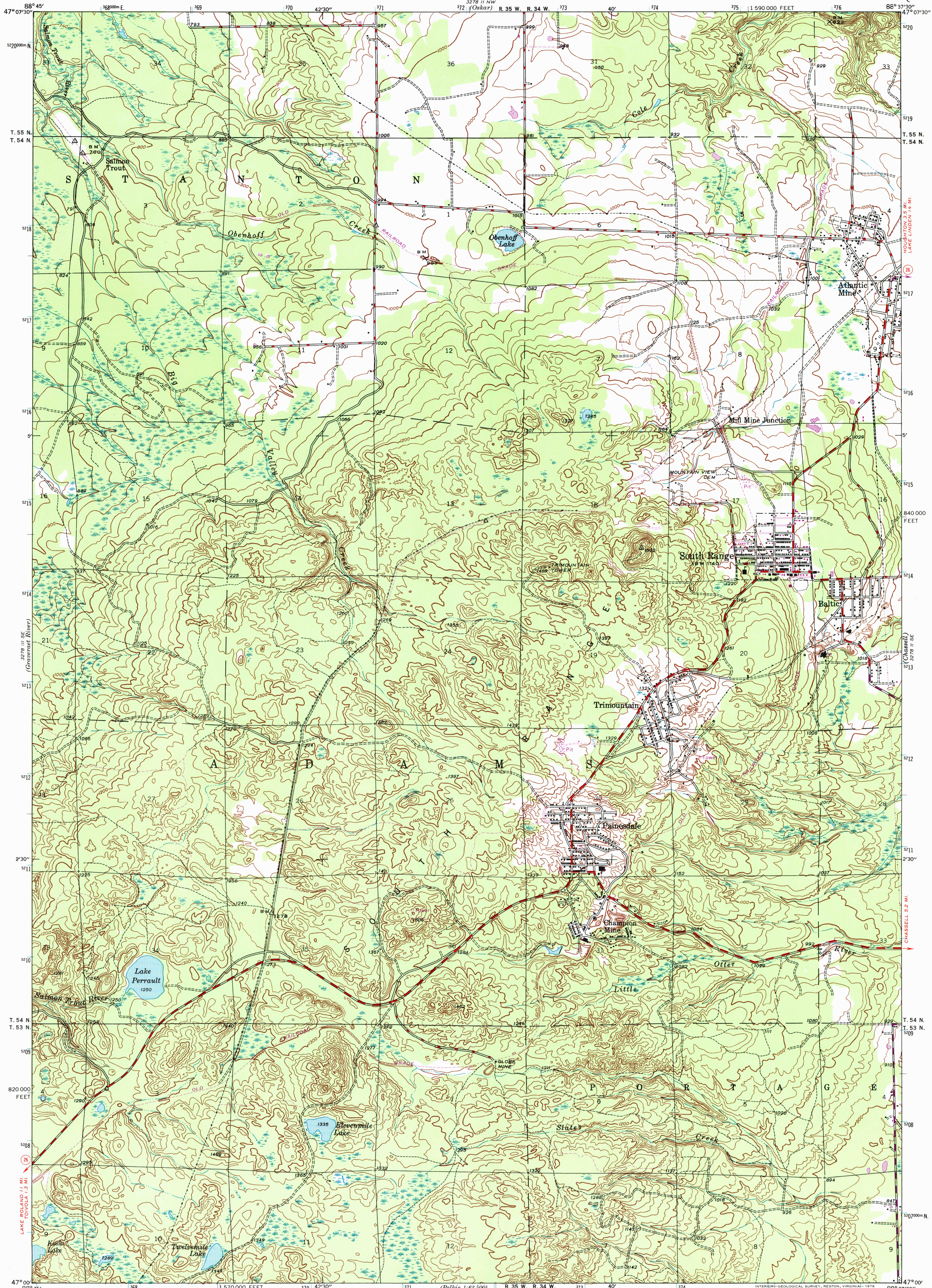
3278 II NE  
(Houghton 1:50,000)



U.S. DEPARTMENT OF THE INTERIOR  
U.S. GEOLOGICAL SURVEY

SOUTH RANGE QUADRANGLE  
MICHIGAN—HOUGHTON CO.  
7.5 MINUTE SERIES (TOPOGRAPHIC)  
SW/4 HOUGHTON 15' QUADRANGLE

3278 II NE  
(Houghton)

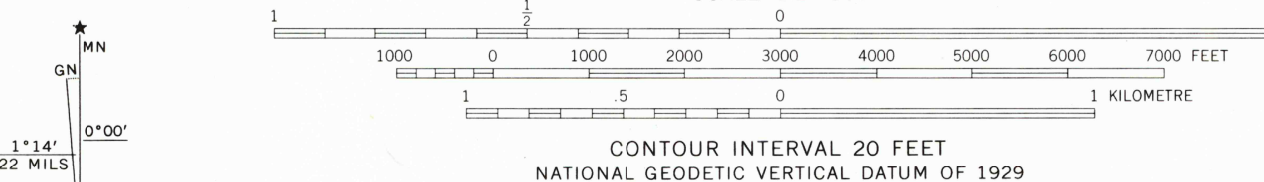


Mapped by the Geological Survey  
1946

SCALE 1:24 000

Polyconic projection. 1927 North American datum.  
10,000-foot grid based on Michigan coordinate system,  
north zone  
1000-metre Universal Transverse Mercator grid ticks,  
zone 16, shown in blue

- Dependable hard-surface road
- Heavy-duty road
- Seasonal hard-surface road
- More than two lanes indicated along road with tick at point of change
- Revisions shown in purple compiled from aerial photographs taken 1975. This information not field checked
- Dry weather roads
- Loose-surface, graded
- Gravel, graded
- State Route
- U.S. Route



SOUTH RANGE, MICH.  
SW/4 HOUGHTON 15' QUADRANGLE  
N4700—W8837.5/7.5

1946  
PHOTOREVISED 1975  
AMS 3278 II SW—SERIES V862

RECEIVED  
APR 3 0 2002  
HISTORICAL MAP ARCHIVES



FOR SALE BY U.S. GEOLOGICAL SURVEY, RESTON, VIRGINIA 22092  
A FOLDER DESCRIBING TOPOGRAPHIC MAPS AND SYMBOLS IS AVAILABLE ON REQUEST