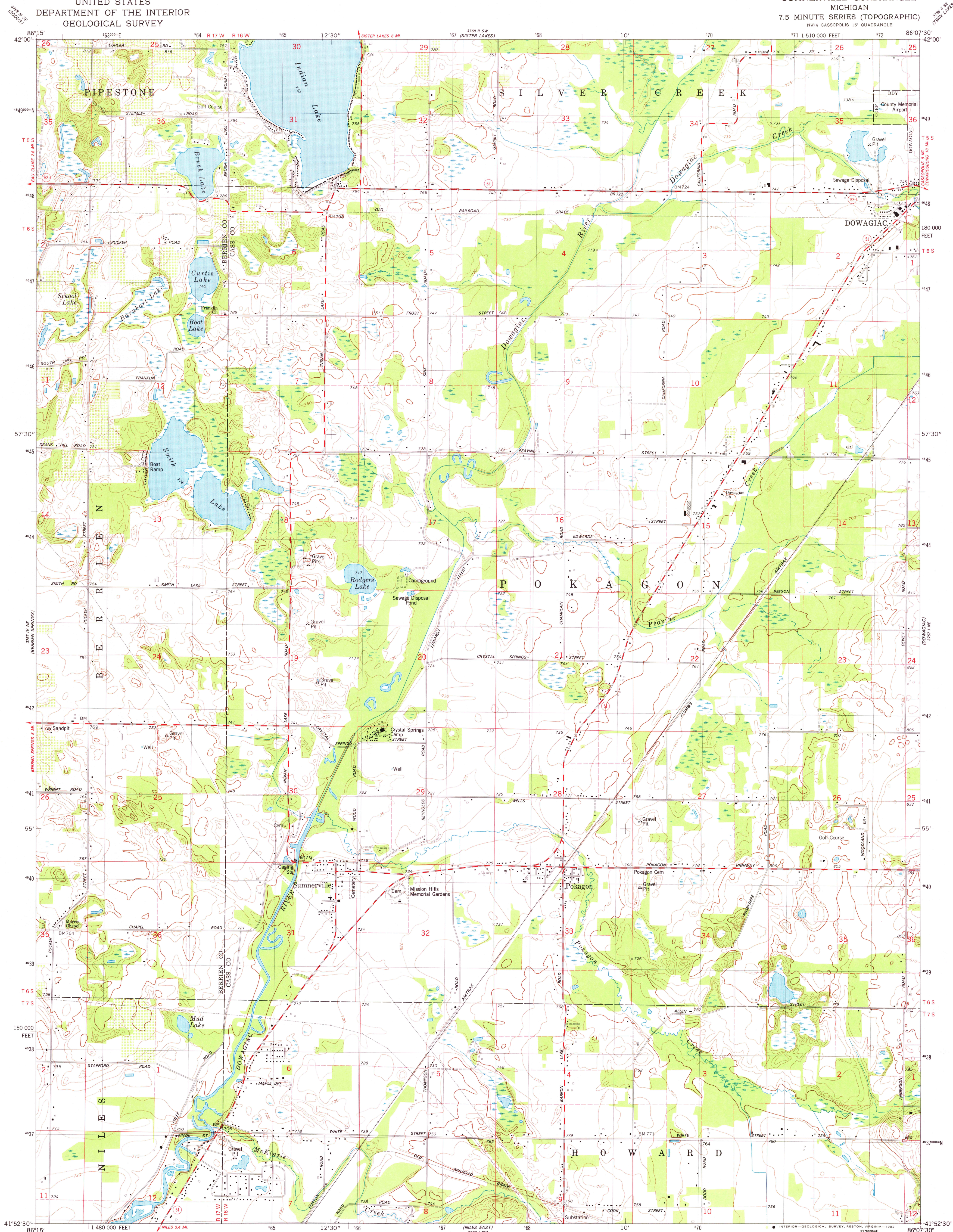
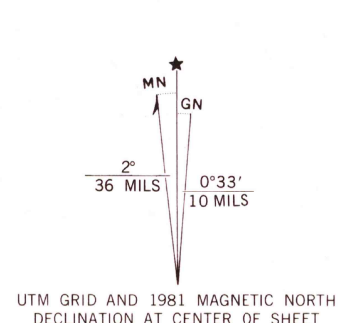


UNITED STATES  
DEPARTMENT OF THE INTERIOR  
GEOLOGICAL SURVEY

SUMNERVILLE QUADRANGLE  
MICHIGAN  
7.5 MINUTE SERIES (TOPOGRAPHIC)



Mapped, edited, and published by the Geological Survey  
Control by USGS and NOS/NOAA  
Topography by photogrammetric methods from aerial photographs  
taken 1975. Field checked 1977. Map edited 1981  
Projection and 10,000-foot grid ticks: Michigan coordinate  
system, south zone (Lambert conformal conic)  
1000-meter Universal Transverse Mercator grid, zone 16  
1927 North American Datum  
To place on the predicted North American Datum 1983  
move the projection lines 1 meter north and  
2 meters east as shown by dashed corner ticks  
Fine red dashed lines indicate selected fence and field lines where  
generally visible on aerial photographs. This information is unchecked



SCALE 1:24,000  
1000 0 1000 2000 3000 4000 5000 6000 7000 FEET  
1 0 1 2 3 4 5 6 7 8 9 10 KILOMETER  
CONTOUR INTERVAL 10 FEET  
DOTTED LINES REPRESENT 5-FOOT CONTOURS  
NATIONAL GEODETIC VERTICAL DATUM OF 1929  
THIS MAP COMPLIES WITH NATIONAL MAP ACCURACY STANDARDS  
FOR SALE BY U. S. GEOLOGICAL SURVEY, RESTON, VIRGINIA 22092  
AND BY THE GEOLOGICAL SURVEY DIVISION  
MICHIGAN DEPARTMENT OF NATURAL RESOURCES, LANSING, MICHIGAN 48909  
A FOLDER DESCRIBING TOPOGRAPHIC MAPS AND SYMBOLS IS AVAILABLE ON REQUEST



ROAD CLASSIFICATION  
Primary highway, hard surface ———— Light-duty road, hard or improved surface ————  
Secondary highway, hard surface ———— Unimproved road ————  
Interstate Route ———— U. S. Route ———— State Route ————

SUMNERVILLE, MICH.  
NW/4 CASSPOLIS 15' QUADRANGLE  
N4152.5-W8607.5/7.5

1981

DMA 3767 1 NW-SERIES V862

MAR 3 1982

27 50