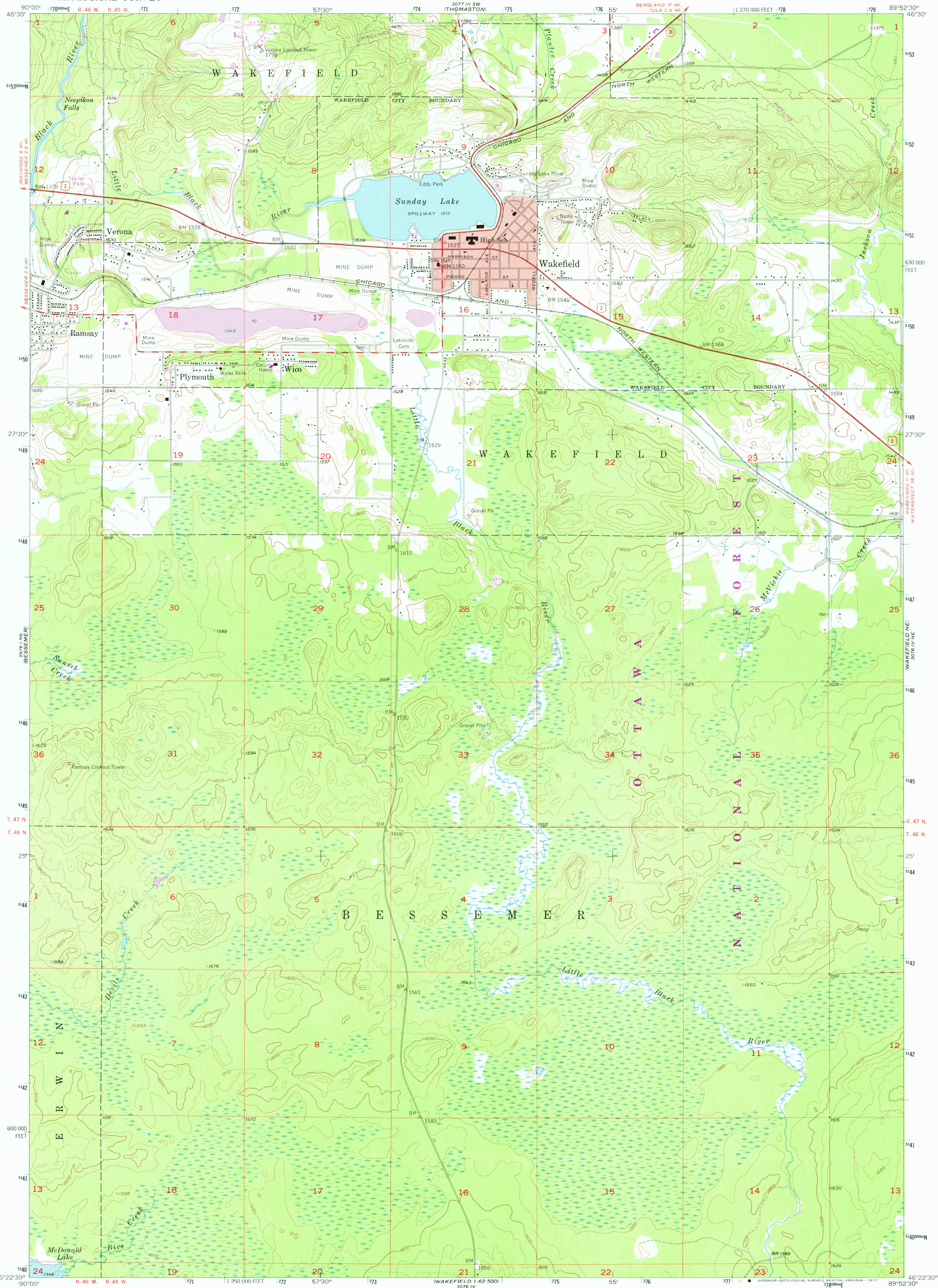


UNITED STATES  
DEPARTMENT OF THE INTERIOR  
GEOLOGICAL SURVEY

WAKEFIELD QUADRANGLE  
MICHIGAN—GOGEBC CO.  
7.5 MINUTE SERIES (TOPOGRAPHIC)  
NW 1/4 WAKEFIELD 15' QUADRANGLE



Mapped, edited, and published by the Geological Survey

Control by USGS and USC&GS

Topography from aerial photographs by Kelsh plotter

Aerial photographs taken 1951. Field check 1955

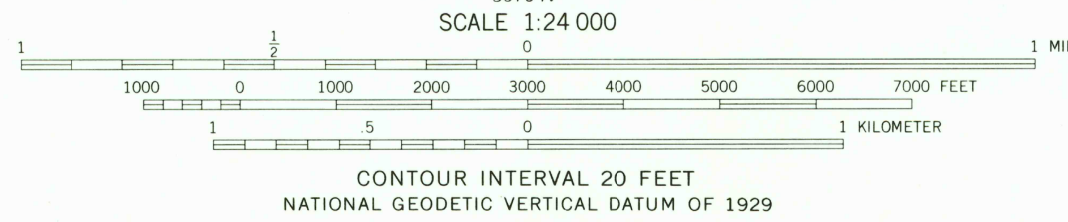
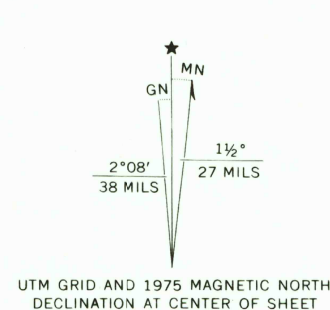
Polyconic projection. 1927 North American datum  
10,000-foot grid based on Michigan coordinate system,  
north zone

Red tint indicates area in which only  
landmark buildings are shown

Unchecked elevations are shown in brown

1000-meter Universal Transverse Mercator grid ticks,  
zone 16, shown in blue

Revisions shown in purple compiled from aerial photographs  
taken 1975. This information not field checked



ROAD CLASSIFICATION  
Heavy-duty ——— Light-duty ———  
Medium-duty ——— Unimproved dirt ———  
U.S. Route ——— State Route ———

USGS  
Historical File  
Topographic Division

WAKEFIELD, MICH.  
NW 1/4 WAKEFIELD 15' QUADRANGLE  
N 4622.5—W 8952.5/7.5

1955  
PHOTOREVISED 1975  
AMS 3076 IV NW-SERIES V362

SEP 26 1977  
2700