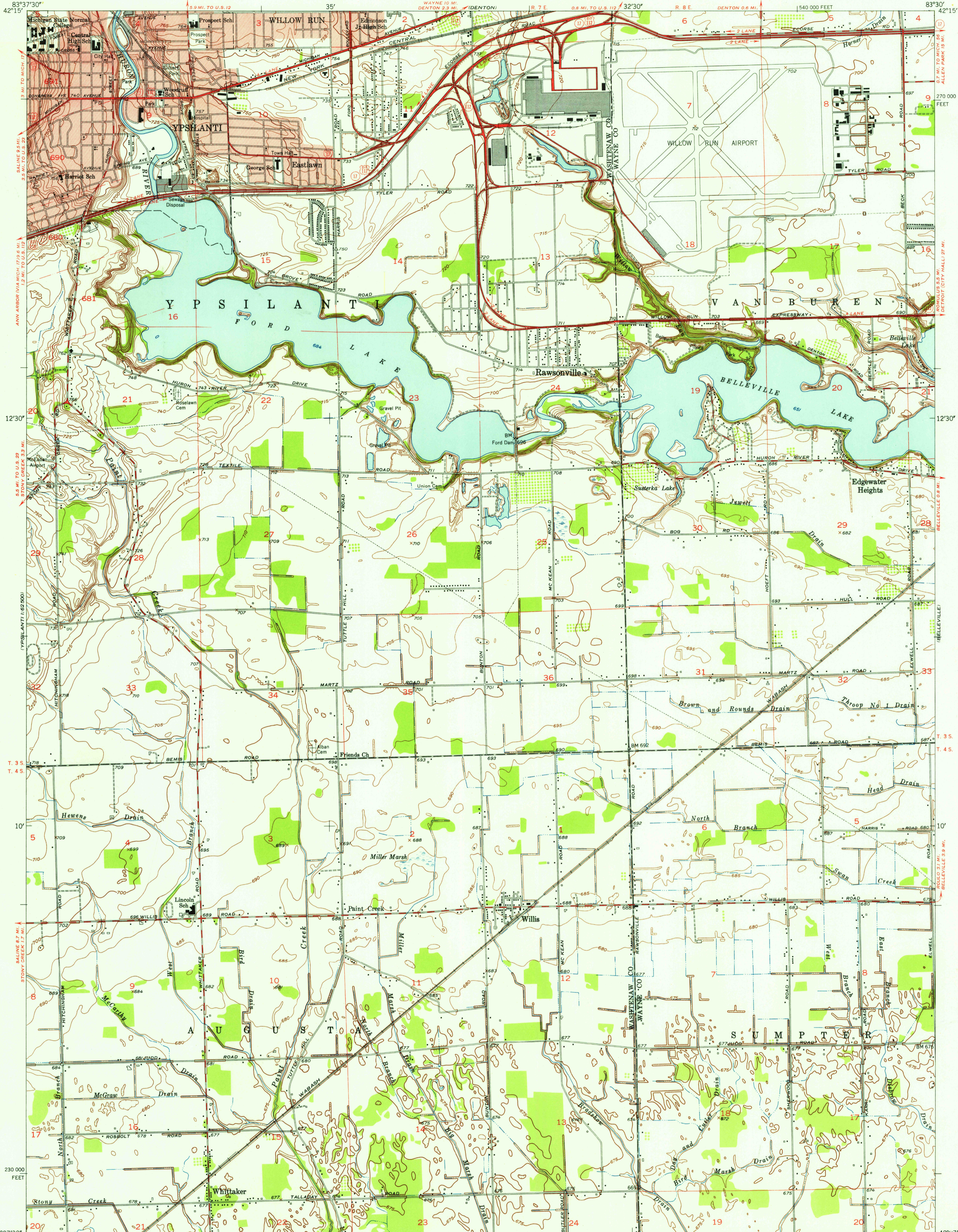
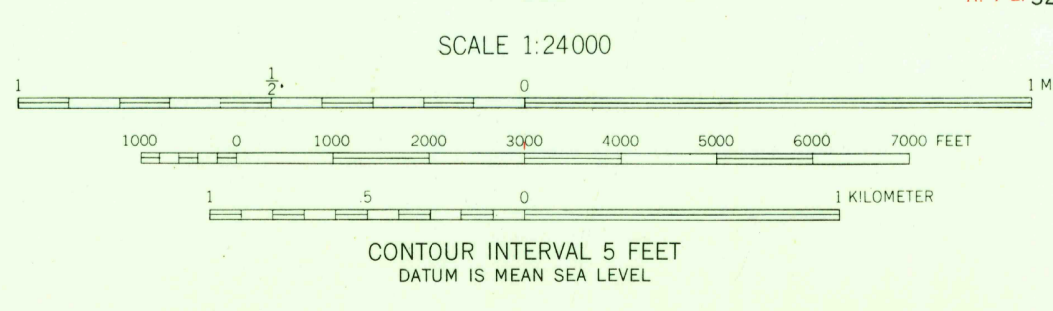


U.S.G.S.
FILE COPY
TOPOGRAPHIC DIVISION



Mapped, edited, and published by the Geological Survey
Control by USGS and USC&GS
Culture and drainage in part compiled from aerial photographs taken 1952. Topography by plane-table surveys 1940 and 1953
Polyconic projection. 1927 North American datum
10,000-foot grid based on Michigan coordinate system, east zone
Red tint indicates areas in which only landmark buildings are shown

APPROXIMATE MEAN DECLINATION, 1953



USGS
Historical File
Topographic Division

ROAD CLASSIFICATION
Heavy-duty ——— 4 LANE 10 LANE Light-duty ———
Medium-duty ——— 4 LANE 10 LANE Unimproved dirt - - - - -
U. S. Route State Route



YPSILANTI EAST, MICH.
NE/4 YPSILANTI 15' QUADRANGLE
N4207.5-W8330/7.5

U.S.G.S.
FILE COPY
TOPOGRAPHIC DIVISION

THIS MAP COMPLIES WITH NATIONAL MAP ACCURACY STANDARDS
FOR SALE BY U. S. GEOLOGICAL SURVEY, WASHINGTON 25, D. C.
A FOLDER DESCRIBING TOPOGRAPHIC MAPS AND SYMBOLS IS AVAILABLE ON REQUEST

1953

JUN 8 1955