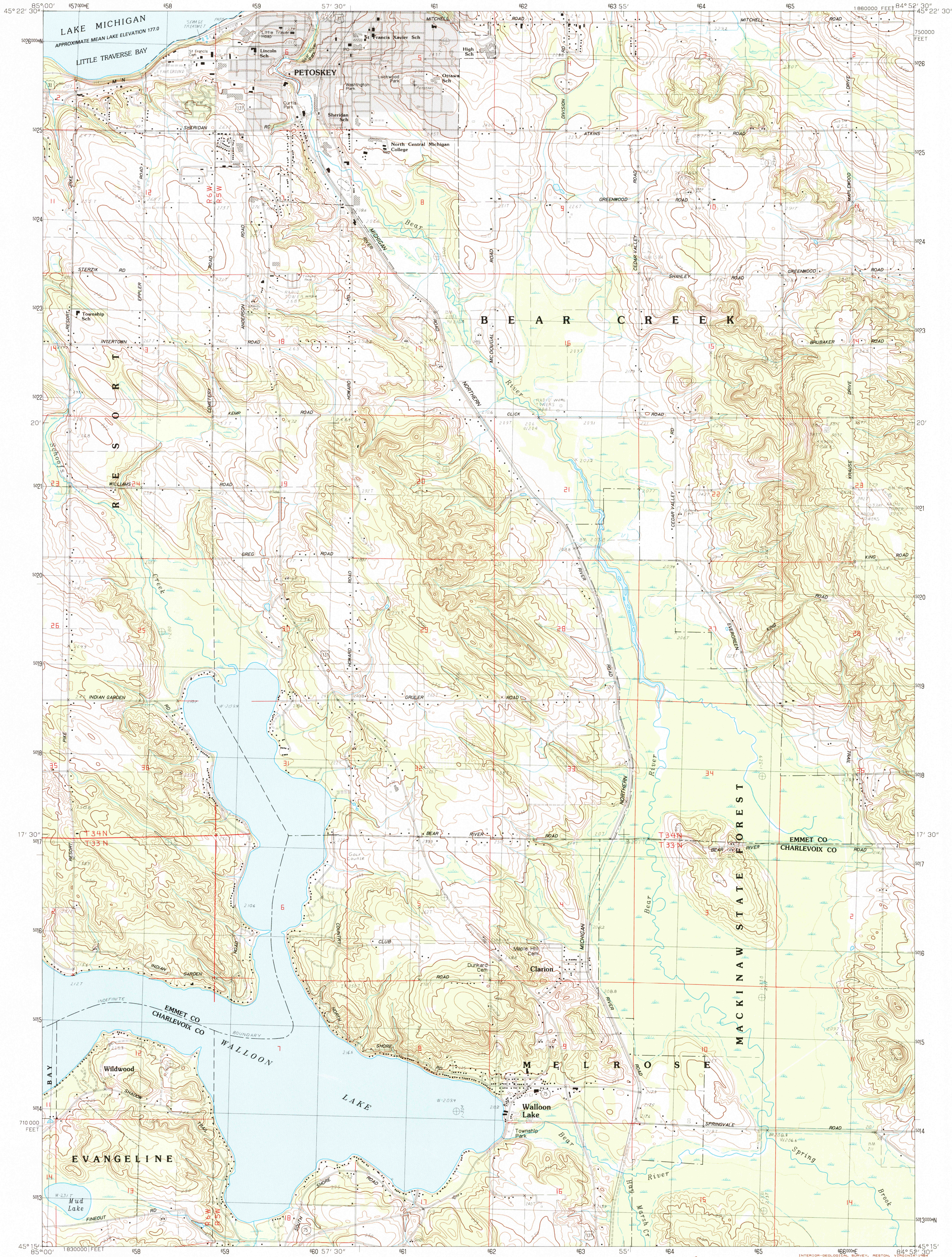


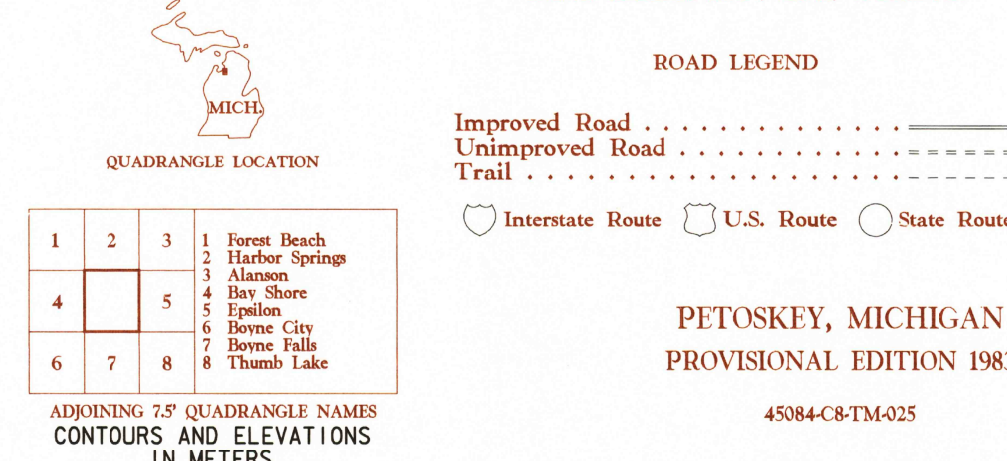
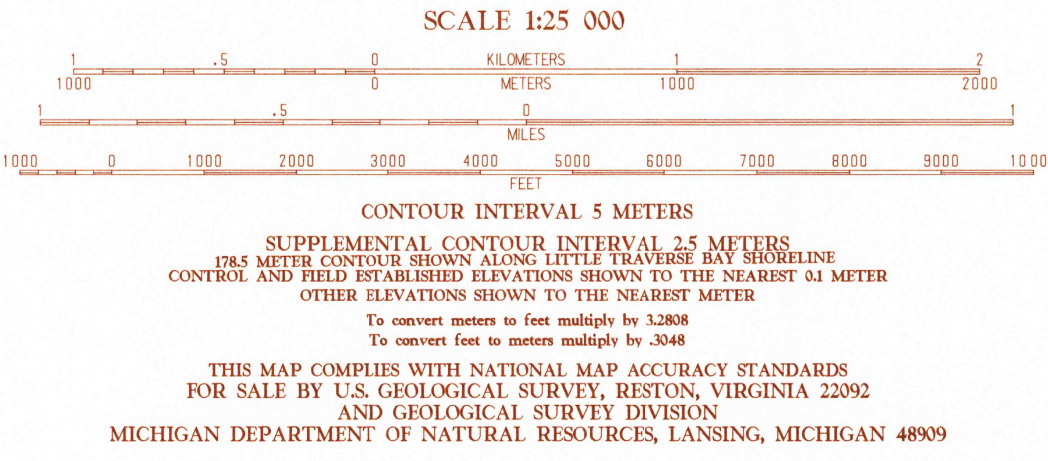
UNITED STATES
DEPARTMENT OF THE INTERIOR
GEOLOGICAL SURVEY

PETOSKEY QUADRANGLE
MICHIGAN
7.5 MINUTE SERIES (TOPOGRAPHIC)



PRODUCED BY THE UNITED STATES GEOLOGICAL SURVEY
CONTROL BY: USGS AND NOS/NOAA
COMPILED FROM AERIAL PHOTOGRAPHS TAKEN: 1978
FIELD CHECKED: 1981. MAP EDITED: 1983
PROJECTION: UNIVERSAL TRANSVERSE MERCATOR
GRID: 1000-METER UNIVERSAL TRANSVERSE MERCATOR
10000-FOOT STATE GRID TICKS: MICHIGAN, CENTRAL ZONE
UTM GRID DECLINATION: 1°28' EAST
1983 MAGNETIC NORTH DECLINATION: 4°30' WEST
VERTICAL DATUM: NATIONAL GEODETIC VERTICAL DATUM OF 1929
HORIZONTAL DATUM: 1927 NORTH AMERICAN DATUM
To place on the predicted North American Datum of 1983,
move the projection lines as shown by dashed corner ticks
(3 meters north and 1 meter east)
There may be private inholdings within the boundaries of any
Federal and State Reservations shown on this map
Gray tint indicates area in which selected buildings are shown

PROVISIONAL MAP
Produced from original
manuscript drawings. Information
shown as of date of
field check. 2



RETURN TO:
USGS AND HISTORICAL MAP ARCHIVE