

Traverse City

MICHIGAN

1:250 000-scale metric
topographic map



1 X 2 DEGREE QUADRANGLE
SHOWING

- Contours and elevations in meters
- Highways, roads and other manmade structures
- Water features
- Woodland areas
- Geographic names



GEOLOGICAL SURVEY

1989

Produced by the United States Geological Survey
Compiled from USGS 1:100 000-scale maps dated 1983
Supersedes map dated 1954. Map edited 1989
North American Datum of 1983 (NAD 83). Projection and
10 000-meter grid: Universal Transverse Mercator, zone 16.
25 000-meter grid ticks: Michigan coordinate system of 1983
(central zone)
The difference between NAD 83 and North America Datum of
1927 (NAD 27) for 7.5 minute intersections is given in USGS
Bulletin 1875
There may be private inholdings within the boundaries of
the National or State reservations shown on this map

1989 MAGNETIC DECLINATION FROM TRUE NORTH VARIES
FROM 4° (7.1 MILS) WESTERLY FOR THE CENTER OF THE
WEST EDGE TO 6° (10.7 MILS) WESTERLY FOR THE CENTER
OF THE EAST EDGE. MEAN ANNUAL CHANGE IS 7.8 WESTERLY

CONTOUR INTERVAL 20 METERS
NATIONAL GEODETIC VERTICAL DATUM OF 1929
ELEVATIONS SHOWN TO THE NEAREST METER

THIS MAP COMPLIES WITH NATIONAL MAP ACCURACY STANDARDS

CONVERSION TABLE			
Meters	Feet	Feet	Meters
1	3.2808	1	3.048
2	6.5617	2	6.096
3	9.8425	3	9.144
4	13.1234	4	12.190
5	16.4042	5	15.240
6	19.6850	6	18.288
7	22.9659	7	21.336
8	26.2467	8	24.384
9	29.5275	9	27.432
10	32.8084	10	30.480
To convert meters to feet multiply by 3.2808			
To convert feet to meters multiply by 0.3048			

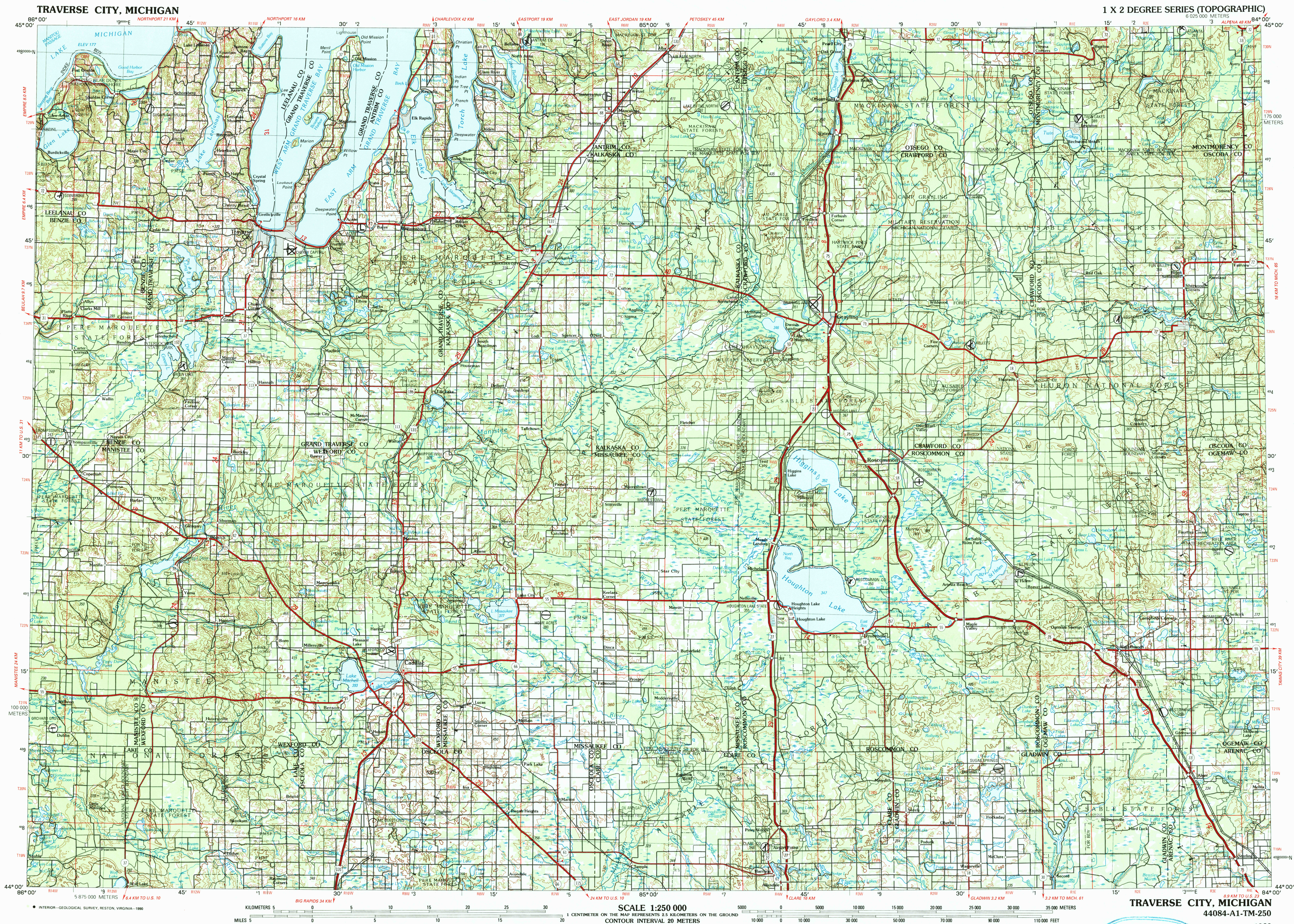
ADJOINING MAPS			
1	2	3	
4		5	
6	7	8	
1 Escanaba 2 Cheboygan 3 Alpena 4 Manistowic 5 Tawas City 6 Milwaukee 7 Midland 8 Flint			

FOR SALE BY U. S. GEOLOGICAL SURVEY
DENVER, COLORADO 80225, OR RESTON, VIRGINIA 22092

Topographic Map Symbols

- Dual highway, interchange
- Primary highway, hard surface
- Secondary highway, hard surface
- Light duty road, hard or improved surface
- Other road; trail
- Route marker: Interstate: U. S.; State
- Bridge: overpass; underpass
- Tunnel: road; railroad
- Railroad: standard gauge; single, multiple track
- Railroad: narrow gauge; single, multiple track
- Build-up area: locality, elevation
- Airport: runway pattern known; unknown
- National boundary
- County boundary
- National or State reservation boundary
- Land grant boundary
- U. S. public lands survey: range, township (surveyed)
- U. S. public lands survey: range, township (ungranted)
- Powerline: pipeline, overhead; underground
- Dam; landmark feature; landmark building
- Well: water, other; spring; tank
- Cave: mine, quarry; oil platform
- Landmark area: landmark tract
- Distorted surface: strip mine, lava; sand
- Contours: index; intermediate; supplementary
- Bathymetric contours: index; primary
- Bathymetric contours: intermediate; supplementary
- Stream, lake, perennial; intermittent
- Rapids, large and small; falls, large and small
- Land subject to controlled inundation; marsh, swamp
- Woodland; orchard; vineyard
- Mangrove

Figures in red denote approximate distances in kilometers between markers
A pamphlet describing topographic maps is available on request



1 X 2 DEGREE SERIES (TOPOGRAPHIC)

TRAVERSE CITY, MICHIGAN
44084-A1-TM-250

1989

