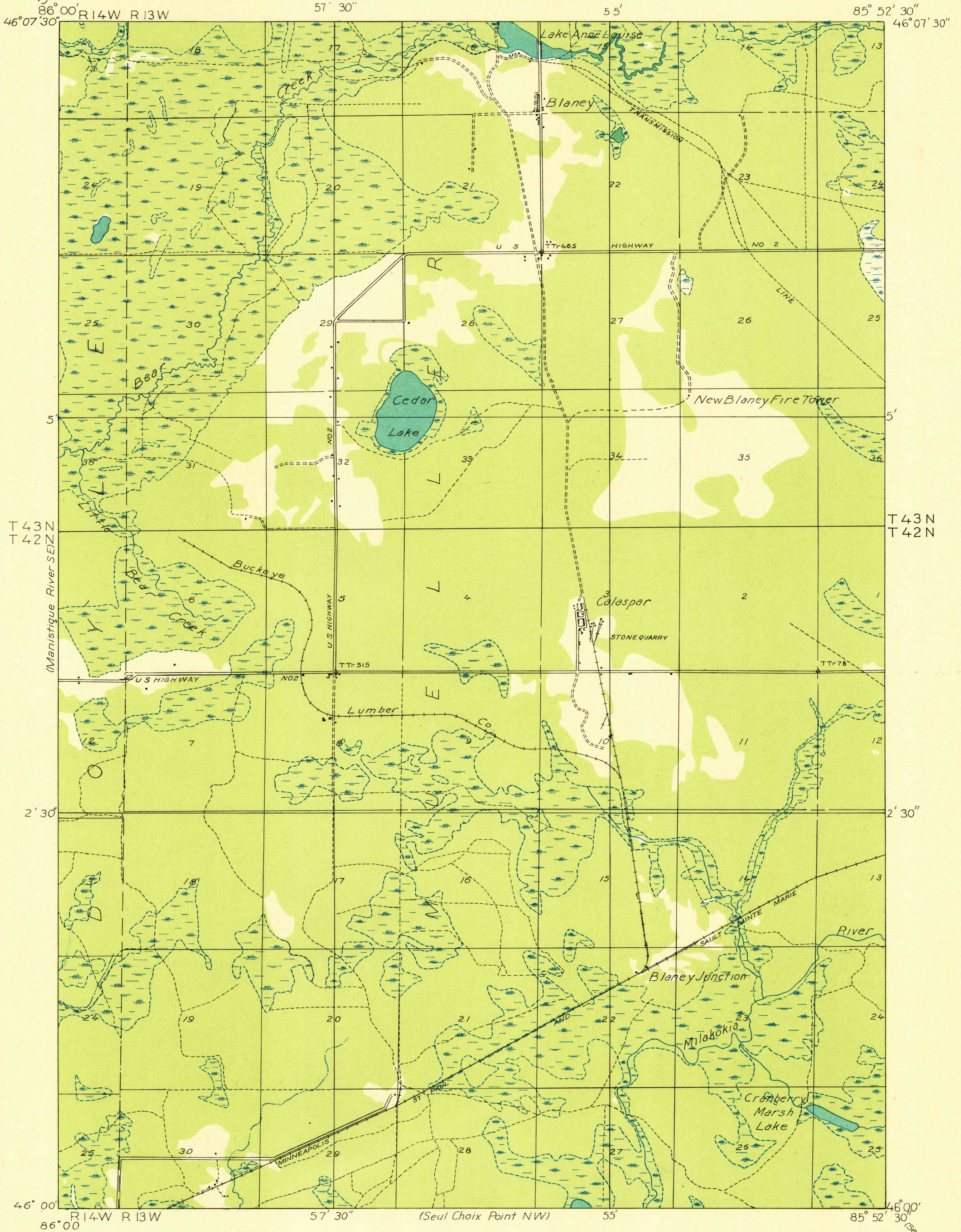


DEPARTMENT OF THE INTERIOR
U. S. GEOLOGICAL SURVEY

STATE OF MICHIGAN
DEPARTMENT OF CONSERVATION
GEO. R. HOGARTH, DIRECTOR
GEOLOGICAL SURVEY DIVISION, R. A. SMITH, STATE GEOLOGIST

MICHIGAN
BLANEY QUADRANGLE
SW QUARTER

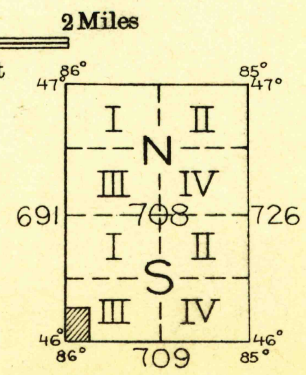
Advance sheet
Subject to correction



Glenn S. Smith, Division Engineer
Compiled in part from aerial photographs
taken by Air Corps, U. S. Army
Control by U. S. Geological Survey
Surveyed in 1931



TRUE NORTH
MAGNETIC NORTH
APPROXIMATE MEAN
DECLINATION, 1931



USGS
Historical File
Topographic Division

BLANEY, MICH
SW

Polyconic projection. North American datum

(Manistique)

(Sault Ste. Marie)