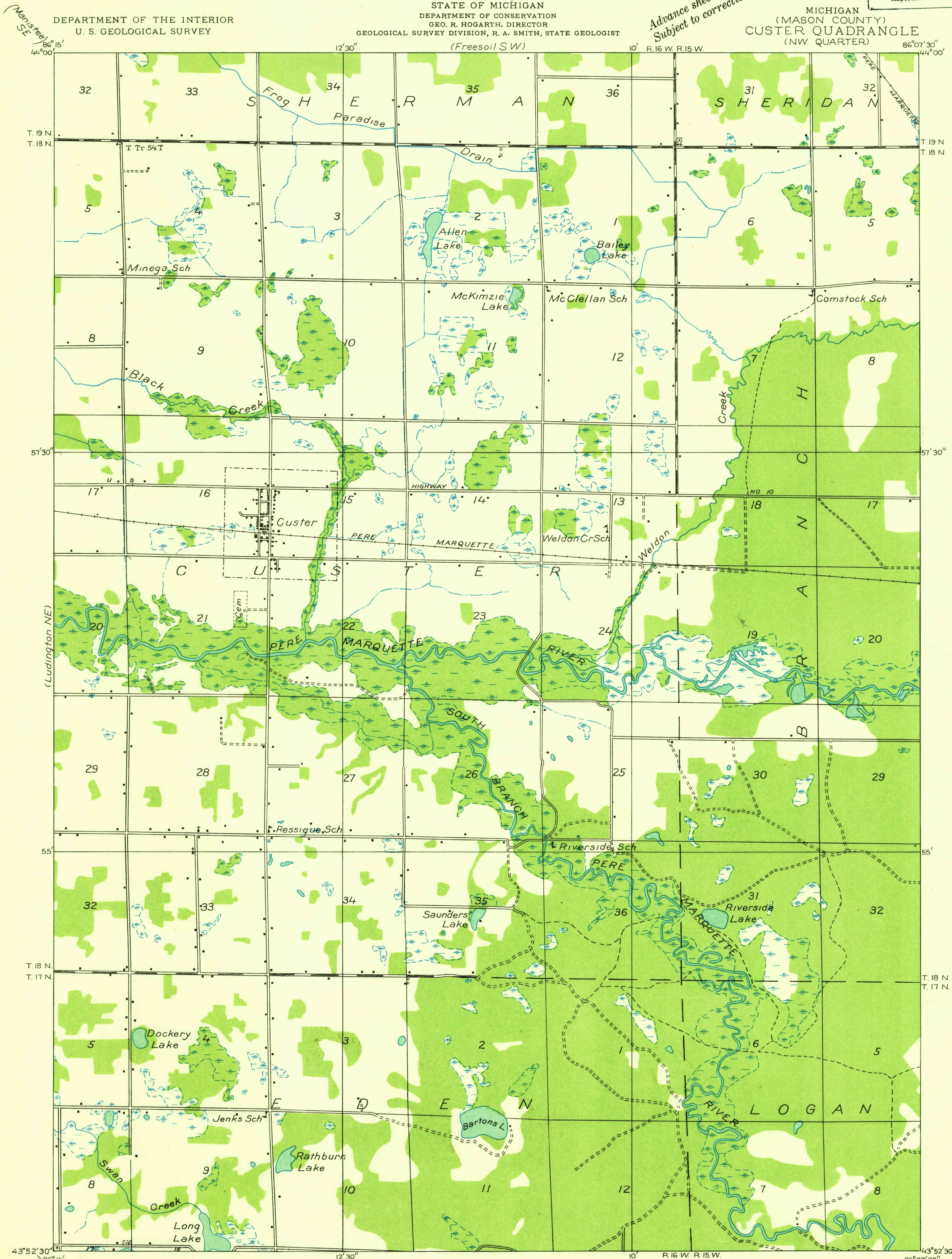


DEPARTMENT OF THE INTERIOR  
U. S. GEOLOGICAL SURVEY

STATE OF MICHIGAN  
DEPARTMENT OF CONSERVATION  
GEO. R. HOGARTH, DIRECTOR  
GEOLOGICAL SURVEY DIVISION, R. A. SMITH, STATE GEOLOGIST

MICHIGAN  
(MASON COUNTY)  
CUSTER QUADRANGLE  
(NW QUARTER)

Advance sheet.  
Subject to correction.



Glenn S. Smith, Division Engineer  
Compiled by U. S. Geological Survey after field examination  
of aerial photographs taken by Air Corps, U. S. Army  
Control by U. S. Geological Survey  
Field examination in 1931

Polyconic projection. North American datum

USGS  
Historical File  
Topographic Division

CUSTER, MICH.  
(NW)