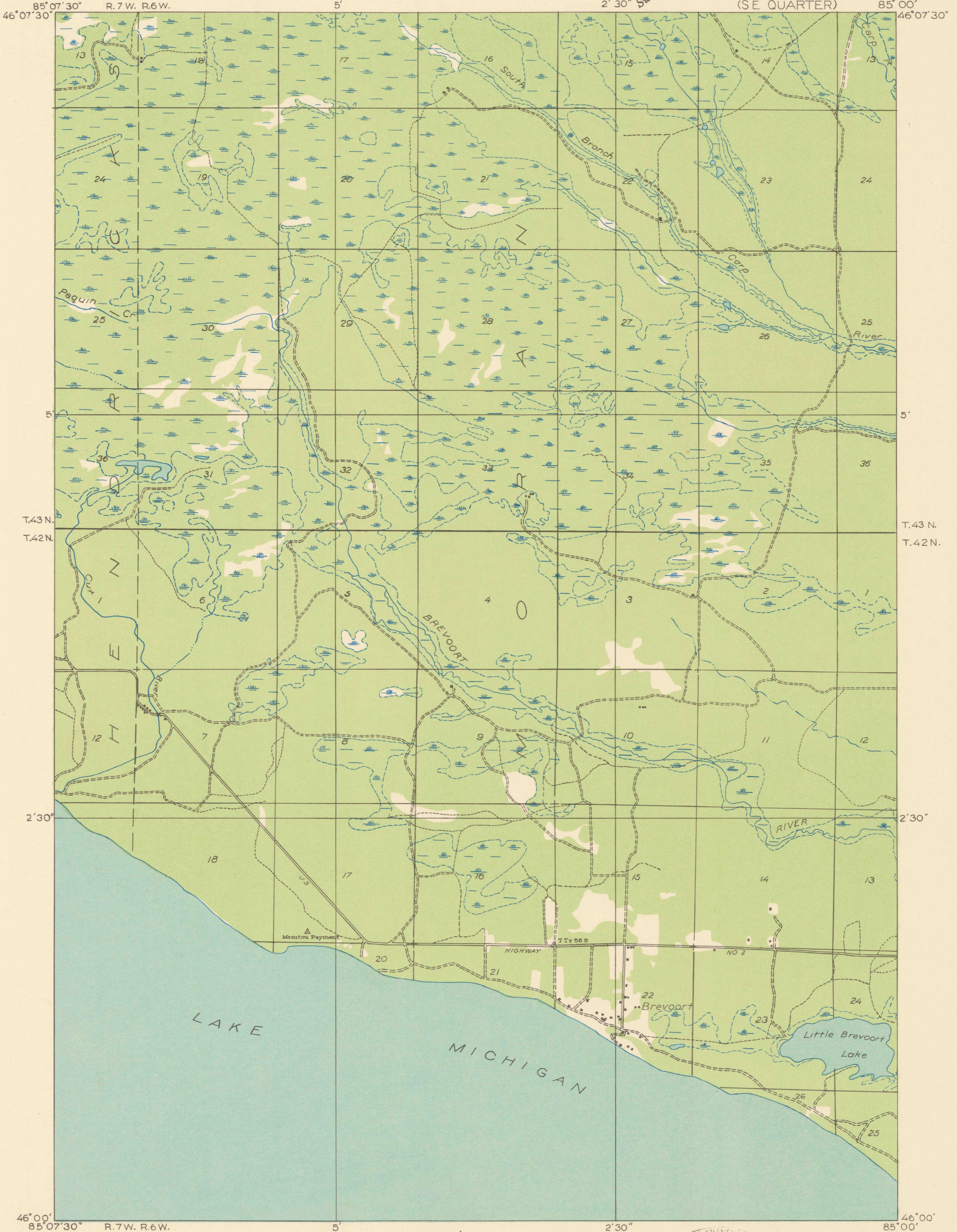


DEPARTMENT OF THE INTERIOR
U. S. GEOLOGICAL SURVEY
R. 7 W. R. 6 W.

STATE OF MICHIGAN
DEPARTMENT OF CONSERVATION
GEO. R. HOGARTH, DIRECTOR
GEOLOGICAL SURVEY DIVISION, R. A. SMITH, STATE GEOLOGIST

MICHIGAN
(MACKINAC COUNTY)
EPOUFETTE QUADRANGLE
(SE QUARTER)

Advance sheet.
Subject to correction.

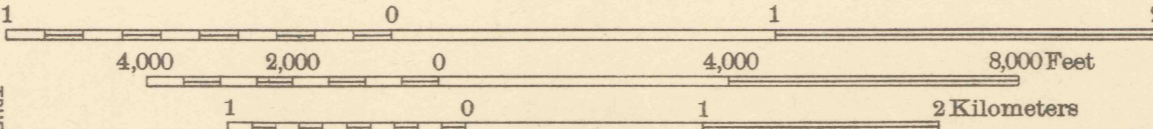


Glenn S. Smith, Division Engineer
Compiled in part from aerial photographs
taken by Air Corps, U. S. Army
Control by U. S. Geological Survey and
U. S. Lake Survey
Surveyed in 1931

TRUE NORTH
MAGNETIC NORTH

APPROXIMATE MEAN
DECLINATION, 1981

Scale 1:25,000



RECEIVED
AUG 15 1932
Map Information Office

EPOUFETTE, MICH.
SE