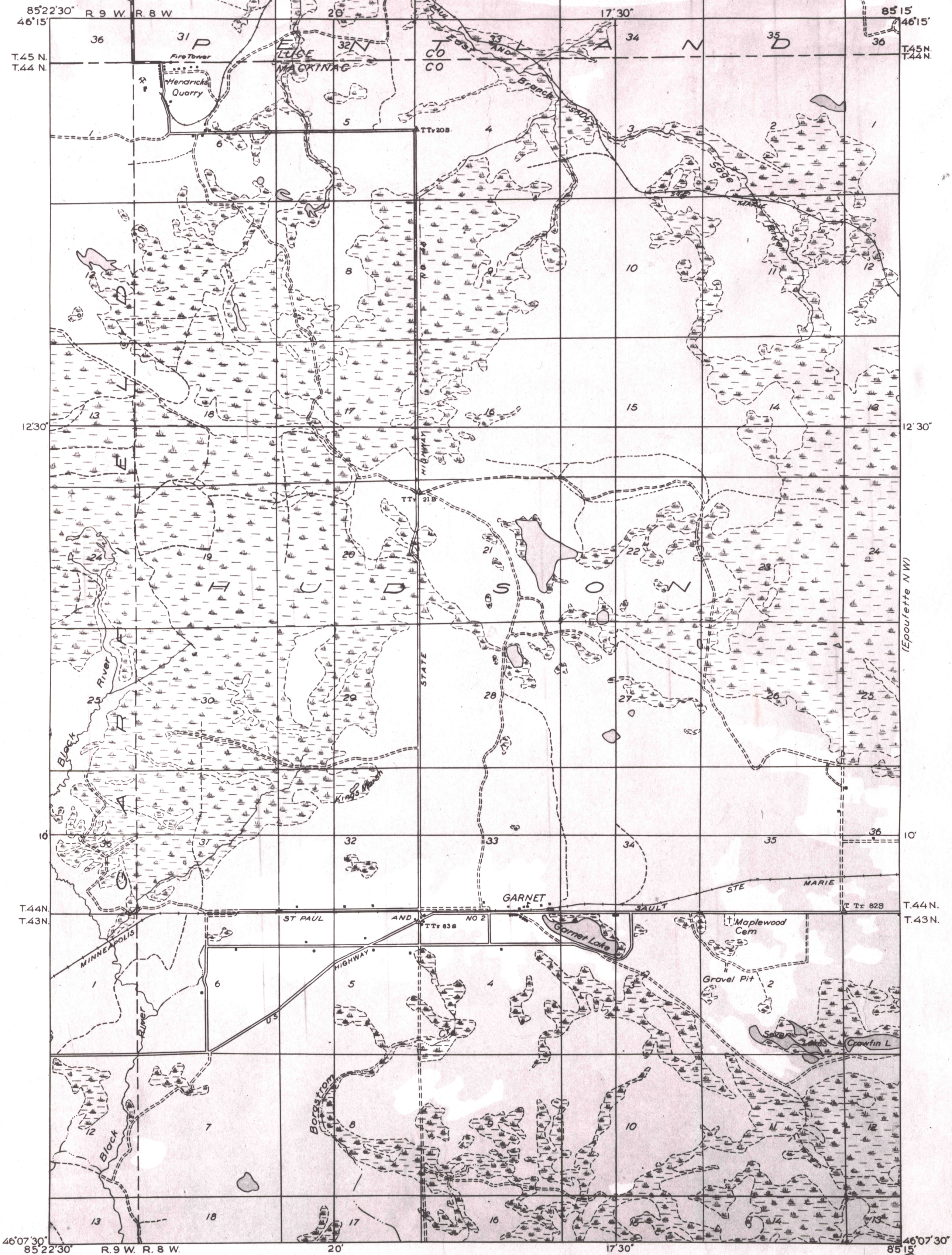


DEPARTMENT OF THE INTERIOR
U. S. GEOLOGICAL SURVEY

STATE OF MICHIGAN
DEPARTMENT OF CONSERVATION
GEO. R. HOGARTH, DIRECTOR
GEOLOGICAL SURVEY DIVISION,
R. A. SMITH, STATE GEOLOGIST

MICHIGAN
GILCHRIST QUADRANGLE
NE QUARTER

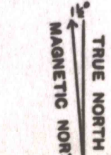
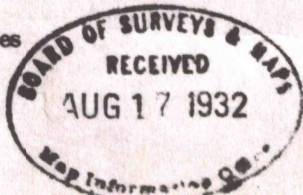
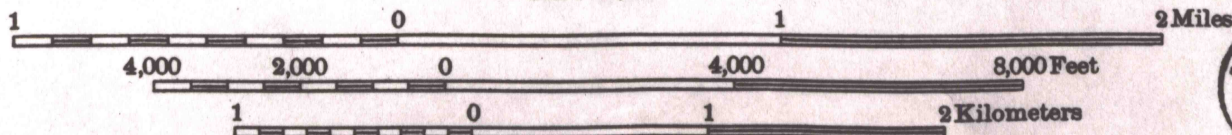
Advance sheet
Subject to correction



Glenn S. Smith, Division Engineer
Compiled in part from aerial photographs
taken by Air Corps, U. S. Army
Control by U. S. Geological Survey
Surveyed in 1931

Polyconic projection. North American datum

Scale 31,680



APPROXIMATE MEAN
DECLINATION, 1931

FILE COPY
MAP INFORMATION OFFICE

GILCHRIST, MICH.
NE