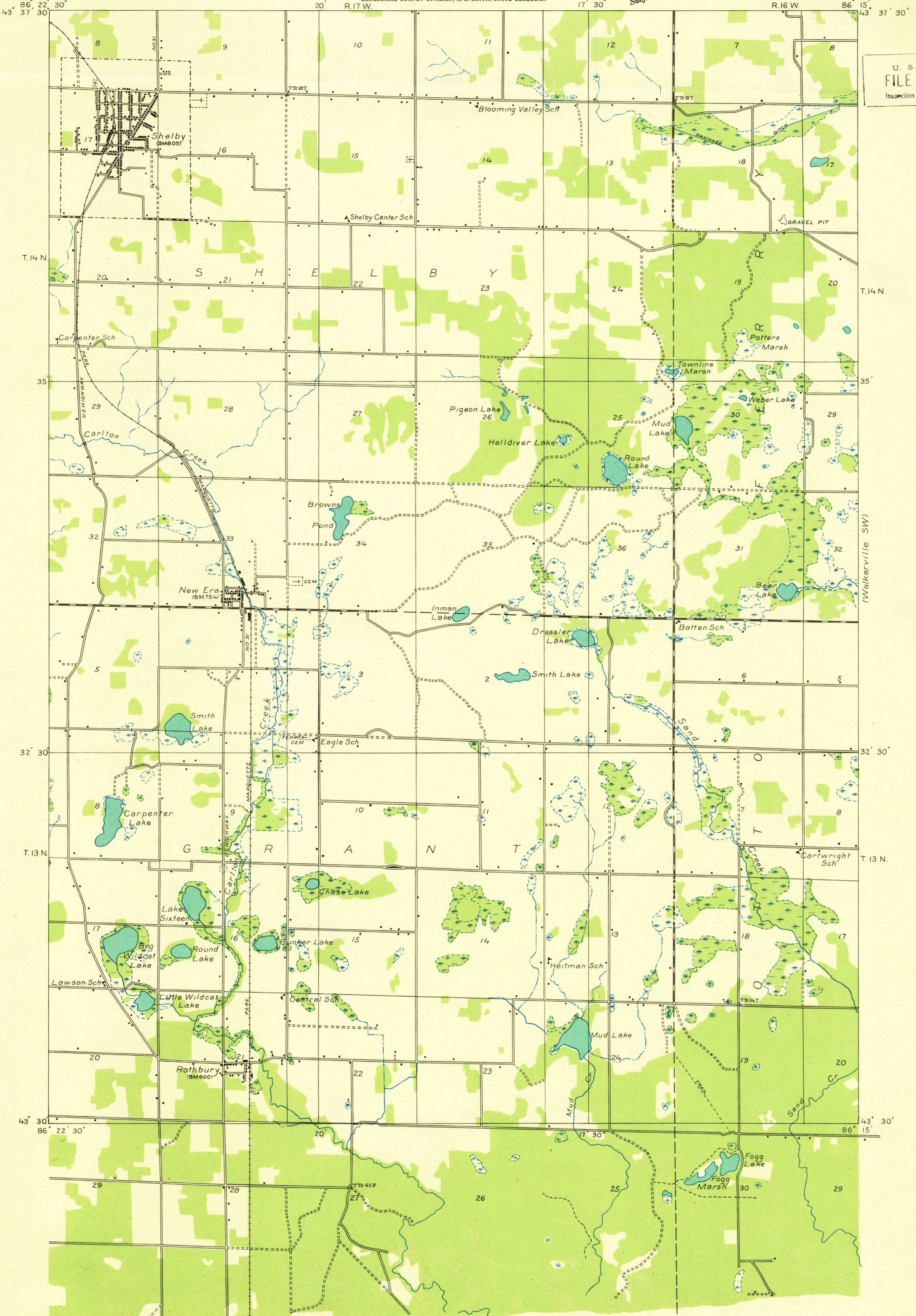
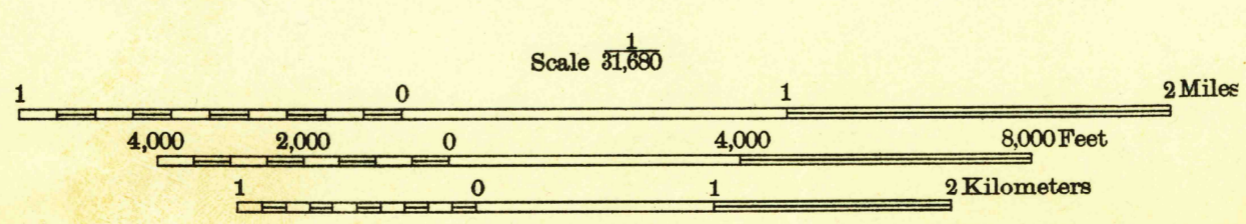


U. S. G. S.
FILE COPY
Inspection and Editing



Glenn S. Smith, Division Engineer
Compiled in part from aerial photographs
taken by Air Corps, U. S. Army
Control by U. S. Geological Survey
Surveyed in 1931

TRUE NORTH
MAGNETIC NORTH
APPROXIMATE MEAN
DECLINATION, 1931



USGS
Historical File
Topographic Division

HART, MICH.
(SE QUARTER)