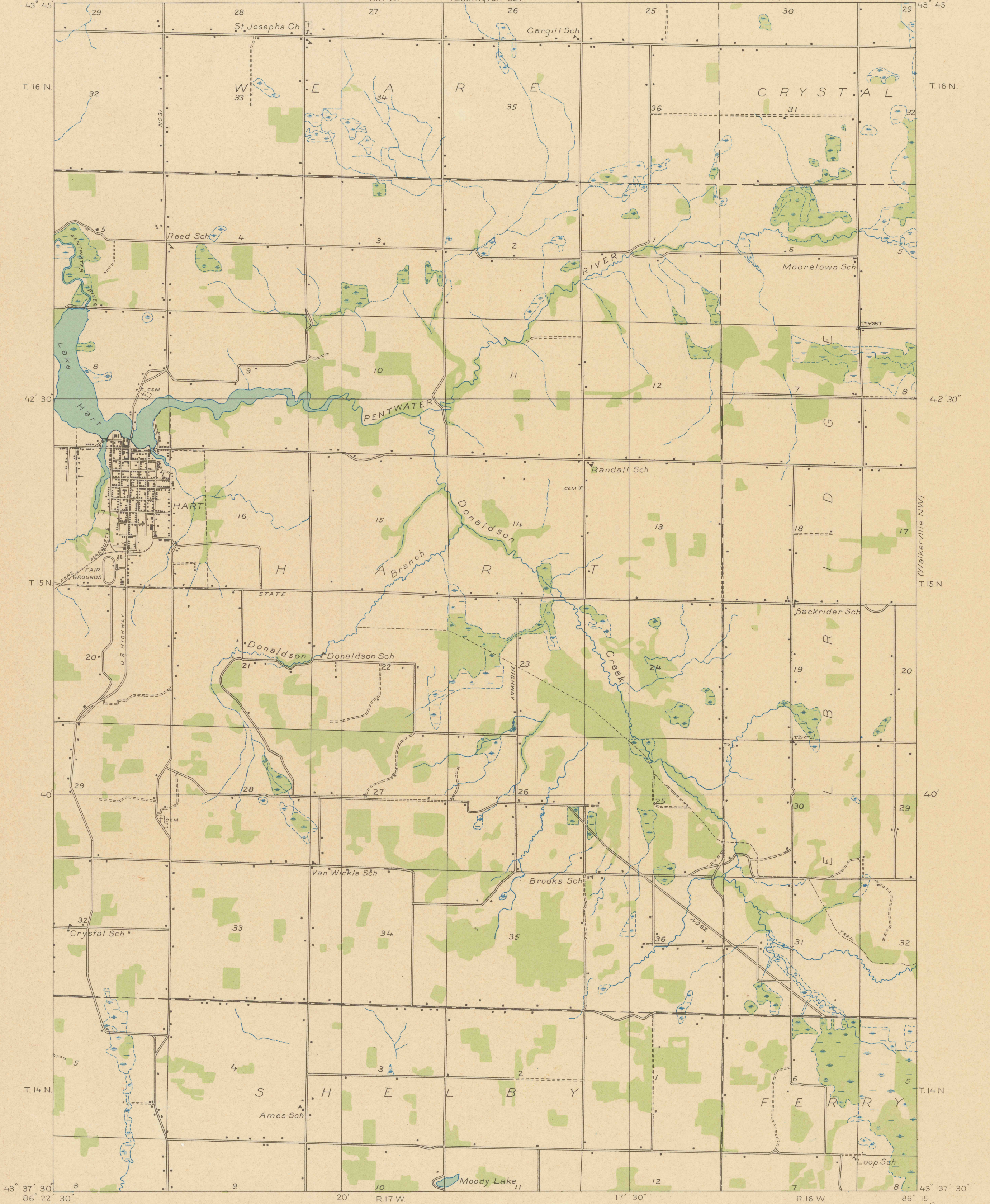


DEPARTMENT OF THE INTERIOR
U. S. GEOLOGICAL SURVEY

STATE OF MICHIGAN
DEPARTMENT OF CONSERVATION
GEO. R. HOGARTH, DIRECTOR
GEOLOGICAL SURVEY DIVISION, R. A. SMITH, STATE GEOLOGIST
(Ludington SE)

Advance sheet
Subject to correction

MICHIGAN
(OCEANA COUNTY)
HART QUADRANGLE
(NE QUARTER)



Glenn S. Smith, Division Engineer
Compiled in part from aerial photographs
taken by Air Corps, U. S. Army
Control by U. S. Geological Survey
Surveyed in 1931

TRUE NORTH
MAGNETIC NORTH
APPROXIMATE MEAN
DECLINATION, 1981

Scale 1:800
1 0 1 2 Miles
4,000 2,000 0 4,000 8,000 Feet
1 0 1 2 Kilometers

HART, MICH.
(NE QUARTER)