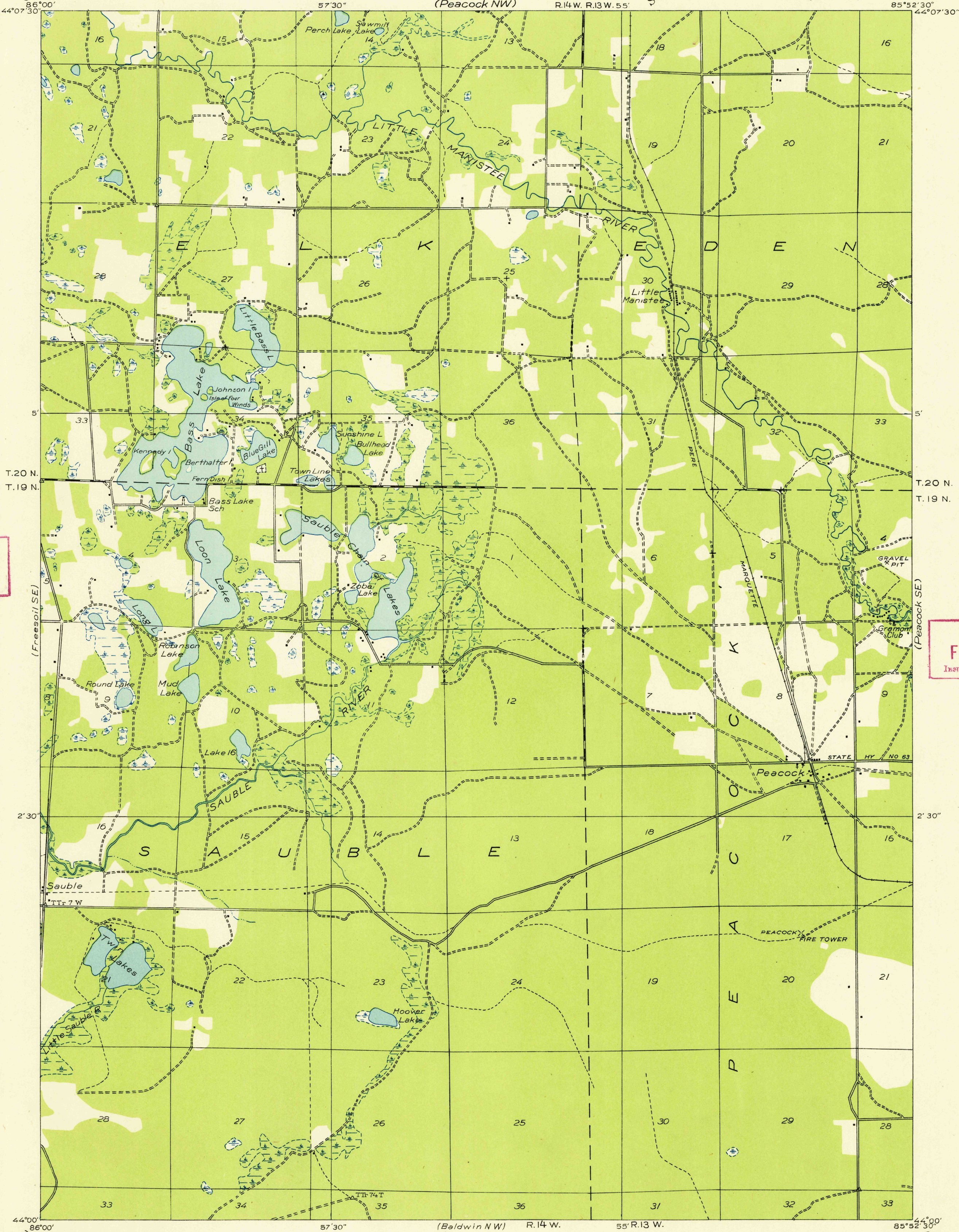


Advance sheet
Subject to correction

(Freesoil NE)
86°00'
44°07'30"

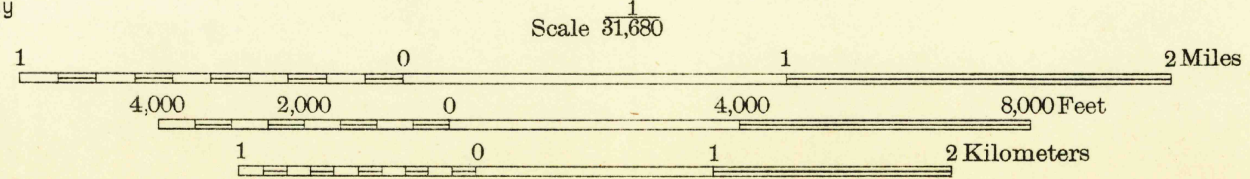
(Peacock NE)
85°52'30"
44°07'30"



U. S. G. S.
FILE COPY
Inspection and Editing.

U. S. G. S.
FILE COPY
Inspection and Editing.

Glenn S. Smith, Division Engineer
Compiled by U. S. Geological Survey after field examination
of aerial photographs taken by Air Corps, U. S. Army
Control by U. S. Geological Survey
Field examination in 1931 and 1933



Polyconic projection. North American datum

TRUE NORTH
MAGNETIC NORTH

U. S. G. S.
Historic File
Topographic Division
Inspection and Editing.

APPROXIMATE MEAN
DECLINATION, 1933

PEACOCK, MICH.
(S.W.)

APR 12 1948