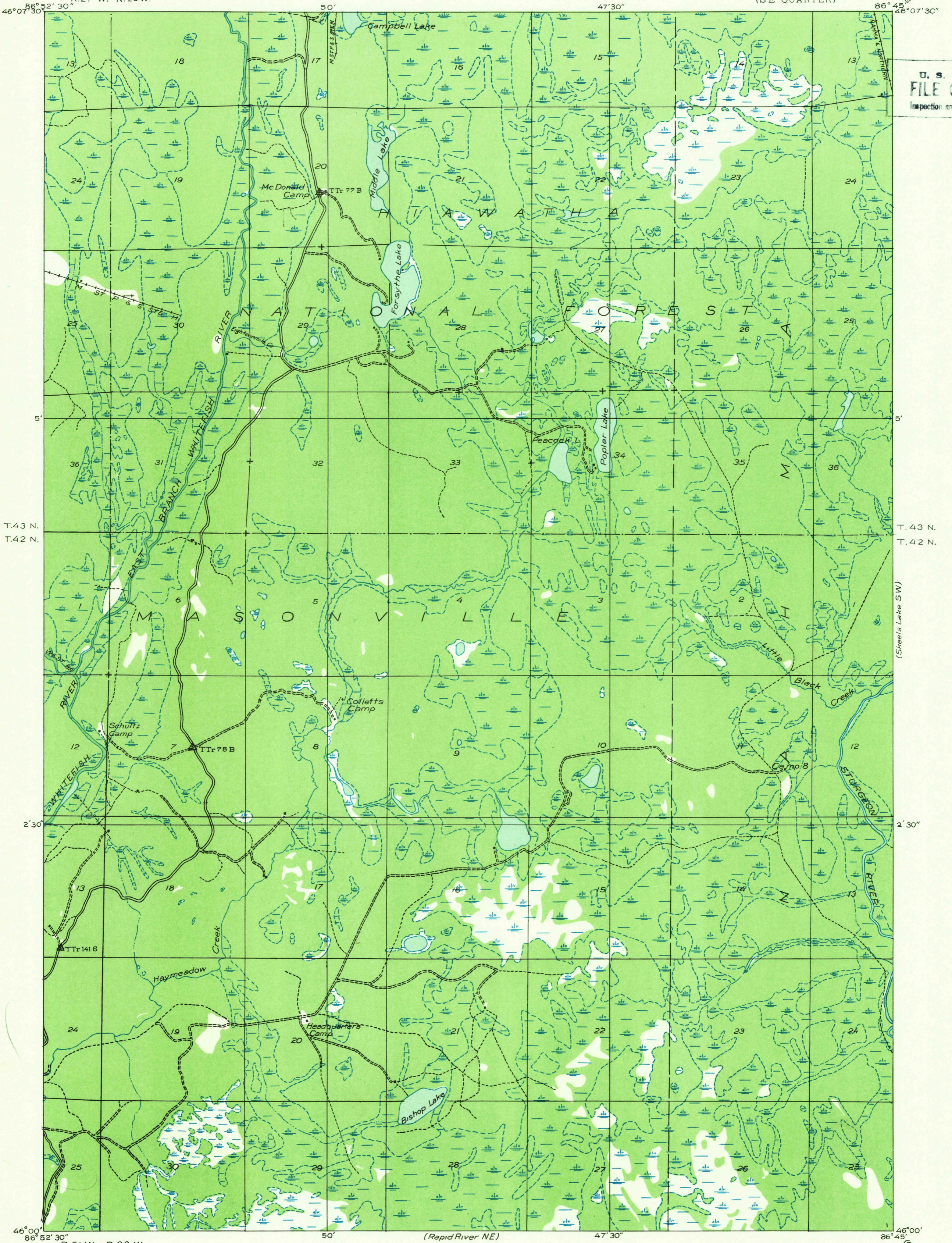
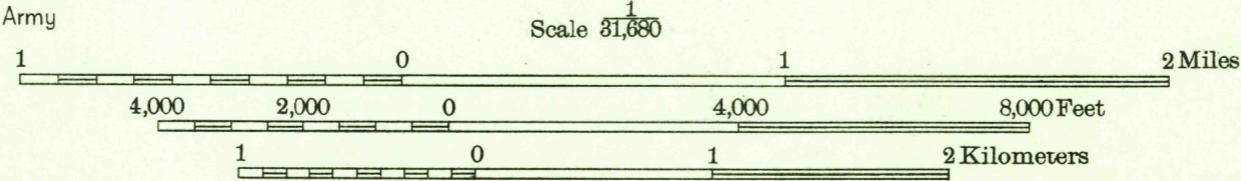


Advance sheet  
Subject to correction

U. S. G. S.  
FILE COPY  
Inspection and Editing



R. 21 W. R. 20 W.  
Glenn S. Smith, Division Engineer  
Compiled by U. S. Geological Survey after field examination  
of aerial photographs taken by Air Corps, U. S. Army  
Control by U. S. Geological Survey  
Field examination in 1932



Polyconic projection. North American datum

USGS  
Historical File  
Topographic Division

APPROXIMATE MEAN  
DECLINATION, 1932

TRENARY, MICH.  
(SE)

(Rapid River N.W.)

(Skeels Lake NW)  
(Skeels Lake SW)  
(Garden NW)