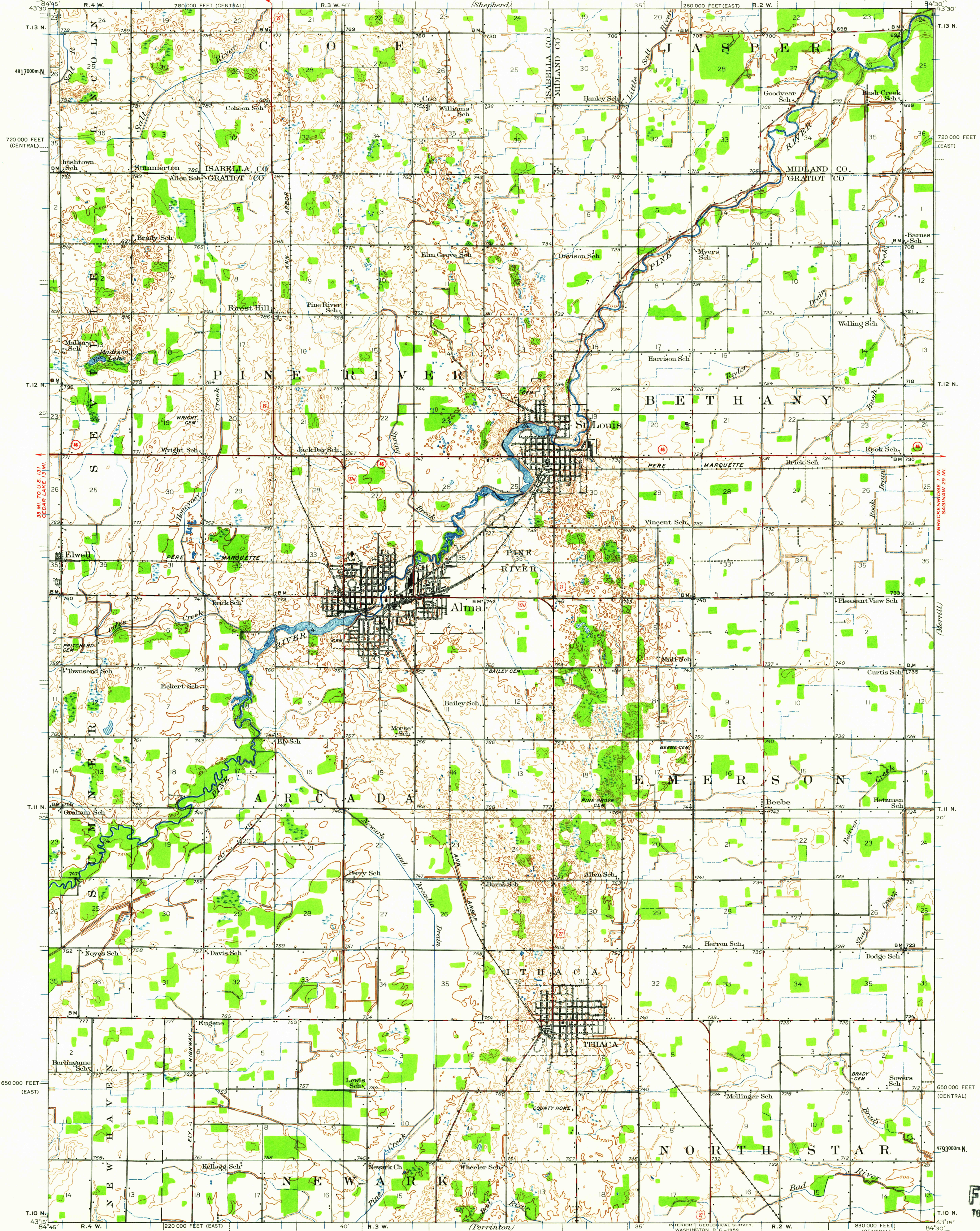


UNITED STATES  
DEPARTMENT OF THE INTERIOR  
GEOLOGICAL SURVEY

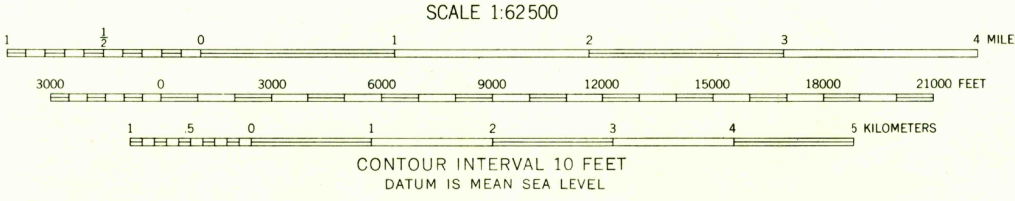
MOUNT PLEASANT 12 MI.  
SHEPHERD 1.8 MI.

MICHIGAN  
ALMA QUADRANGLE



Topography by W.S. Gehres, D.R. Cabaniss, R.K. Kenerson, C.E. Dow, N.J. Bingman, H.J. Owen, M.M. Stambaugh, and LeGrand J. Smith  
Control by U.S. Geological Survey and U.S. Coast and Geodetic Survey  
Surveyed in 1934 and 1935

USGS  
Historical File  
Topographic Division



ROAD CLASSIFICATION  
Heavy-duty ——— Light-duty ———  
Medium-duty ——— Unimproved dirt ———  
U.S. Route      State Route

Polyconic projection. 1927 North American datum  
10,000-foot grids based on Michigan (East) and Michigan (Central) rectangular coordinate systems  
1000-meter Universal Transverse Mercator grid ticks, zone 16, shown in blue

ALMA, MICH.  
N 4315-W 8430/15  
1935

FOR SALE BY U.S. GEOLOGICAL SURVEY, WASHINGTON 25, D. C.  
A FOLDER DESCRIBING TOPOGRAPHIC MAPS AND SYMBOLS IS AVAILABLE ON REQUEST

U.S.G.S.  
FILE COPY  
TOPOGRAPHIC DIVISION

DEC 22 1950  
1420