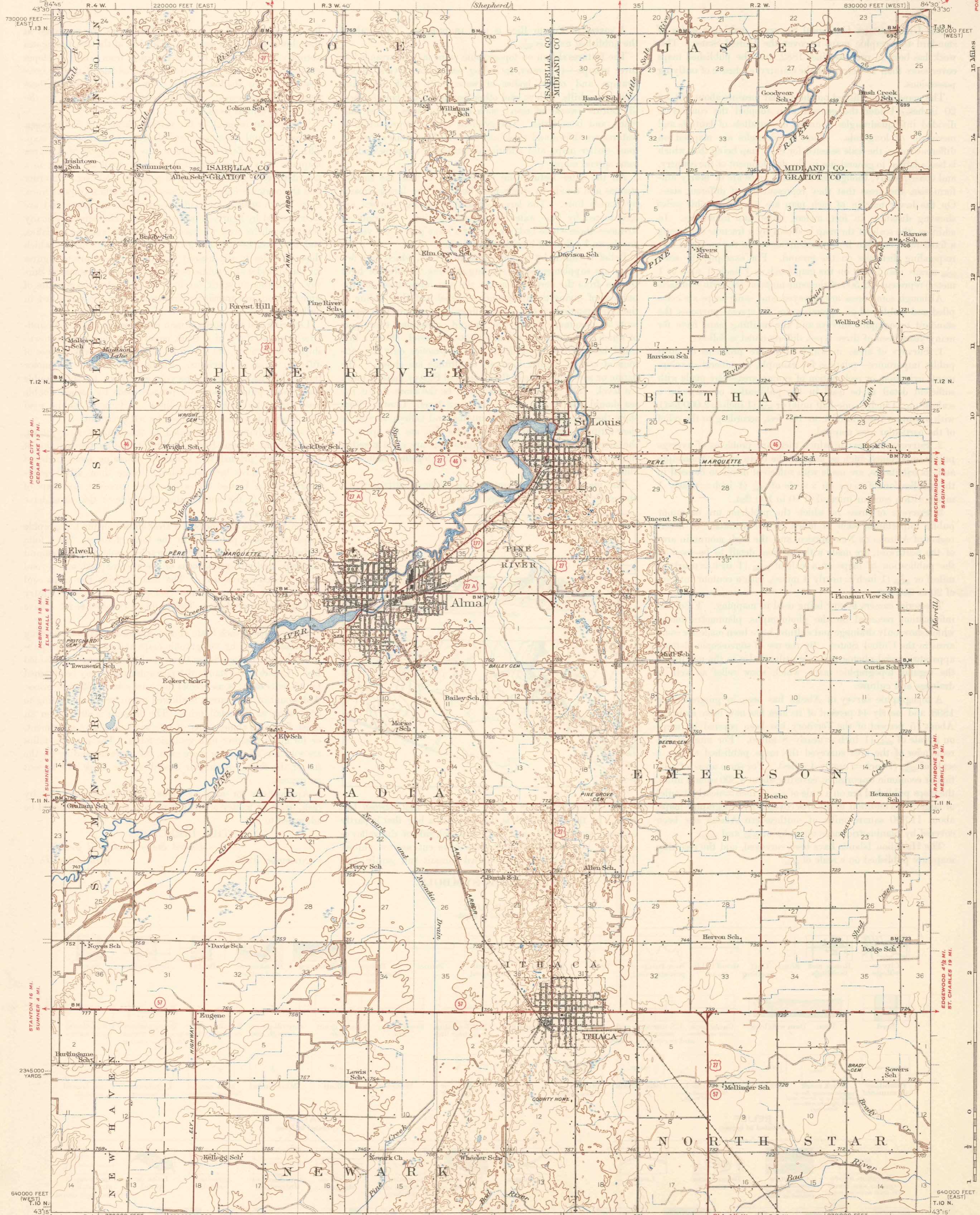


UNITED STATES
DEPARTMENT OF THE INTERIOR
GEOLOGICAL SURVEY

MICHIGAN
ALMA QUADRANGLE



Topography by W.S. Gehres, D.R. Cabaniss,
R.K. Kenerson, C.E. Dow, N.J. Bingman, H.J. Owen,
M.M. Stambaugh, and LeGrand J. Smith
Surveyed in 1934 and 1935

Scale 62500
0 1 2 3 4 Miles
0 5000 10000 15000 20000 Feet
0 1 2 3 4 5 Kilometers

Polyconic projection, North American datum
5000 yard grid based on U.S. zone system, B
10000 foot grids based on Michigan (East)
and Michigan (West) rectangular
coordinate systems

Contour interval 10 feet.
Datum is mean sea level.

HARD IMPERVIOUSLY SURFACED ROADS
OTHER MAIN TRAVELED ROADS
1937
UNITED STATES ROUTE NUMBER
STATE ROUTE NUMBER

ALMA, MICH.
Edition of 1938