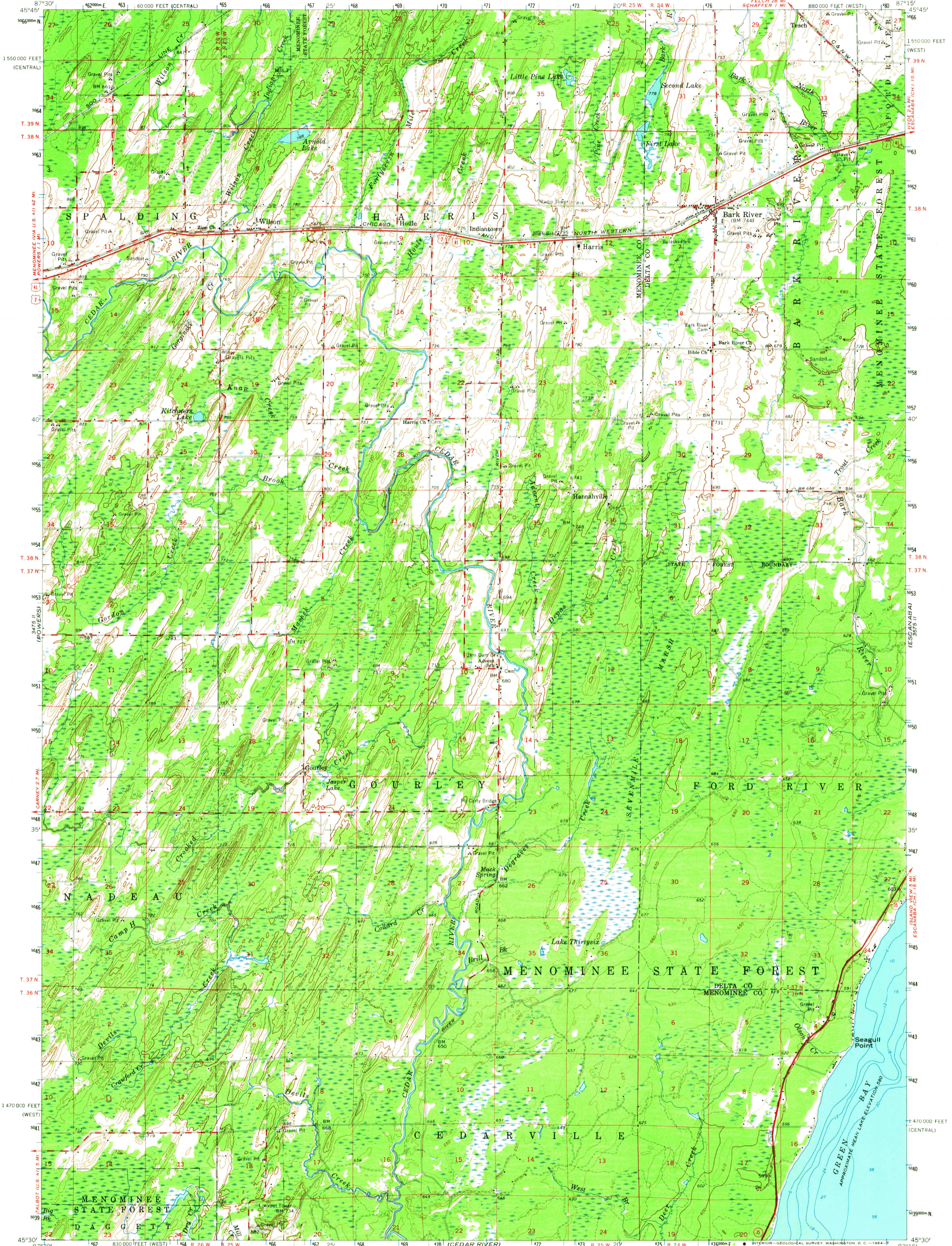


UNITED STATES  
DEPARTMENT OF THE INTERIOR  
GEOLOGICAL SURVEY

BARK RIVER QUADRANGLE  
MICHIGAN  
15 MINUTE SERIES (TOPOGRAPHIC)



Mapped, edited, and published by the Geological Survey

Control by USGS and USC&GS

Topography by photogrammetric methods from aerial photographs taken 1954. Field checked 1963

Selected hydrographic data compiled from U. S. Lake Survey Chart 702 (1960). This information is not intended for navigational purposes

Polyconic projection. 1927 North American datum

10,000-foot grids based on Michigan coordinate system, west and central zones

1000-meter Universal Transverse Mercator grid ticks, zone 16, shown in blue



CONTOUR INTERVAL 20 FEET

DOTTED LINES REPRESENT 10-FOOT CONTOURS

DATUM IS MEAN SEA LEVEL

DEPTH CURVES AND SOUNDINGS IN FEET—DATUM IS LOW WATER 578.5 FEET

USGS Historical File Topographic Division

ROAD CLASSIFICATION	
Heavy duty	Light-duty
Unimproved dirt	U.S. Route
	State Route



BARK RIVER, MICH.  
N4530—W8715/15

1963

AMS 3575 III—SERIES V762

OCT 2 1964

U.S.G.S. 2695

FILE COPY  
TOPOGRAPHIC DIVISION