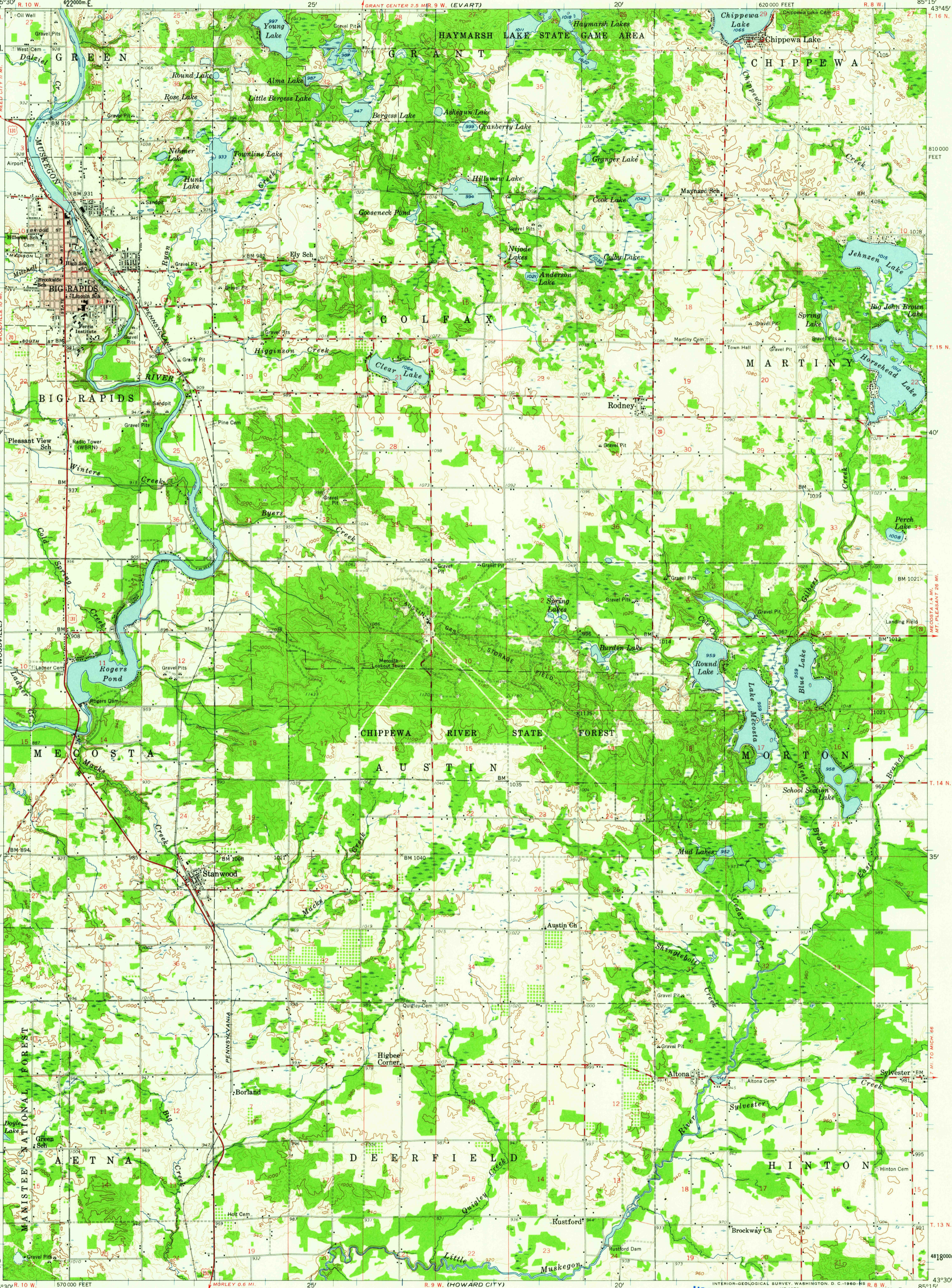


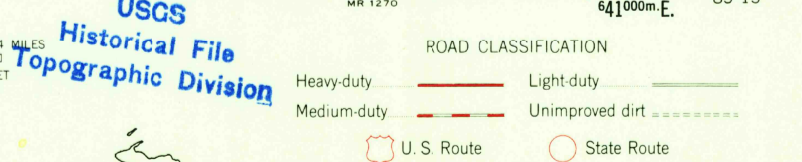
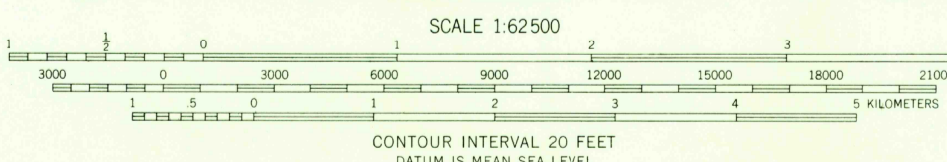
FREE CITY

85°30' R. 10 W. 622000m E.
43°45' T. 16 N.
4844000m N.
CADILLAC 40 MI. W. FREE CITY 11 MI.
WHITE CLOUD 22 MI. WOODVILLE 10 MI.
WOODVILLE
T. 15 N.
40'
Pleasant View Sch.
Winters
Rogers Pond
Mecosta
T. 14 N.
35'
730 000 FEET
T. 13 N.
43°30' R. 10 W. 570 000 FEET
SAND LAKE



Mapped, edited, and published by the Geological Survey
Control by USGS and USCGS
Topography from aerial photographs by photogrammetric methods
Aerial photographs taken 1954-1955. Field check 1958
Polyconic projection. 1927 North American datum
10,000-foot grid based on Michigan coordinate system, central zone
1000-meter Universal Transverse Mercator grid ticks,
zone 16, shown in blue
Red tint indicates areas in which only
landmark buildings are shown
Dashed land lines indicate approximate locations

APPROXIMATE MEAN
DECLINATION, 1958



THIS MAP COMPLIES WITH NATIONAL MAP ACCURACY STANDARDS
FOR SALE BY U. S. GEOLOGICAL SURVEY, WASHINGTON 25, D. C.
A FOLDER DESCRIBING TOPOGRAPHIC MAPS AND SYMBOLS IS AVAILABLE ON REQUEST

BIG RAPIDS, MICH.
N4330—W8515/15
1958

JAN 12 1960

2420