

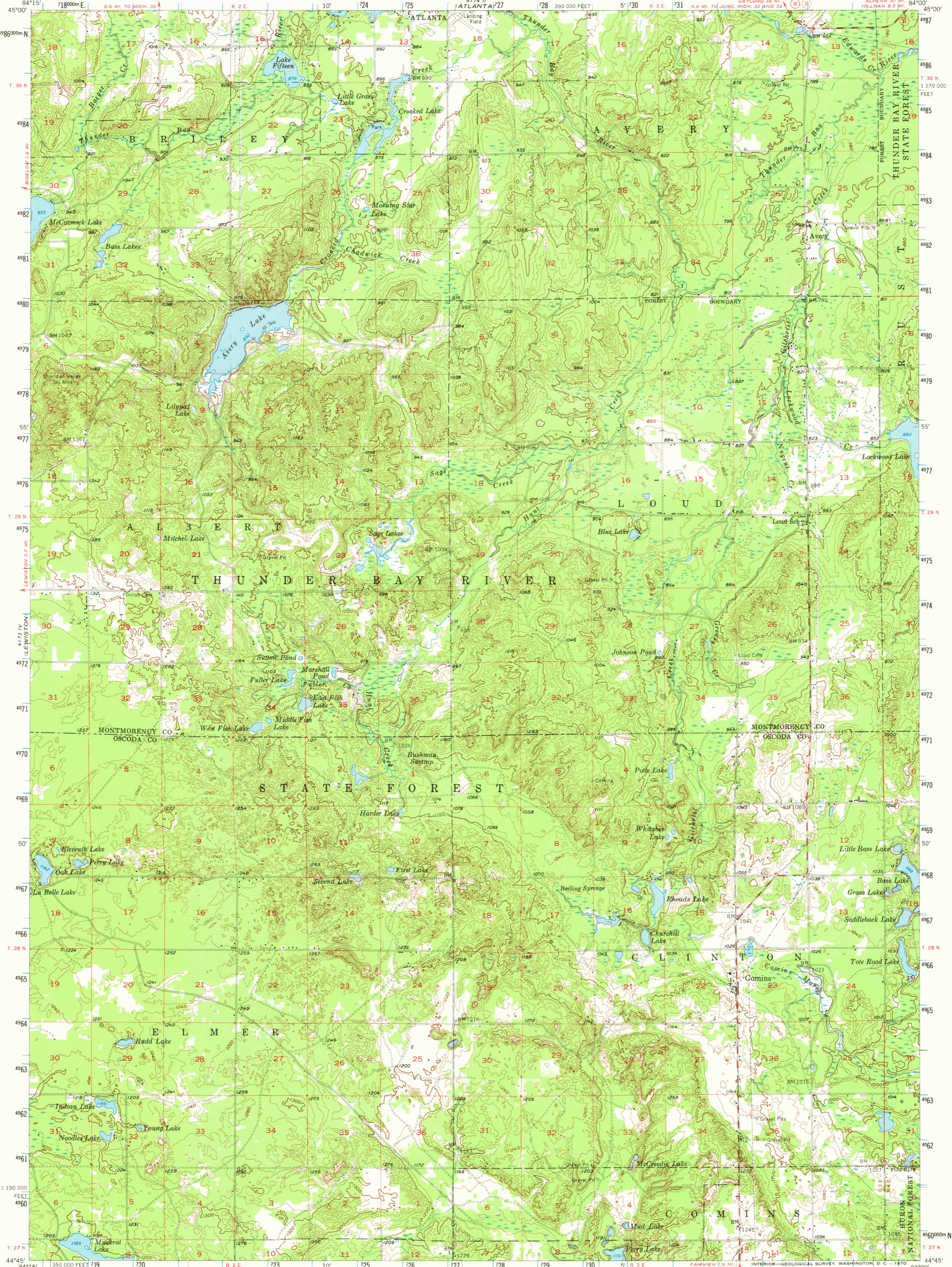
4173 III (METHERTON)

UNITED STATES  
DEPARTMENT OF THE INTERIOR  
GEOLOGICAL SURVEY

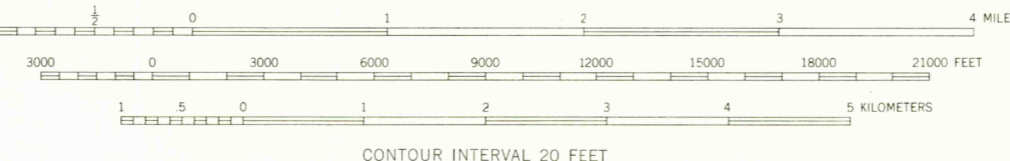
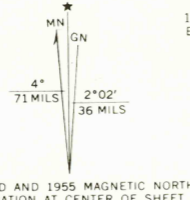
MICHIGAN  
STATE HIGHWAY DEPARTMENT  
CHARLES M. ZIEGLER  
STATE HIGHWAY COMMISSIONER

COMINS QUADRANGLE  
MICHIGAN  
15 MINUTE SERIES (TOPOGRAPHIC)

4173 III (HILLMAN)



Mapped, edited, and published by the Geological Survey  
Control by USGS and USC&GS  
Topography from aerial photographs by Kelsh plottor  
Aerial photographs taken 1952. Field check 1955  
Polyconic projection. 1927 North American datum  
10,000-foot grid based on Michigan coordinate system,  
east zone  
1000-meter Universal Transverse Mercator grid ticks,  
zone 16, shown in blue



CONTOUR INTERVAL 20 FEET  
DATUM IS MEAN SEA LEVEL



ROAD CLASSIFICATION

Heavy-duty	4 LANE 6 LANE	Light-duty
Medium-duty	2 LANE 4 LANE	Unimproved dirt
	U. S. Route	State Route

THIS MAP COMPLIES WITH NATIONAL MAP ACCURACY STANDARDS  
FOR SALE BY U. S. GEOLOGICAL SURVEY, WASHINGTON, D. C. 20242  
A FOLDER DESCRIBING TOPOGRAPHIC MAPS AND SYMBOLS IS AVAILABLE ON REQUEST

COMINS, MICH.  
N4445-W8400/15  
1955  
AMS 4173 I-SERIES V762