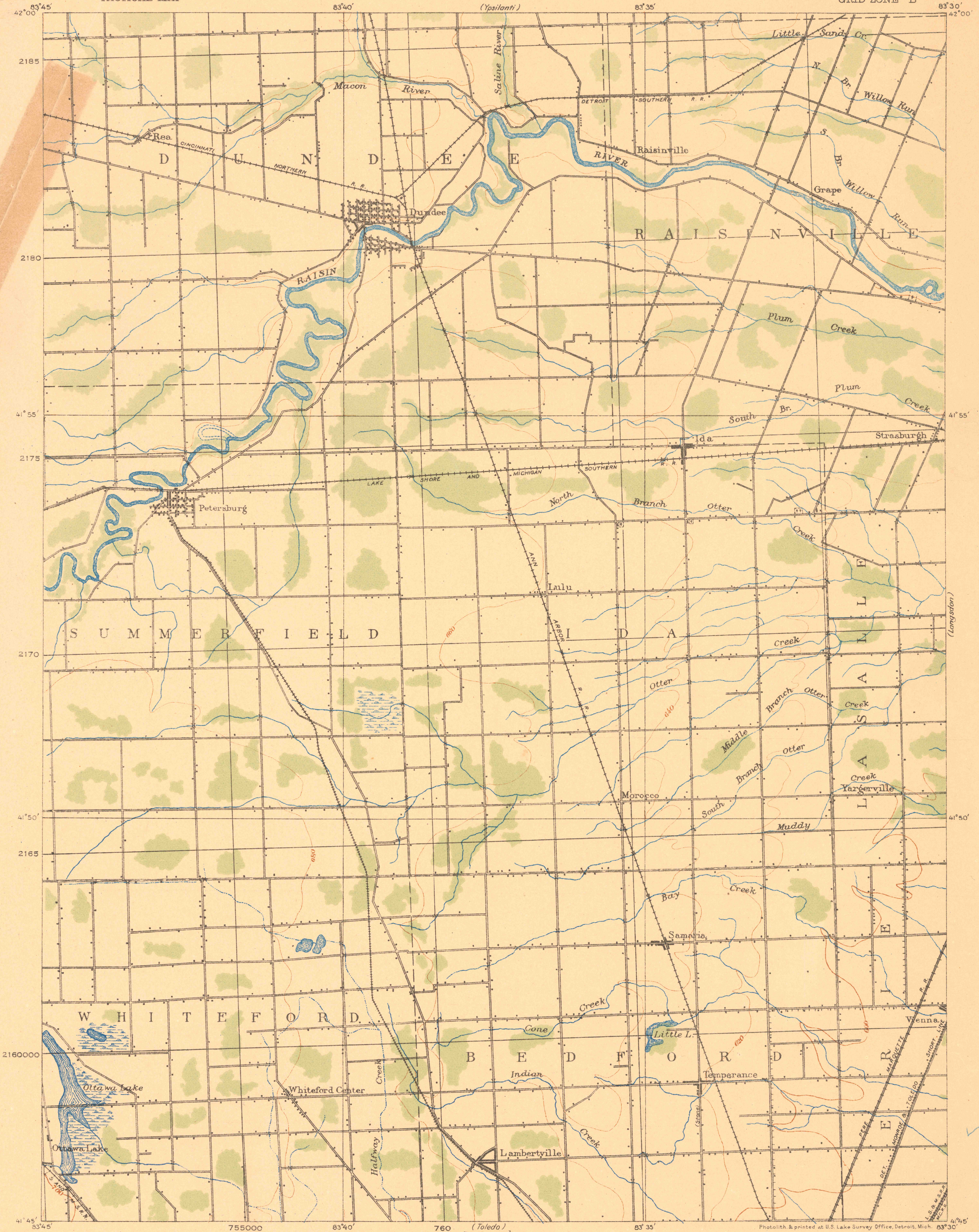


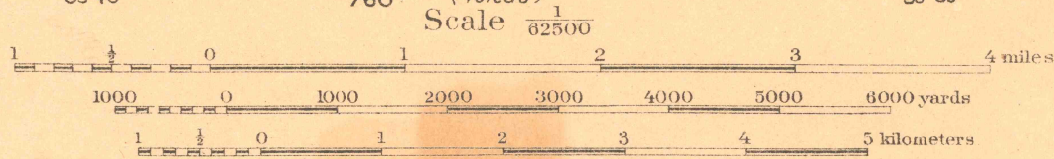
CONTROLLED
RECONNAISSANCE SHEET
748-N-I-E/2

CORPS OF ENGINEERS, U. S. ARMY
TACTICAL MAP

MICHIGAN
DUNDEE QUADRANGLE
GRID ZONE "B"



Geo. A. Zinn, Lieut. Col., Corps of Engineers,
Chief Engineer Officer, Central Division,
Wm. A. Beach, 2nd Lieut. 23rd Inf. authority for topography,
Surveyed 1912.

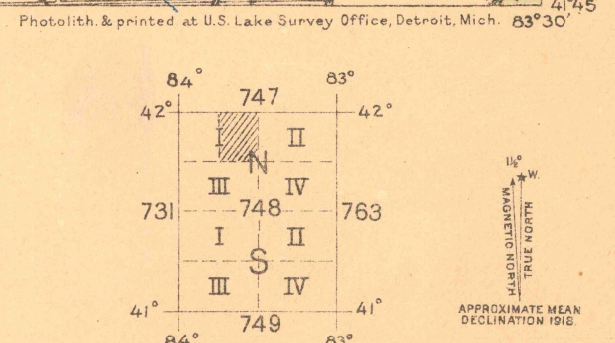


Contour Interval 20 feet

Datum is mean sea level

FIVE THOUSAND YARD GRID COMPUTED FROM "GRID SYSTEM FOR PROGRESSIVE MAPS
IN THE U. S." ZONE B. U. S. C. & G. S. SPECIAL PUBLICATION NO. 59
(THE LAST THREE DIGITS OF THE GRID NUMBERS ARE OMITTED)

NOTE: OFFICERS USING THIS MAP WILL MARK HEREON CORRECTIONS AND ADDITIONS WHICH COME
TO THEIR ATTENTION AND MAIL DIRECT TO "THE CHIEF OF ENGINEERS, WASHINGTON, D. C."



REPRINT BY ENGINEER REPRODUCTION PLANT, U. S. ARMY, WASHINGTON BARRACKS, D. C.
1926

FILE COPY
MAP INFORMATION OFFICE

DUNDEE
MICHIGAN