

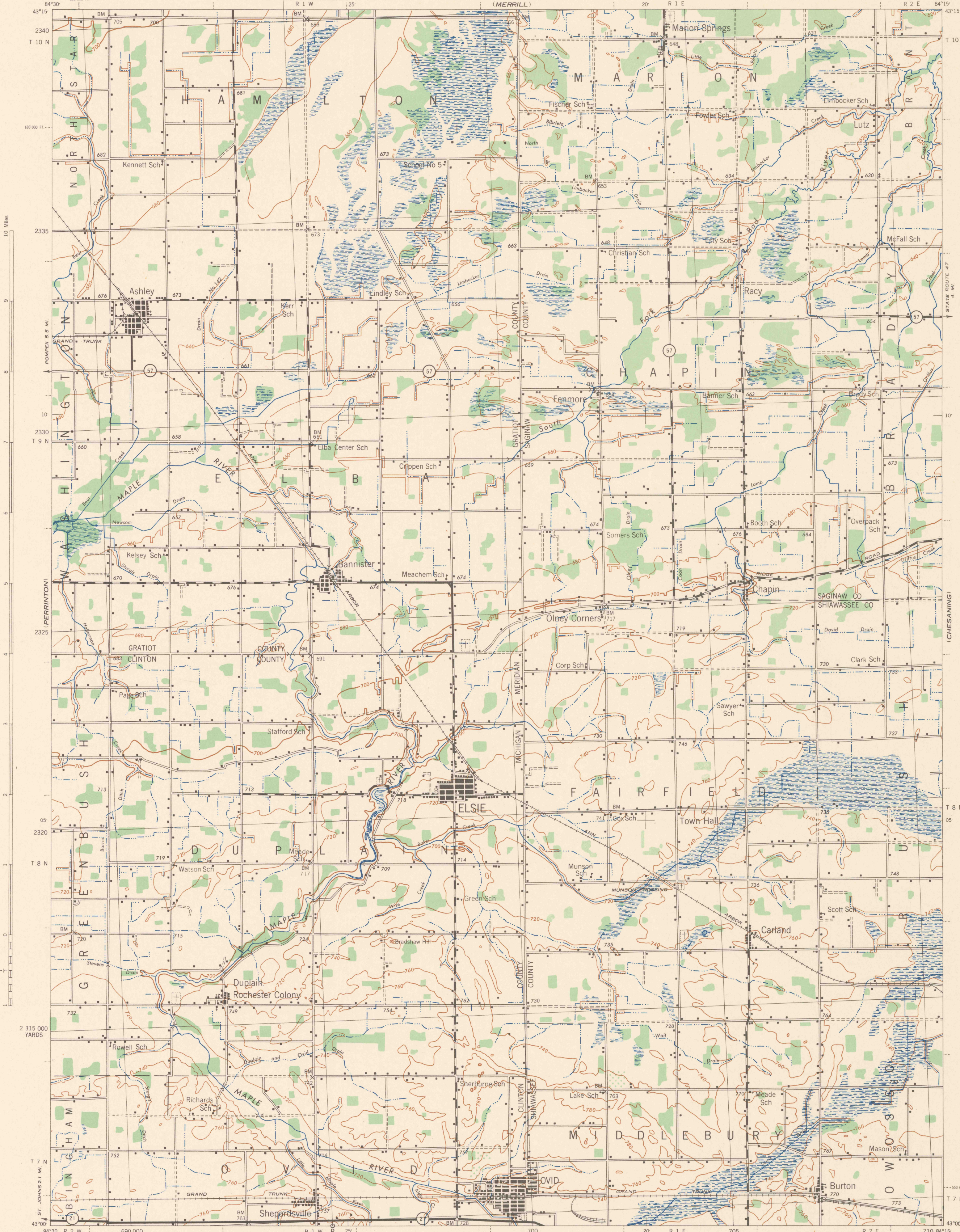
MICHIGAN 1:62,500

WAR DEPARTMENT  
CORPS OF ENGINEERS, U. S. ARMY

FIRST EDITION - AMS I

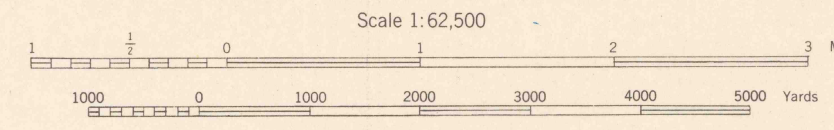
ELSIE QUADRANGLE  
15 MINUTE SERIES

(ST. CHARLES)



First Edition (AMS I), 1943.  
 Prepared under the direction of the Chief of Engineers, U. S. Army,  
 by Army Map Service (PT), U. S. Army, Washington, D. C., 1942.  
 Work Project Administration Project O. P. 162-2003.  
 Based on U.S.G.S. quadrangle, Elsie, 1:62,500 (1918).  
 Control by U.S. Geological Survey.  
 Surveyed in cooperation with the State of Michigan, 1922.  
 Reviewed from single lens vertical aerial photographs  
 Aerial Photography A. A. Department of Agriculture 1938.  
 Polyconic Projection, North American datum.

ROAD CLASSIFICATION 1943  
 Depictable hard surface, heavy duty road.  
 Depictable hard surface, light duty road.  
 Secondary, hard surface, all-weather road.  
 Dirt road.  
 U. S. Route 160  
 State Route 30  
 More than two lanes indicated by note along road with tick at point of change.



CONTOUR INTERVAL 20 FEET  
 DATUM IS MEAN SEA LEVEL  
 FIVE THOUSAND YARD GRID COMPUTED FROM GRID SYSTEM FOR PROGRESSIVE MAPS  
 IN THE U. S. ZONE U. S. C. & G. S. SPECIAL PUBLICATION NO. 89  
 THE LAST THREE DIGITS OF THE GRID NUMBERS ARE OMITTED  
 MICHIGAN STATE GRID ZONE EAST IS INDICATED BY DOTTED TICKS  
 OUTSIDE THE NEXT LINE AT 10,000 FOOT INTERVALS  
 NOTE OFFICERS USING THIS MAP WILL BE HELD RESPONSIBLE FOR ANY ERRORS WHICH COME  
 TO THEIR ATTENTION AND WILL BE REPORTED TO THE CHIEF OF ENGINEERS, WASHINGTON, D. C.

Use diagram only to obtain numerical values.  
 To determine magnetic north line, connect the  
 pivot point "P" on the south edge of the map  
 with the value of the angle between GRID  
 NORTH and MAGNETIC NORTH, as plotted on the  
 degree scale at the north edge of the map.

APPROXIMATE MEAN DECLINATION 1944  
 FOR CENTER OF SHEET  
 ANNUAL MAGNETIC CHANGE 1' DECREASE

ELSIE, MICHIGAN  
 N4300-W8415/15

(CORUNNA)