

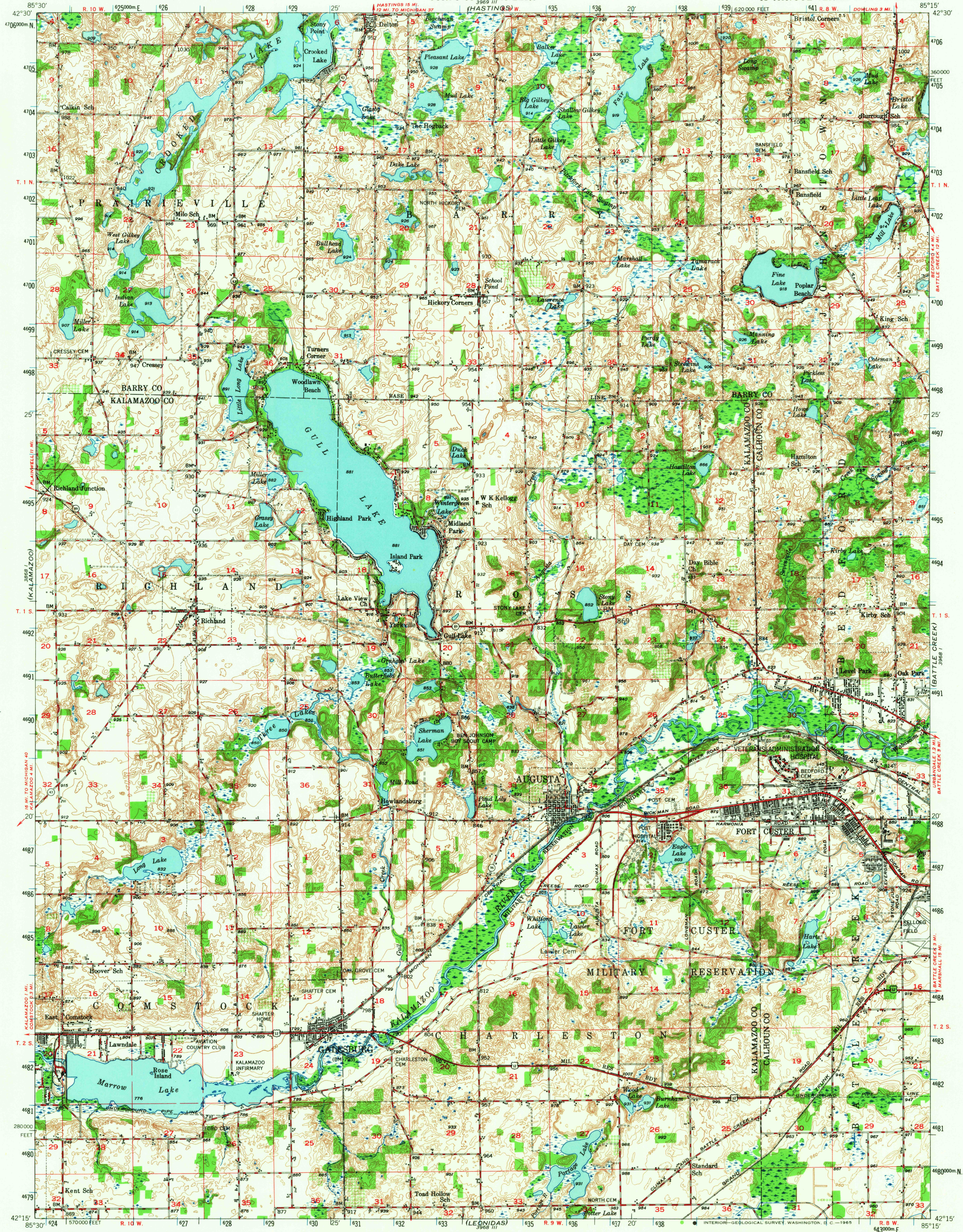
(WATLAND)

UNITED STATES  
DEPARTMENT OF THE INTERIOR  
GEOLOGICAL SURVEY

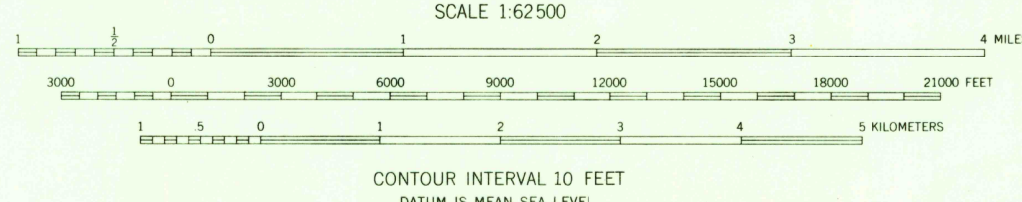
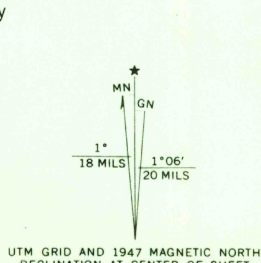
UNITED STATES  
DEPARTMENT OF THE ARMY  
CORPS OF ENGINEERS

GALESBURG QUADRANGLE  
MICHIGAN  
15 MINUTE SERIES (TOPOGRAPHIC)

(NASHVILLE)



Maped, edited, and published by the Geological Survey  
Control by USGS and USC&GS  
Culture and drainage from aerial photographs taken 1946  
Topography by plane-table methods 1947. Field check 1947  
Polyconic projection. 1927 North American datum  
10,000-foot grid based on Michigan coordinate system,  
central zone  
1000-meter Universal Transverse Mercator grid ticks,  
zone 16, shown in blue



USGS  
Historical File  
Topographic Division  
ROAD CLASSIFICATION  
ROAD-SURFACE ALL WEATHER ROADS DRY WEATHER ROADS  
Heavy-duty ———— LANE IS LANE Improved dirt ————  
Medium-duty ———— LANE IS LANE Unimproved dirt ————  
Loose-surface, graded, or narrow hard-surface ————  
○ U. S. Route ○ State Route

U.S.G.S.  
FILE COPY  
TOPOGRAPHIC DIVISION

GALESBURG, MICH.  
N4215-W8515/15  
1947  
AMS 3968 IV—SERIES V762

OCT 4 1965  
2840