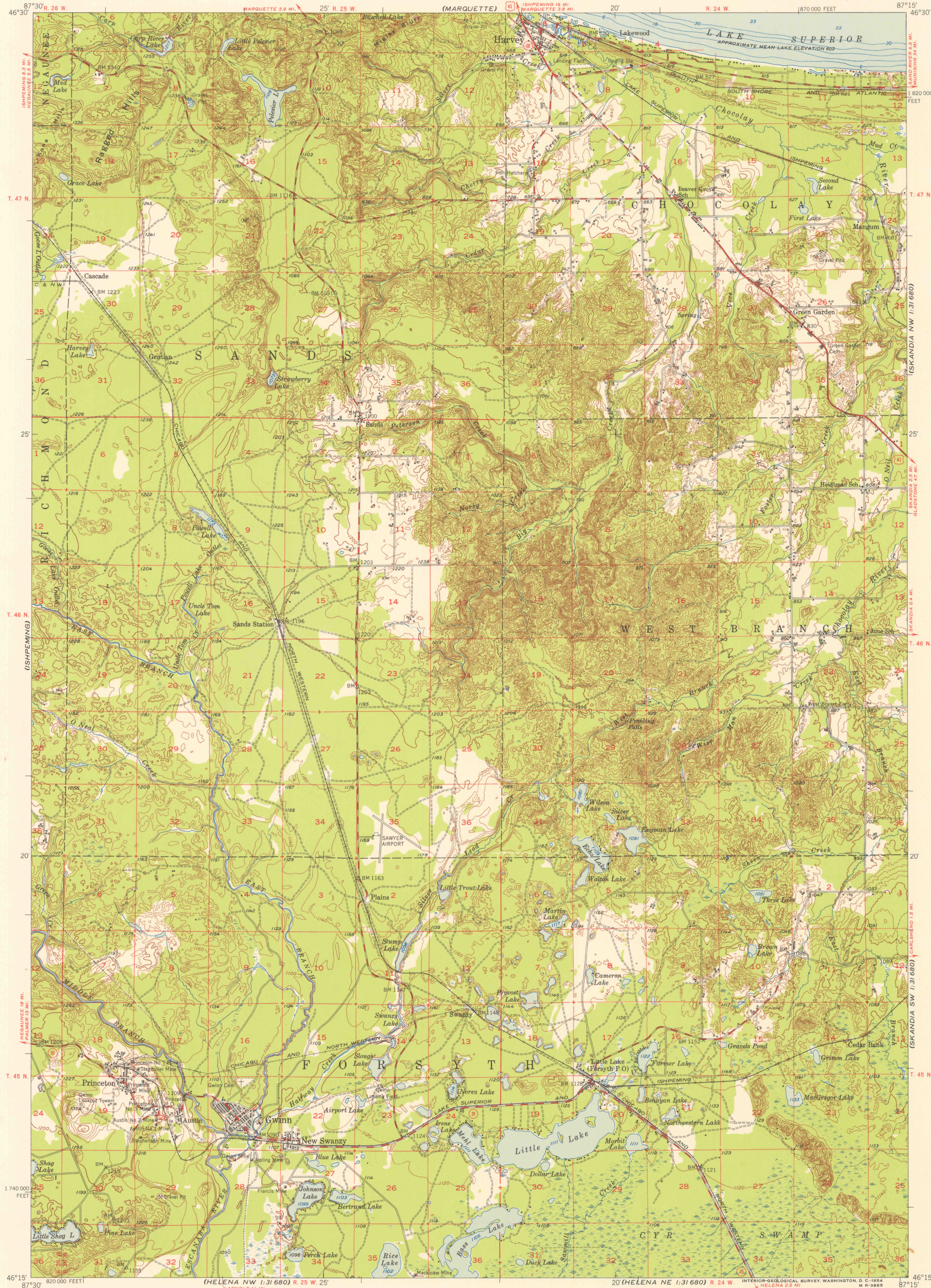


MARQUETTE CO AIRPORT

UNITED STATES DEPARTMENT OF THE INTERIOR GEOLOGICAL SURVEY

MICHIGAN STATE HIGHWAY DEPARTMENT CHARLES M. ZIEGLER STATE HIGHWAY COMMISSIONER (MARQUETTE)

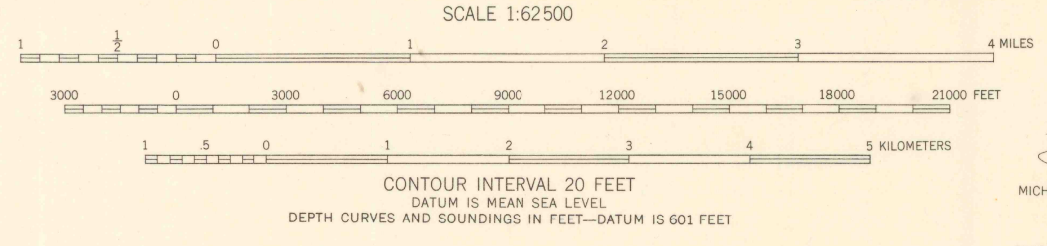
GWINN QUADRANGLE MICHIGAN-MARQUETTE CO. 15 MINUTE SERIES (TOPOGRAPHIC)



FILE COPY

FILE COPY

Mapped, edited, and published by the Geological Survey Control by USGS and USC&GS Topography from aerial photographs by Kelsh plotter Aerial photographs taken 1951. Field check 1952 Hydrography from U. S. Lake Survey Chart 93, (1:120,000) Polyconic projection. 1927 North American datum 10,000-foot grid based on Michigan coordinate system, west zone All mining features on this map are inactive



ROAD CLASSIFICATION Heavy-duty 4 LANE 16 LANE Light-duty Medium-duty 4 LANE 16 LANE Unimproved dirt U. S. Route State Route



USGS Historical File Topographic Division GWINN, MICH. N4615-W8715/15 1952

THIS MAP COMPLIES WITH NATIONAL MAP ACCURACY STANDARDS FOR SALE BY U. S. GEOLOGICAL SURVEY, WASHINGTON 25, D. C. A FOLDER DESCRIBING TOPOGRAPHIC MAPS AND SYMBOLS IS AVAILABLE ON REQUEST

MAY 24 1954

2620