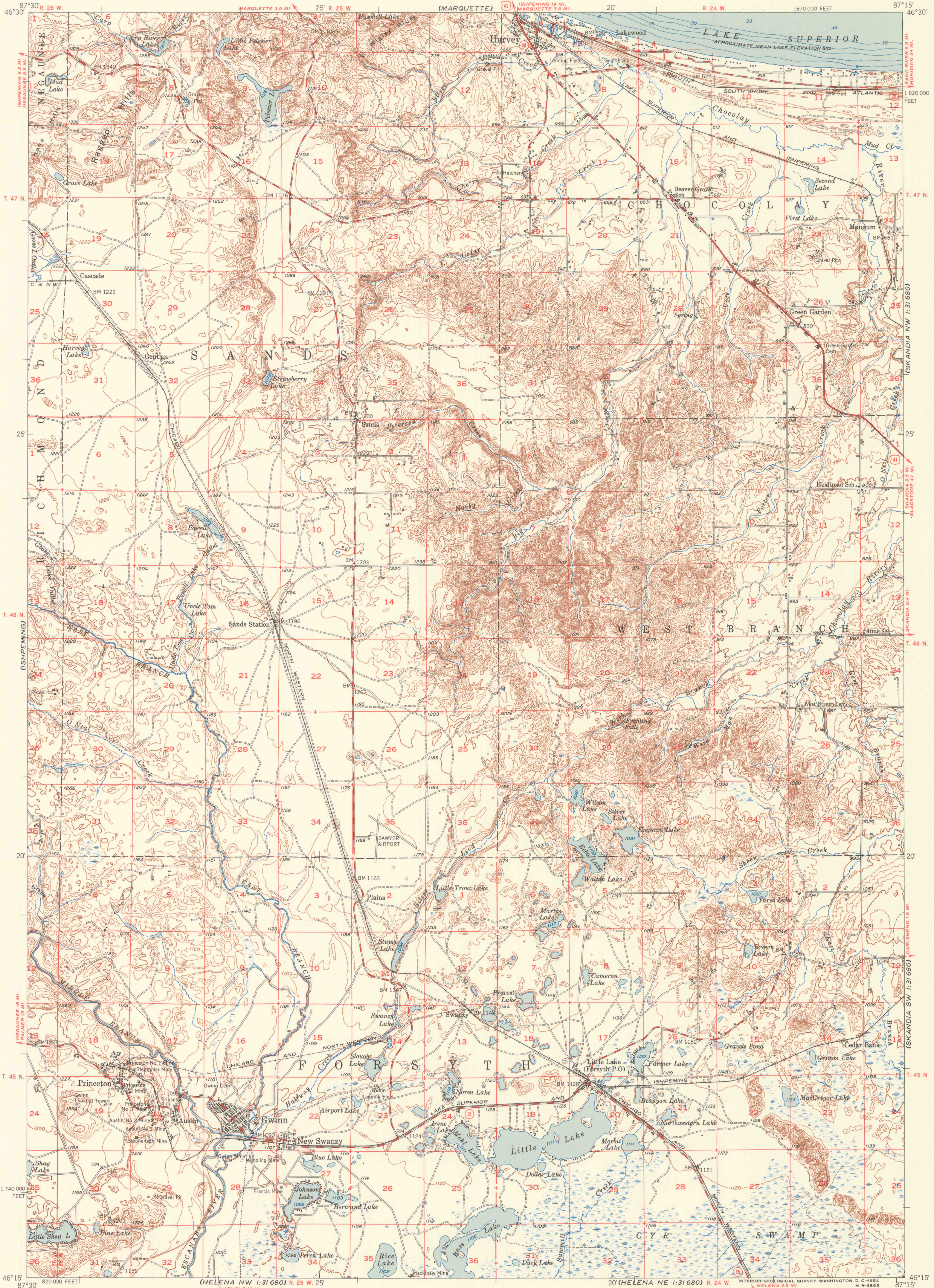


MARQUETTE CO. AIRPORT

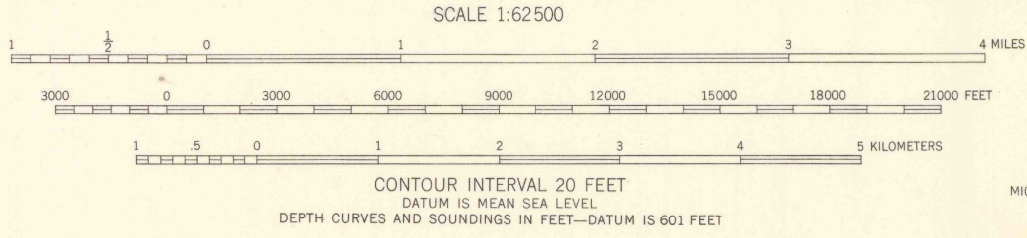
UNITED STATES DEPARTMENT OF THE INTERIOR GEOLOGICAL SURVEY

MICHIGAN STATE HIGHWAY DEPARTMENT CHARLES M. ZIEGLER STATE HIGHWAY COMMISSIONER (MARQUETTE)

GWINN QUADRANGLE MICHIGAN-MARQUETTE CO. 15 MINUTE SERIES (TOPOGRAPHIC)



Mapped, edited, and published by the Geological Survey Control by USGS and USC&GS Topography from aerial photographs by Kelsh plottor Aerial photographs taken 1951. Field check 1952 Hydrography from U. S. Lake Survey Chart 93, (1:120,000) Polyconic projection. 1927 North American datum 10,000-foot grid based on Michigan coordinate system, west zone All mining features on this map are inactive



ROAD CLASSIFICATION Heavy-duty 4 LANE IS LANE Light-duty Medium-duty 2 LANE IS LANE Unimproved dirt U. S. Route State Route

The west half of this area is also covered by 1:24,000 scale maps of the Sands and Gwinn 7.5 minute quadrangles, field check 1952 GWINN, MICH. N4615-W8715/15 1952

U. S. GEOLOGICAL SURVEY WASHINGTON, D. C. APR 23 1952 LIBRARY

APPROXIMATE MEAN DECLINATION, 1952

THIS MAP COMPLIES WITH NATIONAL MAP ACCURACY STANDARDS FOR SALE BY U. S. GEOLOGICAL SURVEY, WASHINGTON 25, D. C. A FOLDER DESCRIBING TOPOGRAPHIC MAPS AND SYMBOLS IS AVAILABLE ON REQUEST

