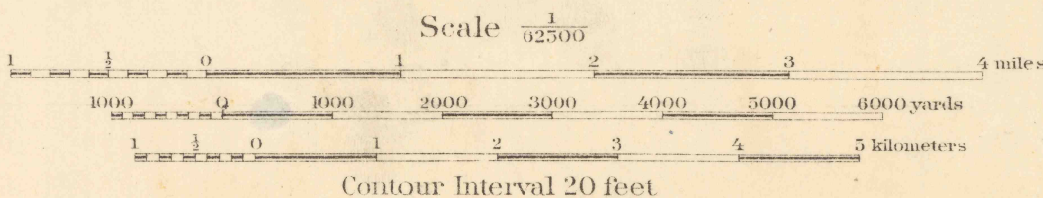
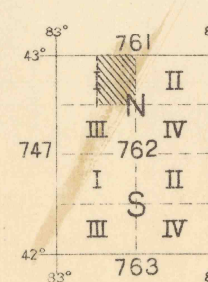


Survey and drafting under the direction of
Lieut. Col. George A. Zinn, Corps of Engineers, U.S. A.
Department Engineer, Central Department.
Field work by 2nd Lieut. B.K. Yount, 27th Infantry and
2nd Lieut. John F. Landis, 7th Infantry, in 1912.
G.A. Hussey, Jr. Eng. Draftsman
Map drawn in 1914.



NOTE: OFFICERS USING THIS MAP WILL MARK HEREON CORRECTIONS AND ADDITIONS WHICH COME TO THEIR ATTENTION AND MAIL DIRECT TO "THE CHIEF OF ENGINEERS, WASHINGTON, D.C."



Telegraph and Telephone Lines on
all Rail Roads and Main Roads.
Dimensions of Bridges shown as follows:
Length X Height above water.

