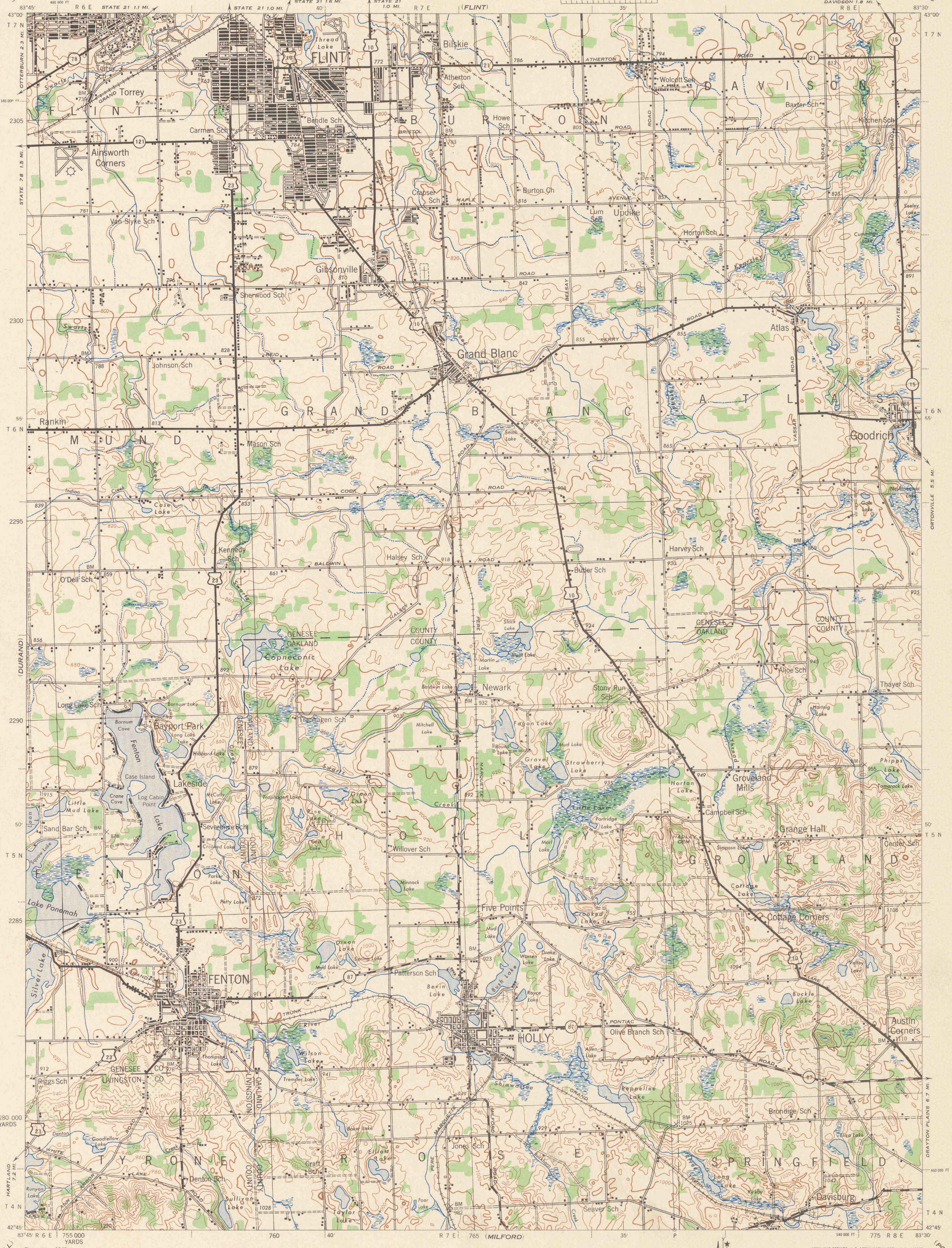


MICHIGAN 1:62,500

WAR DEPARTMENT
CORPS OF ENGINEERS, U. S. ARMY

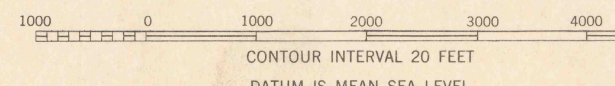
FIRST EDITION - AMS 1

HOLLY QUADRANGLE
15 MINUTE SERIES



First edition, 1943.
Prepared under the direction of the Chief of Engineers, U. S. Army, by the
Army Map Service, Pittsburgh and Kansas City units, 1942.
Based on U. S. G. S. quadrangle, Three Rivers, 1:62,500 (1916).
Control by U. S. Geological Survey.
Surveyed in cooperation with the State of Michigan, 1914.
Revised from single lens vertical aerial photographs.
Aerial photography - A. A. A. Department of Agriculture, 1941.
Polyconic Projection, North American Datum.

Scale 1:62,500



ROAD CLASSIFICATION 1940

Dependable hard surface: U.S. Route Loan-surface graded, dry weather road.

Secondary hard surface: State Route All-weather road.

More than two lanes indicated by note along road with tick at point of change.

APPROXIMATE MEAN DECLINATION 1943 FOR CENTER OF SHEET
ANNUAL MAGNETIC CHANGE 1 DEGREE
Use diagram only to obtain numerical values.
To determine magnetic north line, connect the pivot point "P" on the north edge of the map with the value of the angle between grid and magnetic north, as plotted on the degree scale of the north edge of the map.

HOLLY, MICHIGAN
N4245-W8330/15

FILE COPY
MAP INFORMATION OFFICE