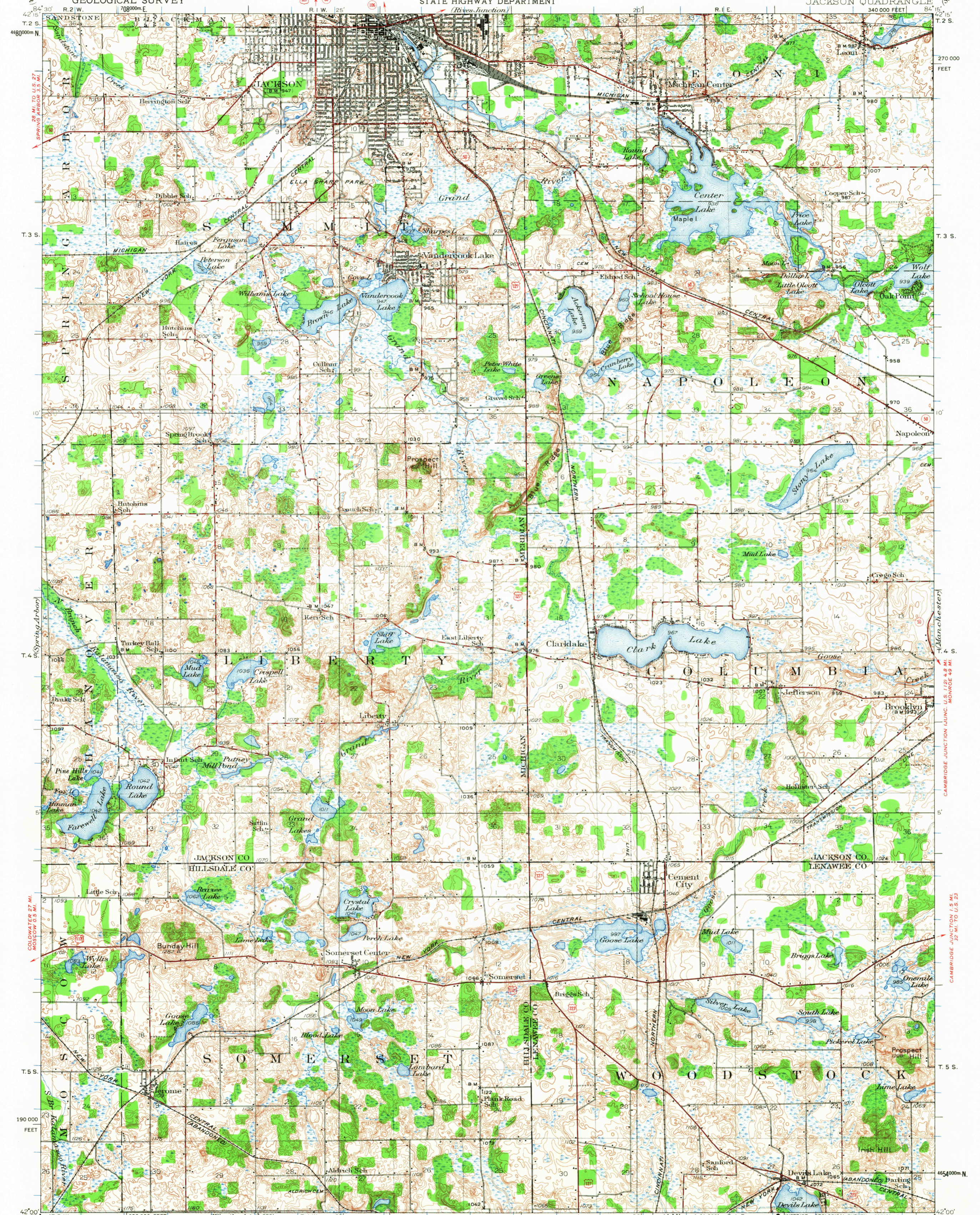


UNITED STATES
DEPARTMENT OF THE INTERIOR
GEOLOGICAL SURVEY

STATE OF MICHIGAN
REPRESENTED BY THE
STATE HIGHWAY DEPARTMENT

MICHIGAN
JACKSON QUADRANGLE

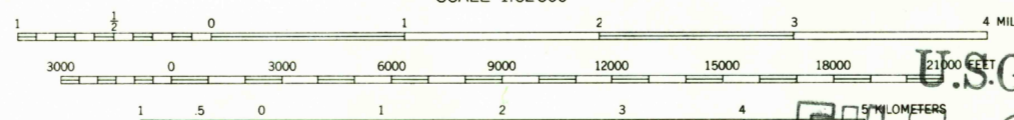


Topography by W.S. Gehres, F.L. Whaley, Kostka Mudd, A.W. Plushnick, E.J. Fennell, R.K. Kenerson, H.J. Owen, M.M. Stambaugh, LeGrand Smith, and R. Courtney Surveyed in 1930 and 1935

ROAD CLASSIFICATION

Heavy-duty	Light-duty
Medium-duty	Unimproved dirt
U.S. Route	State Route

APPROXIMATE MEAN DECLINATION, 1935



CONTOUR INTERVAL 10 FEET
DATUM IS MEAN SEA LEVEL

U.S.G.S.
FILE COPY
TOPOGRAPHIC DIVISION

USGS
Historical File
Topographic Division

JACKSON, MICH.
N4200-W841515

1935

FOR SALE BY U.S. GEOLOGICAL SURVEY, WASHINGTON, D. C. 20242
A FOLDER DESCRIBING TOPOGRAPHIC MAPS AND SYMBOLS IS AVAILABLE ON REQUEST

30 870

MAR 8 1968