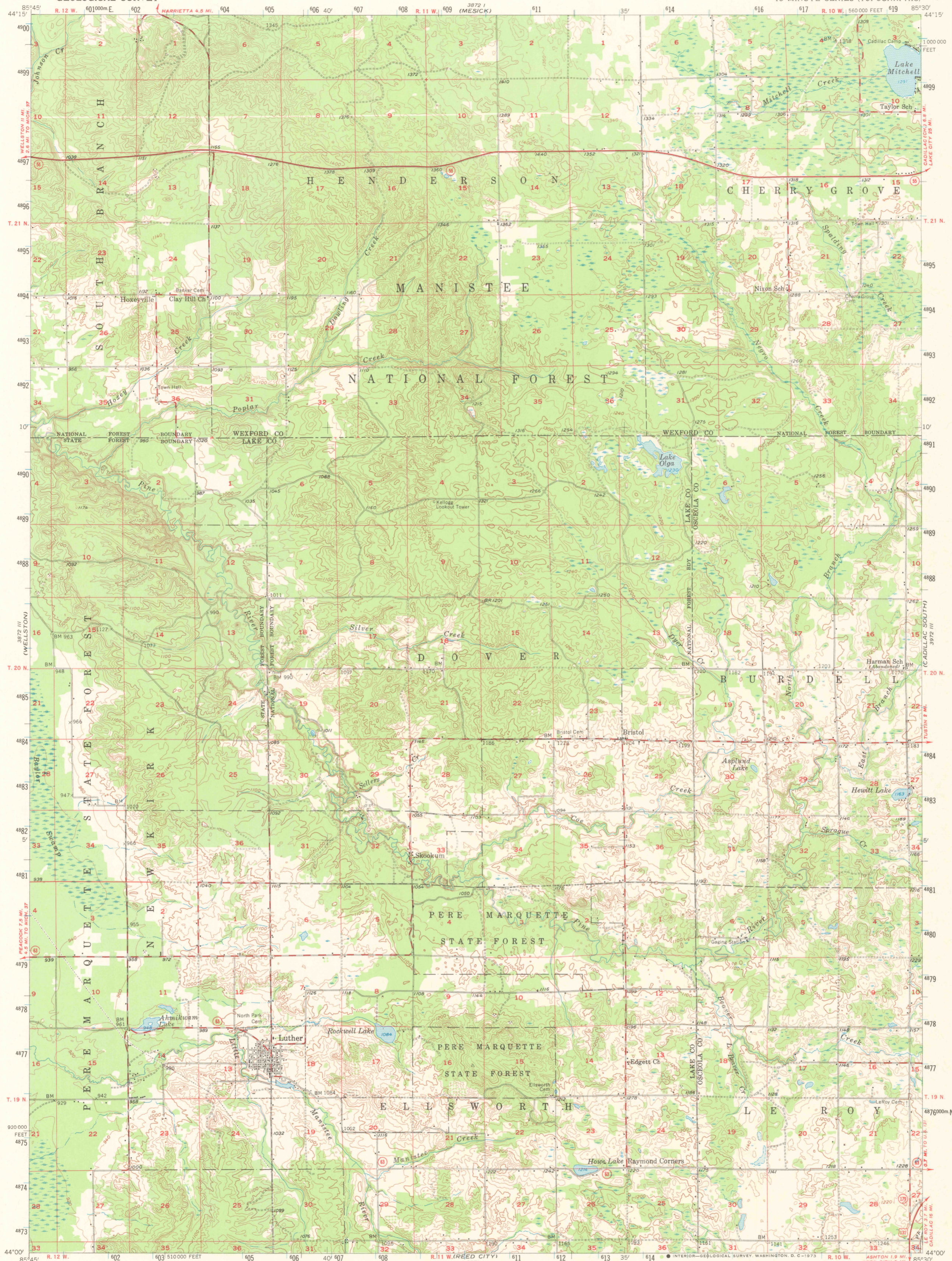


3972 IV  
(COPEMISH)

UNITED STATES  
DEPARTMENT OF THE INTERIOR  
GEOLOGICAL SURVEY

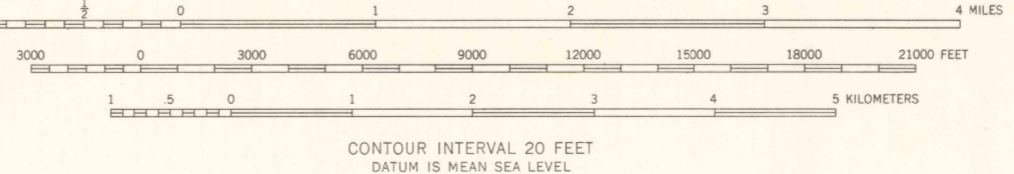
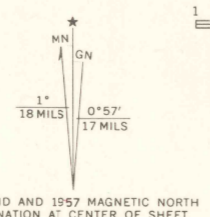
LUTHER QUADRANGLE  
MICHIGAN  
15 MINUTE SERIES (TOPOGRAPHIC)

3972 IV  
(CADILLAC NORTH)



(BALDWIN)  
3971 IV

Mapped, edited, and published by the Geological Survey  
Control by USGS and USC&GS  
Topography from aerial photographs by Kelsch plotter  
Aerial photographs taken 1954-1955. Field check 1957  
Polyconic projection. 1927 North American datum  
10,000-foot grid based on Michigan coordinate system, central zone  
1000-meter Universal Transverse Mercator grid ticks,  
zone 16, shown in blue



ROAD CLASSIFICATION

Heavy-duty	Light-duty
Medium-duty	Unimproved dirt
U.S. Route	State Route

LUTHER, MICH.  
N 4400 - W 8530/15  
1957  
AMS 3872 II--SERIES V762

THIS MAP COMPLIES WITH NATIONAL MAP ACCURACY STANDARDS  
FOR SALE BY U.S. GEOLOGICAL SURVEY, WASHINGTON, D. C. 20242  
A FOLDER DESCRIBING TOPOGRAPHIC MAPS AND SYMBOLS IS AVAILABLE ON REQUEST

MAY 16 1973

3570