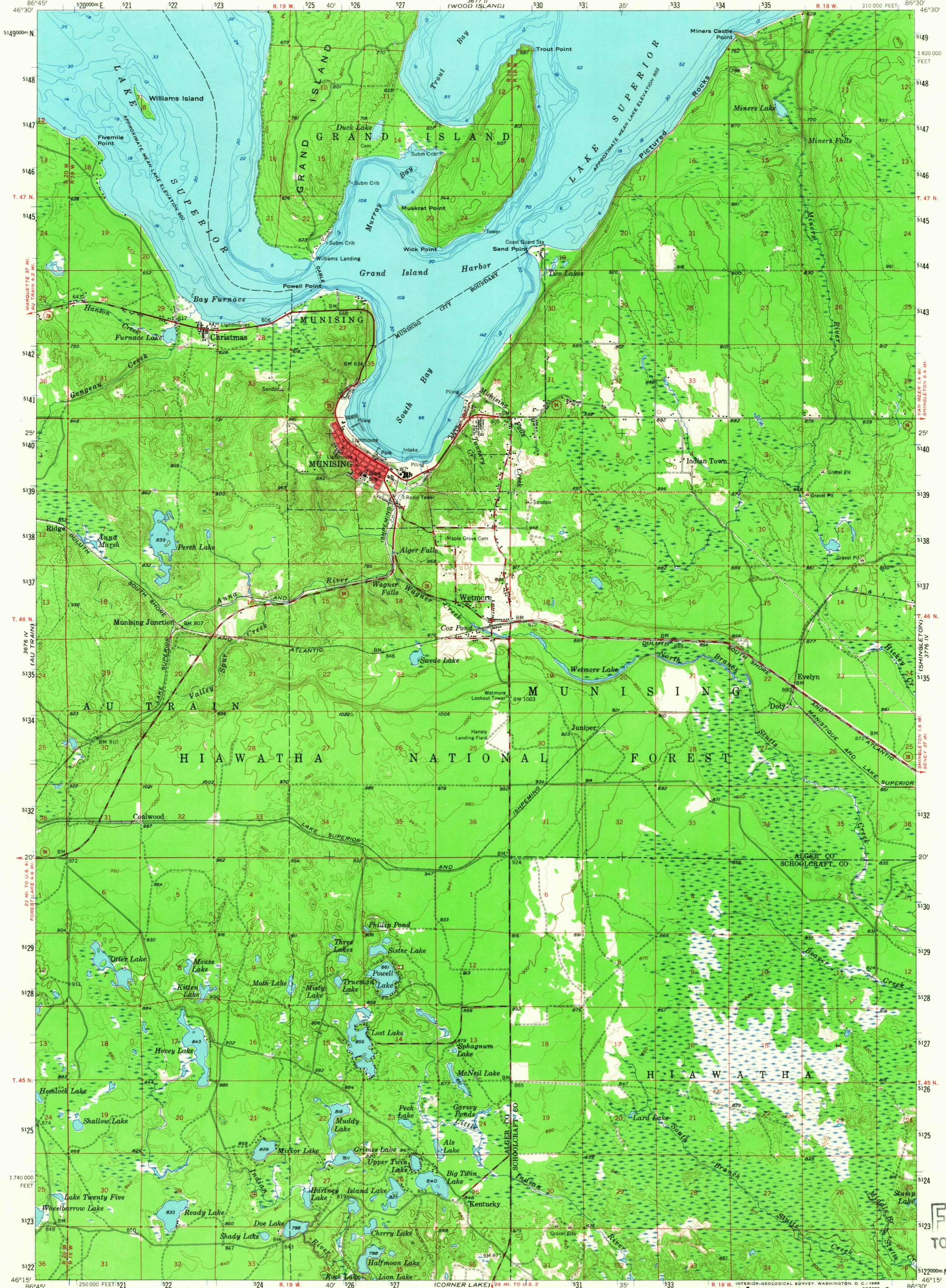
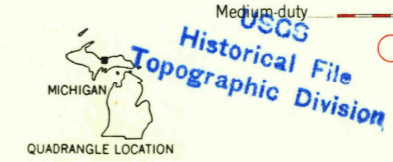
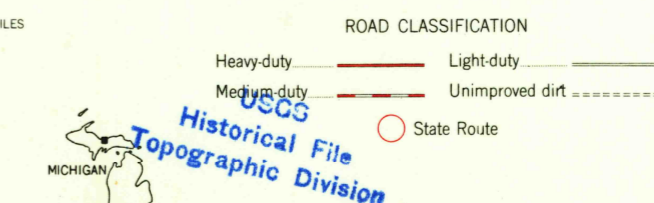
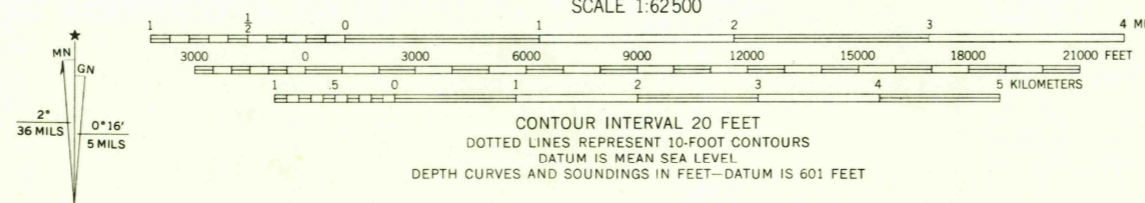


3777 III
(GRAND POINTAL
POINT)



Mapped, edited, and published by the Geological Survey
Control by USGS, USC&GS, and U.S. Lake Survey
Topography from aerial photographs by photogrammetric methods
Aerial photographs taken 1953. Field check 1958
Hydrography compiled from U.S. Lake Survey charts 93
and 931 (1955)
Polyconic projection. 1927 North American datum
10,000-foot grid based on Michigan coordinate system, central zone
1000-meter Universal Transverse Mercator grid ticks,
zone 16, shown in blue
Red tint indicates areas in which only
landmark buildings are shown



MUNISING, MICH.
N 4615-W863C/15
1958
AMS 3676 I SERIES V762

THIS MAP COMPLIES WITH NATIONAL MAP ACCURACY STANDARDS
FOR SALE BY U.S. GEOLOGICAL SURVEY, WASHINGTON, D.C. 20242
A FOLDER DESCRIBING TOPOGRAPHIC MAPS AND SYMBOLS IS AVAILABLE ON REQUEST

U.S.G.S.
FIVE COPY
TOPOGRAPHIC DIVISION

3020
OCT 5 1966