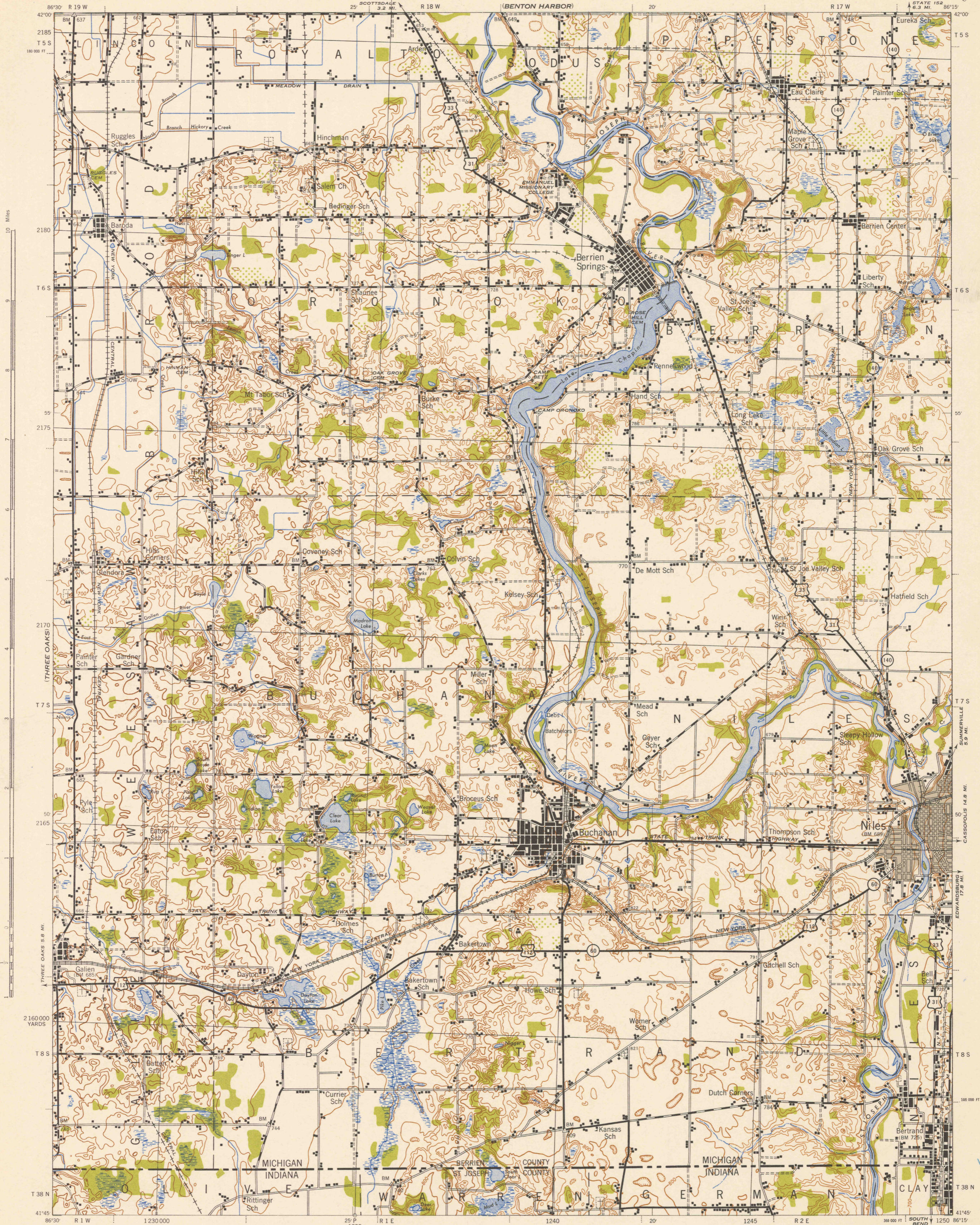


HARTFORD



First Edition 1943
 Prepared under the direction of the Chief of Engineers, U. S. Army, 1943.
 Army Map Service, Quincy unit.
 Based on U. S. G. S. quadrangle, Niles, 1:62,500 (1930).
 Control by U. S. Geological Survey
 Surveyed in cooperation with the State of Michigan, 1927
 Revised from single lens vertical aerial photographs
 Aerial photography - A. A. A. Department of Agriculture, 1938
 Polyconic Projection, North American Datum 1927.

ROAD CLASSIFICATION 1943

Dependable hard surface	Loose surface graded	U. S. Route
Heavy-duty road	dry weather road	State Route
Secondary hard surface	Dirt road	3 LANE 1 1/2 LANE
All weather road		

More than two lanes indicated by note along road with tick at point of change.

Scale 1:62,500

1000 0 1000 2000 3000 4000 5000 Yards

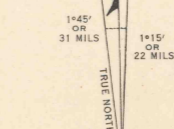
1 2 3 Miles

CONTOUR INTERVAL 20 FEET
 DATUM IS MEAN SEA LEVEL

FIVE THOUSAND YARD GRID COMPUTED FROM GRID SYSTEM FOR PROGRESSIVE MAPS
 IN THE U. S. ZONE B. U. S. G. S. SPECIAL PUBLICATION NO. 59

THE LAST THREE DIGITS OF THE GRID NUMBERS ARE OMITTED
 MICHIGAN STATE GRID ZONE CENTRAL IS INDICATED BY DOTTED TICKS
 OUTSIDE THE NEAT LINE AT 10,000 FOOT INTERVALS

NOTE: OFFICERS USING THIS MAP WILL MARK HEREON CORRECTIONS AND ADDITIONS WHICH COME
 TO THEIR ATTENTION AND WILL SEND TO THE CHIEF OF ENGINEERS, WASHINGTON, D. C.



APPROXIMATE MEAN DECLINATION 1943
 ANNUAL MAGNETIC CHANGE 1 INCREASE

NILES, MICH.-IND.
 N4145-W8615/15

FILE COPY
 MAP INFORMATION OFFICE

MICHIGAN