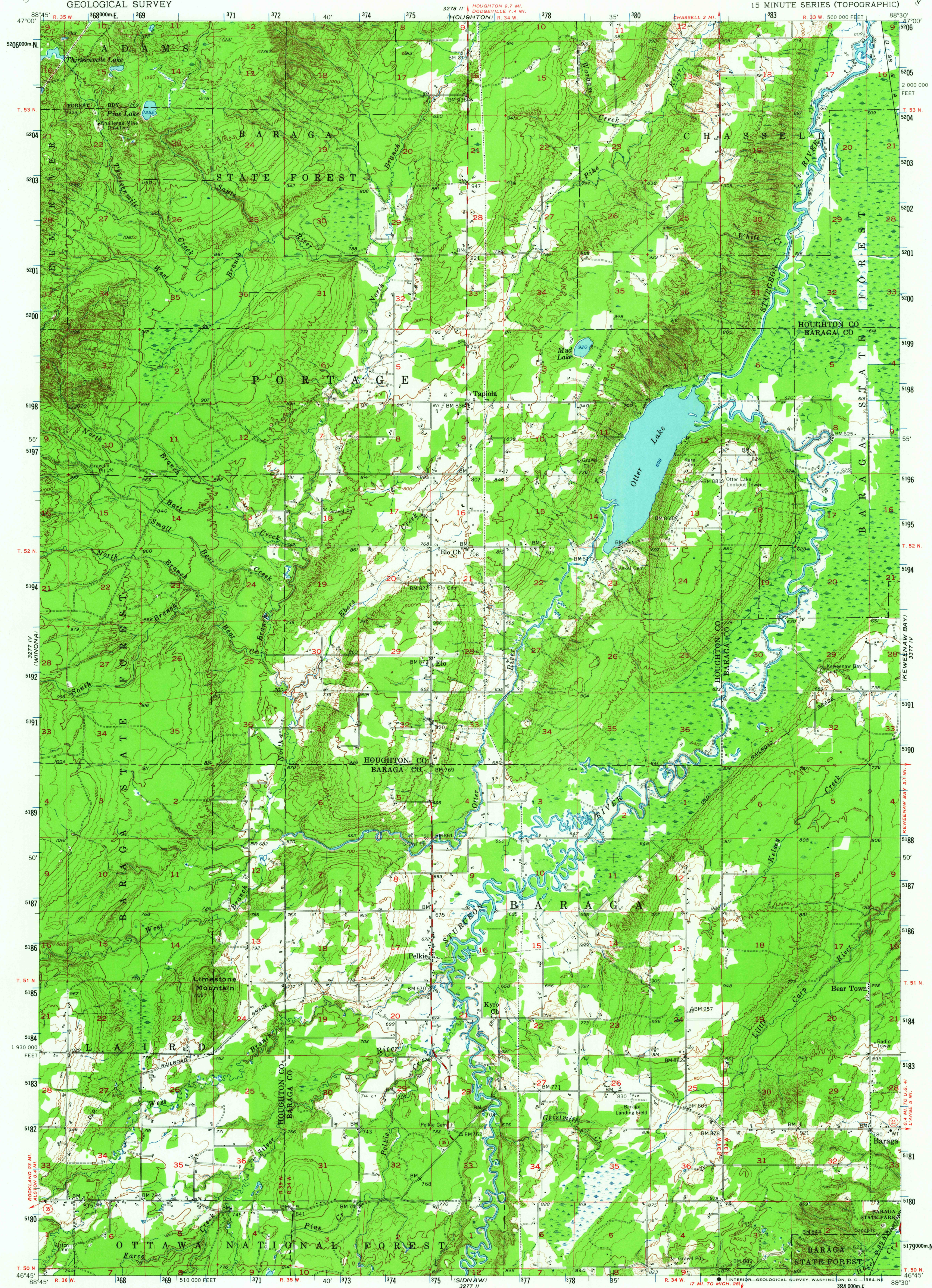
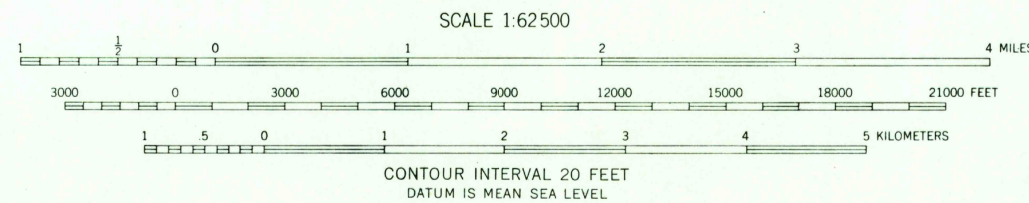


UNITED STATES  
DEPARTMENT OF THE INTERIOR  
GEOLOGICAL SURVEY

PELKIE QUADRANGLE  
MICHIGAN  
15 MINUTE SERIES (TOPOGRAPHIC)



Mapped, edited, and published by the Geological Survey  
Control by USGS and USC&GS  
Topography from aerial photographs by photogrammetric methods  
Aerial photographs taken 1951 and 1953. Field check 1954  
Polyconic projection. 1927 North American datum  
10,000-foot grid based on Michigan coordinate system,  
west zone  
1000-meter Universal Transverse Mercator grid ticks,  
zone 16, shown in blue



ROAD CLASSIFICATION  
Heavy duty ——— Light duty ———  
Medium duty - - - - - Unimproved dirt - - - - -  
U.S. Route (shield symbol) Slate Route (cross-ticks symbol)

USGS  
Historical File  
Topographic Division

PELKIE, MICH.  
N4645-W8830/15  
1954  
AMS 3277 I-SERIES V762



USGS Library  
Reston, VA.  
Topo Archive

THIS MAP COMPLIES WITH NATIONAL MAP ACCURACY STANDARDS  
FOR SALE BY U. S. GEOLOGICAL SURVEY, WASHINGTON 25, D. C.  
A FOLDER DESCRIBING TOPOGRAPHIC MAPS AND SYMBOLS IS AVAILABLE ON REQUEST